



# SADDLERS REACH

Chichester



[countrysidehomes.com](http://countrysidehomes.com)



**COUNTRYSIDE**  
Homes

# SADDLERS REACH

Chichester



**1 & 2 bedroom apartments**

The Houghton & Quainton

**2 bedroom homes**

The Badminton

The Crofton

**3 bedroom homes**

The Hickstead

The Richmond

The Rutland

The Stoneleigh

**4 bedroom homes**

The Westerfield

The Parwood

cs cycle store

bs bike store

ss substation

bcp bin collection point

**Pre-sold homes**

1 and 2 bedroom apartments

2 bedroom homes

3 bedroom homes







# THE RUTLAND

3 bedroom home



**COUNTRYSIDE**  
Homes

[countrysidehomes.com](http://countrysidehomes.com)

# THE RUTLAND

3 bedroom home



GROUND FLOOR	metres	feet / inches
Kitchen / dining	5.00 x 3.40	16' 5" x 11' 2"
Sitting room	4.80 x 2.80	15' 9" x 9' 2"

## FIRST FLOOR

Bedroom 1	4.60 x 2.80	15' 1" x 9' 2"
Bedroom 2	2.80 x 2.70	8' 10" x 9' 2"
Bedroom 3	3.40 x 2.10	11' 2" x 6' 11"

ovn                      oven    cup'd                      cupboard  
h                          hob    ◀ ▶                      measuring points

### The Rutland | Saddlers Reach |

The floorplan has been produced for illustrative purposes only. Room sizes shown are between arrow points as indicated on plan. The dimensions have tolerances of + or -50mm and should not be used other than for general guidance. If specific dimensions are required, enquiries should be made to the sales consultant. The floor plans shown are not to scale. Measurements are based on the original drawings. Slight variations may occur during construction.

The illustrations shown are computer generated impressions of how the property may look and are indicative only.

External details or finishes may vary on individual plots and homes may be built in either detached or attached styles depending on the development layout. Exact specifications, window styles and whether a property is left or right-handed may differ from plot to plot. Please speak to our sales consultant for specific plot details.

- ① Garage applies to selected plots only. Please speak to our sales consultant for further details.

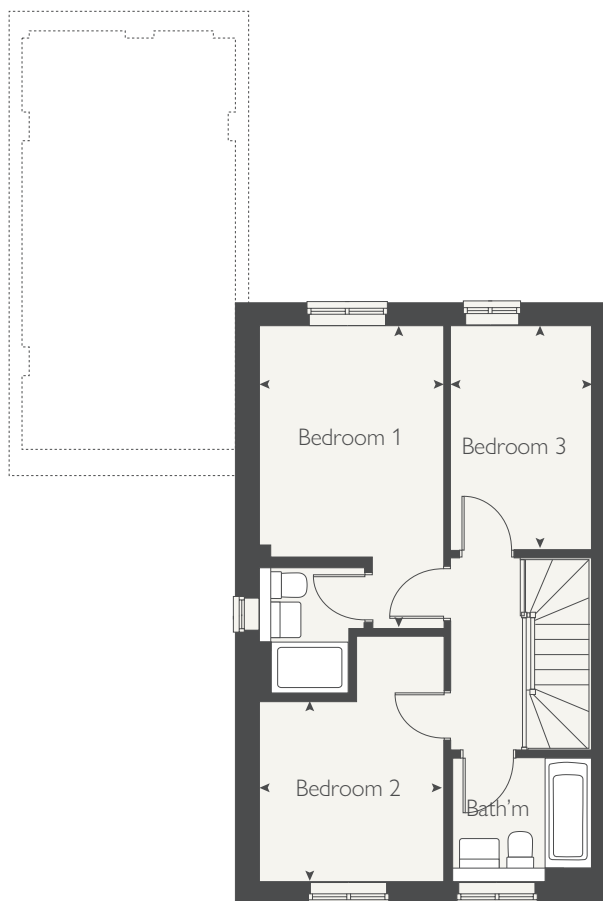
Produced by the Vistry Group Design Studio.

SC09A DS10439 / 07.24

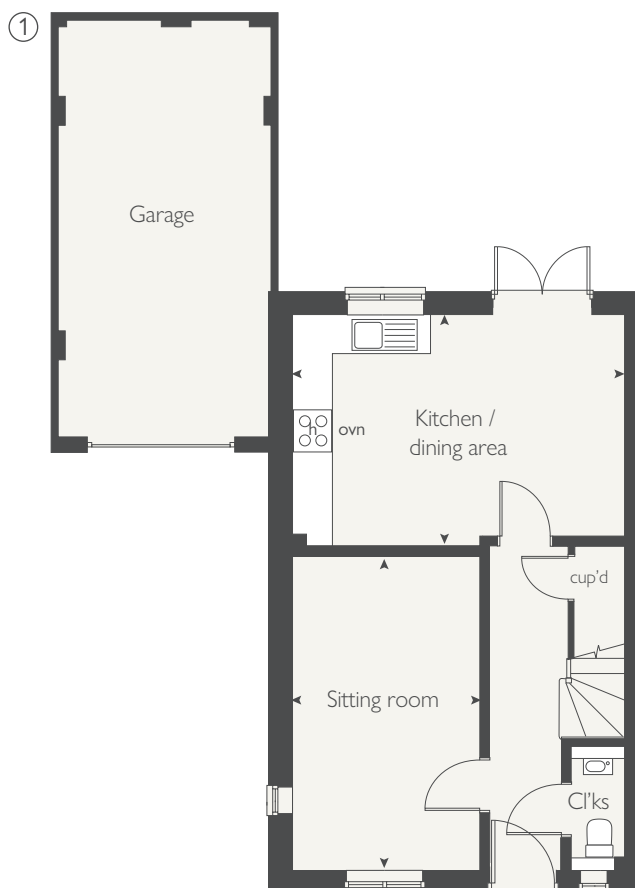


**COUNTRYSIDE**  
Homes

## FIRST FLOOR



## GROUND FLOOR







# THE BADMINTON

2 bedroom home



**COUNTRYSIDE**  
Homes

# THE BADMINTON

2 bedroom home



GROUND FLOOR	metres	feet / inches
Kitchen	3.50 x 2.50	11' 6" x 8' 2"
Sitting / dining area	4.40 x 4.10	14' 5" x 13' 5"

## FIRST FLOOR

Bedroom 1	4.10 x 3.40	13' 5" x 11' 2"
Bedroom 2	4.10 x 3.50	13' 5" x 11' 6"

ovn	oven	cup'd	cupboard
h	hob	◀ ▶	measuring points

### The Badminton | Saddlers Reach |

The floorplan has been produced for illustrative purposes only. Room sizes shown are between arrow points as indicated on plan. The dimensions have tolerances of + or -50mm and should not be used other than for general guidance. If specific dimensions are required, enquiries should be made to the sales consultant. The floor plans shown are not to scale. Measurements are based on the original drawings. Slight variations may occur during construction.

The illustrations shown are computer generated impressions of how the property may look and are indicative only.

External details or finishes may vary on individual plots and homes may be built in either detached or attached styles depending on the development layout. Exact specifications, window styles and whether a property is left or right-handed may differ from plot to plot. Please speak to our sales consultant for specific plot details.

\* Windows apply to selected plots only  
Please speak to our sales consultant for further details.

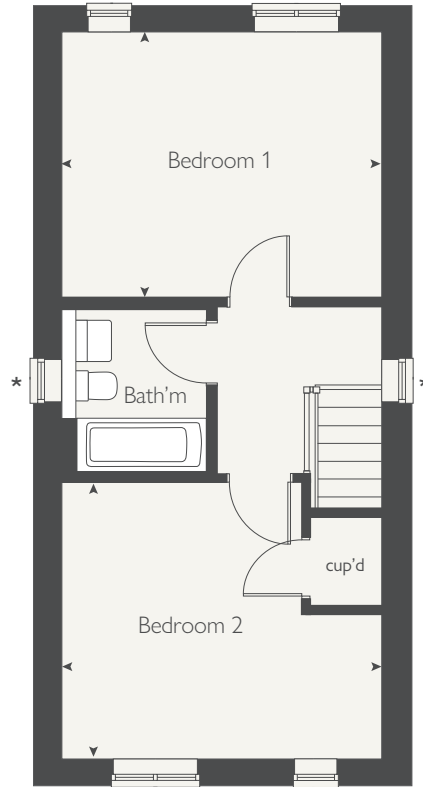
Produced by the Vistry Group Design Studio.

SC09A DS10439 / 06.24

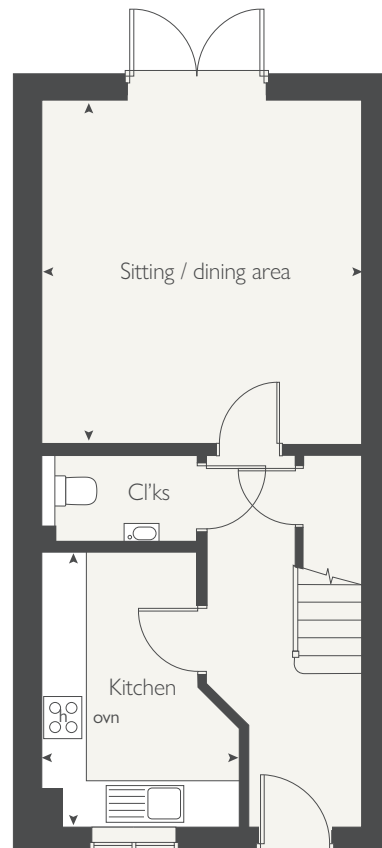


**COUNTRYSIDE**  
Homes

## FIRST FLOOR



## GROUND FLOOR







# THE HICKSTEAD

3 bedroom home



**COUNTRYSIDE**  
Homes

[countrysidehomes.com](http://countrysidehomes.com)

# THE HICKSTEAD

3 bedroom home



GROUND FLOOR	metres	feet / inches
Kitchen / dining	5.40 x 3.30	17' 9" x 10' 10"
Sitting room	4.20 x 3.20	13' 9" x 10' 6"

## FIRST FLOOR

Bedroom 1	4.30 x 4.30	14' 1" x 14' 1"
Bedroom 2	3.10 x 3.10	10' 10" x 10' 2"
Bedroom 3	3.30 x 2.10	10' 10" x 6' 11"

ovn	oven	cup'd	cupboard
h	hob	◀ ▶	measuring points

### The Hickstead | Saddlers Reach |

The floorplan has been produced for illustrative purposes only. Room sizes shown are between arrow points as indicated on plan. The dimensions have tolerances of + or -50mm and should not be used other than for general guidance. If specific dimensions are required, enquiries should be made to the sales consultant. The floor plans shown are not to scale. Measurements are based on the original drawings. Slight variations may occur during construction.

The illustrations shown are computer generated impressions of how the property may look and are indicative only. External details or finishes may vary on individual plots and homes may be built in either detached or attached styles depending on the development layout. Exact specifications, window styles and whether a property is left or right-handed may differ from plot to plot. Please speak to our sales consultant for specific plot details.

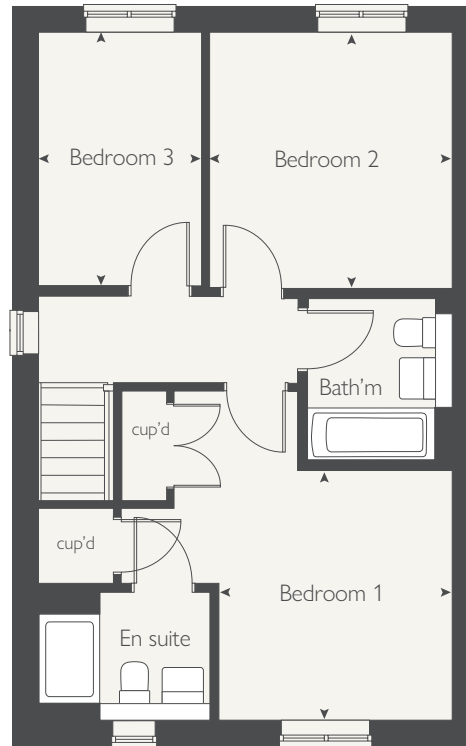
Produced by the Vistry Group Design Studio.

SC09A DS10439 / 06.24

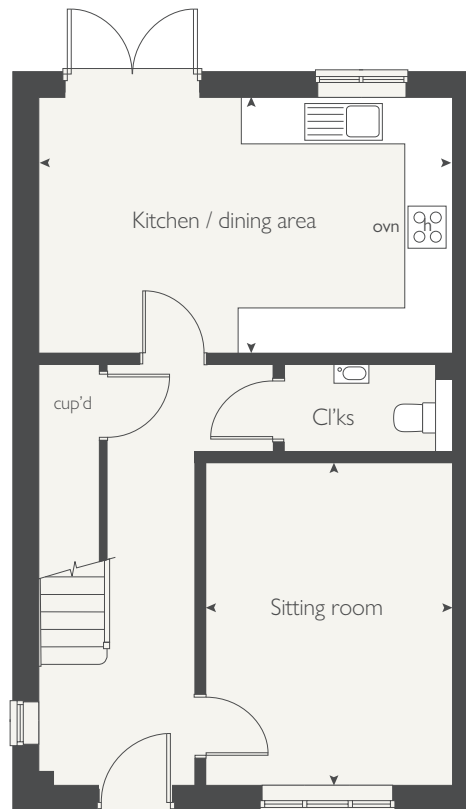


**COUNTRYSIDE**  
Homes

## FIRST FLOOR



## GROUND FLOOR







# THE PARWOOD

4 bedroom home



**COUNTRYSIDE**  
Homes

[countrysidehomes.com](http://countrysidehomes.com)

# THE PARWOOD

4 bedroom home



GROUND FLOOR	metres	feet / inches
Kitchen / dining	6.70 x 2.70	22' 0" x 8' 10"
Sitting room	4.70 x 3.30	15' 5" x 10' 10"
Study	3.30 x 1.80	10' 10" x 5' 11"

## FIRST FLOOR

Bedroom 1	4.30 x 3.40	14' 1" x 11' 2"
Bedroom 2	3.50 x 3.10	11' 6" x 10' 2"
Bedroom 3	3.40 x 2.70	11' 2" x 8' 10"
Bedroom 4	3.10 x 2.20	10' 2" x 7' 3"

ovn                      oven    cup'd                      cupboard  
h                          hob    ◀ ▶                      measuring points

### The Parwood | Saddlers Reach |

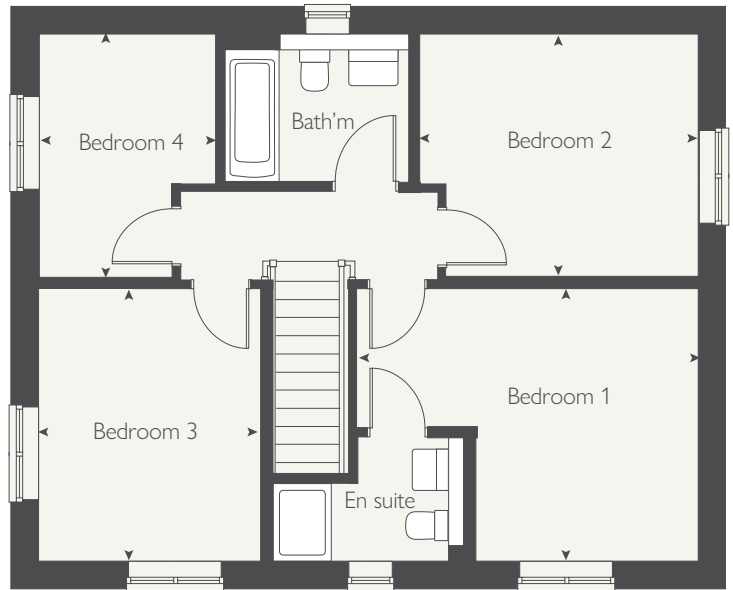
The floorplan has been produced for illustrative purposes only. Room sizes shown are between arrow points as indicated on plan. The dimensions have tolerances of + or -50mm and should not be used other than for general guidance. If specific dimensions are required, enquiries should be made to the sales consultant. The floor plans shown are not to scale. Measurements are based on the original drawings. Slight variations may occur during construction.

The illustrations shown are computer generated impressions of how the property may look and are indicative only. External details or finishes may vary on individual plots and homes may be built in either detached or attached styles depending on the development layout. Exact specifications, window styles and whether a property is left or right-handed may differ from plot to plot. Please speak to our sales consultant for specific plot details.

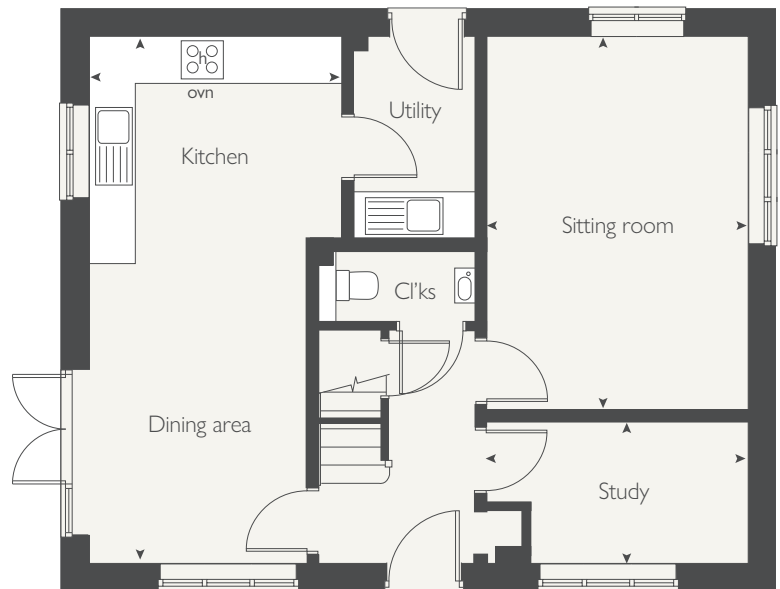
Produced by the Vistry Group Design Studio.

SC09A DS10439 / 06.24

## FIRST FLOOR



## GROUND FLOOR



**COUNTRYSIDE**  
Homes





THE RICHMOND  
3 bedroom home



COUNTRYSIDE  
Homes

[countrysidehomes.com](http://countrysidehomes.com)

# THE RICHMOND

3 bedroom home



GROUND FLOOR	metres	feet / inches
Kitchen	3.13 x 2.68	10' 2" x 8' 9"
Dining area	3.14 x 2.40	10' 3" x 7' 8"
Sitting room	5.53 x 3.32	18' 1" x 10' 10"

## FIRST FLOOR

Bedroom 1	3.38 x 3.33	11' 1" x 10' 11"
Bedroom 2	3.60 x 3.18	11' 10" x 10' 5"
Bedroom 3	2.73 x 2.24	8' 9" x 7' 4"

ovn	oven	ffzs	fridge freezer space
h	hob	cup'd	cupboard
ds	dishwasher space	< >	measuring points
ws	washing machine space		

### The Richmond | <HTP code> <Region> |

The floorplan has been produced for illustrative purposes only. Room sizes shown are between arrow points as indicated on plan. The dimensions have tolerances of + or -50mm and should not be used other than for general guidance. If specific dimensions are required, enquiries should be made to the sales consultant. The floor plans shown are not to scale. Measurements are based on the original drawings. Slight variations may occur during construction.

The illustrations shown are computer generated impressions of how the property may look and are indicative only. External details or finishes may vary on individual plots and homes may be built in either detached or attached styles depending on the development layout. Exact specifications, window styles and whether a property is left or right-handed may differ from plot to plot. Please speak to our sales consultant for specific plot details.

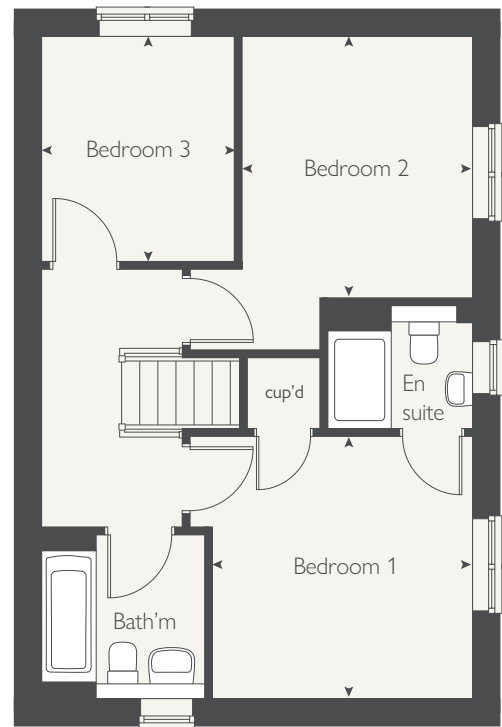
Produced by the Vistry Group Design Studio.

SC09A DS10439 / 06.24

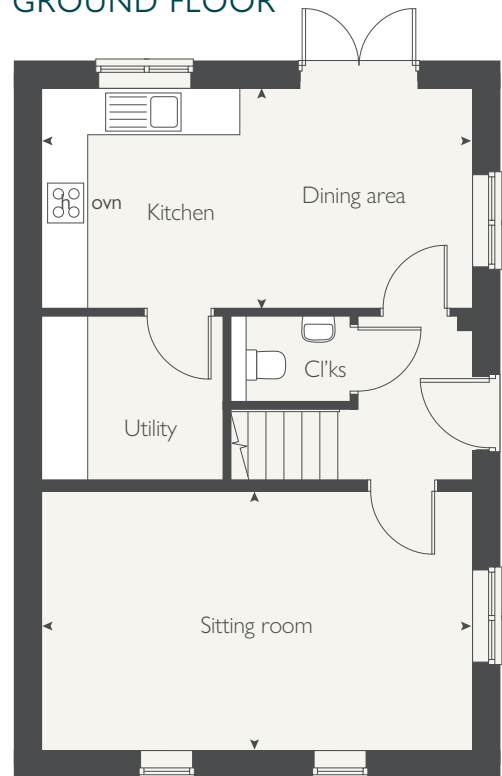


**COUNTRYSIDE**  
Homes

## FIRST FLOOR



## GROUND FLOOR







# THE WESTERFIELD

4 bedroom home



**COUNTRYSIDE**  
Homes

# THE WESTERFIELD

4 bedroom home



GROUND FLOOR	metres	feet / inches
Kitchen / dining area	6.00 x 4.10	19' 8" x 13' 5"
Sitting room	4.80 x 3.30	15' 9" x 10' 10"

## FIRST FLOOR

Bedroom 1	3.70 x 3.40	12' 2" x 11' 2"
Bedroom 2	3.80 x 2.40	12' 6" x 7' 10"
Bedroom 3	3.40 x 2.70	11' 2" x 8' 10"
Bedroom 4	3.10 x 1.90	10' 2" x 6' 3"

ovn	oven	cup'd	cupboard
h	hob	< >	measuring points

### The Westerfield | Saddlers Reach |

The floorplan has been produced for illustrative purposes only. Room sizes shown are between arrow points as indicated on plan. The dimensions have tolerances of + or -50mm and should not be used other than for general guidance. If specific dimensions are required, enquiries should be made to the sales consultant. The floor plans shown are not to scale. Measurements are based on the original drawings. Slight variations may occur during construction.

The illustrations shown are computer generated impressions of how the property may look and are indicative only. External details or finishes may vary on individual plots and homes may be built in either detached or attached styles depending on the development layout. Exact specifications, window styles and whether a property is left or right-handed may differ from plot to plot. Please speak to our sales consultant for specific plot details.

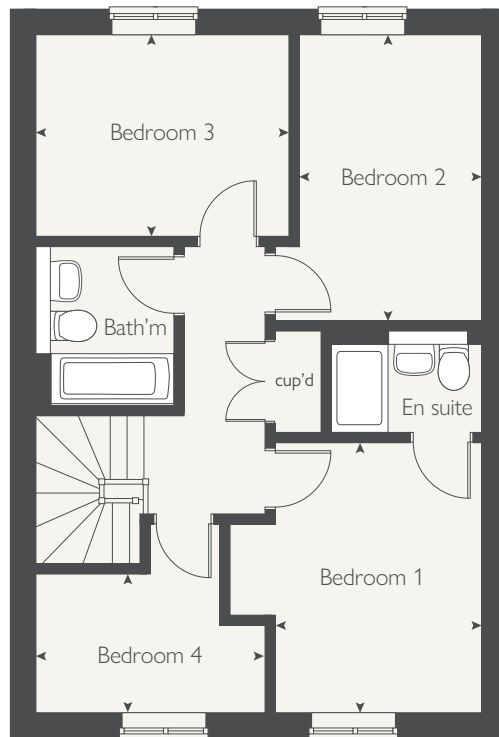
Produced by the Vistry Group Design Studio.

SC09A DS10439 / 06.24

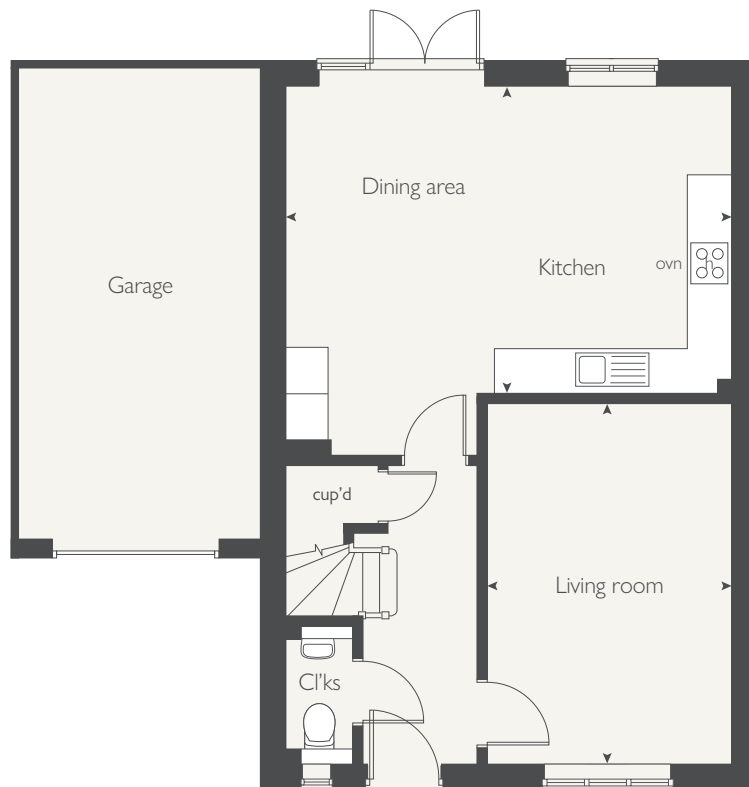


**COUNTRYSIDE**  
Homes

## FIRST FLOOR



## GROUND FLOOR







# SADDLERS REACH

Chichester

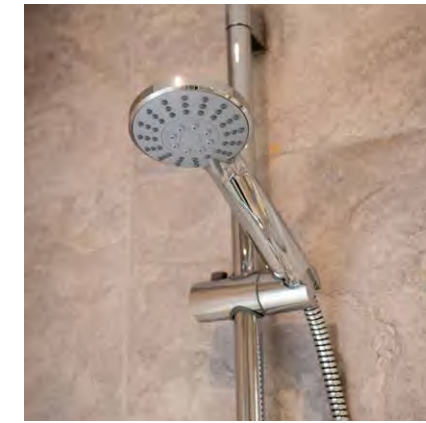


**COUNTRYSIDE**  
Homes

# SADDLERS REACH

## Chichester

Use this guide to see what features are included in your new home. Your sales consultant will be happy to discuss the Personalise range of extras available.



	2 bedroom The Badminton	3 bedroom The Hickstead The Richmond The Rutland	4 bedroom The Westerfield The Parwood
--	----------------------------	---	---

### KITCHEN

Choice of Standard fitted kitchen (doors and worktops)	■	■ ■ ■	■ ■
Choice of Premium fitted kitchen (doors and worktops)	■	■ ■ ■	■ ■
Stainless steel sink and drainer (single bowl) with chrome mixer tap	■	■ ■ ■	■ ■
Stainless steel sink and drainer (single bowl) with chrome mixer tap in utility		■	
Hotpoint induction hob with Indesit single oven with stainless steel hood	■	■ ■ ■	■ ■
Pendant light fitting	■	■ ■ ■	■ ■
Fridge / freezer space	■	■ ■ ■	■ ■
Space for washing machine with plumbing and electrics in kitchen	■	■ ■ ■	■ ■
Space for washing machine with plumbing and electrics in utility		■	

### BATHROOMS AND EN SUITE(S)

Ideal Standard contemporary white Concept Air sanitaryware	■	■ ■ ■	■ ■
Ideal Standard close coupled WC to cloakroom	■	■ ■ ■	■ ■
Handheld hair wash attachment		■ ■ ■	■ ■
Shower over the bath (full height tiling to length and side of bath)	■		
Ideal Standard low profile shower tray with glass enclosure to bedroom 1 en suite	■	■ ■ ■	■ ■
Choice of standard Porcelanosa wall tiling (splashback, 450mm over bath, and full-height to shower cubicle)*	■	■ ■ ■	■ ■

	2 bedroom The Badminton	3 bedroom The Hickstead The Richmond The Rutland	4 bedroom The Westerfield The Parwood
--	----------------------------	---	---

### DOORS AND WINDOWS

Front door with multi-point security locking system and security chain	■	■ ■ ■	■ ■
PVCu double glazing to windows	■	■ ■ ■	■ ■
Double glazed PVCu French doors	■	■ ■ ■	■ ■

### GENERAL

White painted walls and smooth white ceilings	■	■ ■ ■	■ ■
Multi-media point in living room	■	■ ■ ■	■ ■
TV point to bedroom 1	■	■ ■ ■	■ ■
Thermostatic valves to all radiators (with the exception of rooms with separate thermostat control)	■	■ ■ ■	■ ■
External light fitted to front porch and wiring for external light to rear door	■	■ ■ ■	■ ■
Mains wired smoke detectors with battery back-up	■	■ ■ ■	■ ■
Battery powered Carbon Monoxide detector (wall mounted) to be provided for each floor	■	■ ■ ■	■ ■
Enclosed fenced rear garden, and garden gate (where applicable)	■	■ ■ ■	■ ■
Landscaped front gardens	■	■ ■ ■	■ ■
Patio slabs to rear garden	■	■ ■ ■	■ ■
NHBC Buildmark cover	■	■ ■ ■	■ ■
First two years' customer service support from Countryside Homes	■	■ ■ ■	■ ■

■ Fitted as standard - included in the property  
\* Subject to stage of construction



# SO MUCH CHOICE...

Part of the excitement of buying a new home is the thrill of being the first person to live in the property and having a brand new contemporary kitchen and modern bathroom. Our premium brand partners ensure that all of our fixtures and fittings comply with the latest Government building regulations and only branded appliances are installed in your new home.

Once you know what specification comes included, you'll have a choice from our specially selected tiles for your kitchen and bathrooms, as well as kitchen worktops and cupboard doors. You can then use the Countryside Homes Personalise brochure to add the finishing touches to your home to make it extra special for you!

From personalising your bathrooms with stunning ceramics, or adding smooth sliding wardrobes to your main bedroom, there are a wide range of additional options and upgrades available.

The availability of items is subject to the stage of build, and can vary by development and house type. Our sales consultants will be happy to provide guidance.



The specification shown is correct at the time of production. Countryside Homes is continually reviewing and updating the specification on all house / apartment types and therefore reserves the right to change specification details. Photographs depict typical Countryside Homes interiors and may include optional upgrades. For full details regarding the current specification and finishes, please speak to our sales consultant

Produced by the Vistry Group Design Studio.

SC09A DS10439 / 06.24



**COUNTRYSIDE**  
Homes