

Feature17

Development Update

Issue 4 | Winter 2024



Keeping you updated every step of the way

As construction continues to progress on site, we wanted to provide you with an update to ensure that you are aware of what works are taking place and what you can expect from us over the coming months.

Phase Overview

This phase will deliver the following:

- 258 brand new homes including 146 open market, 47 Shared Ownership and 65 Affordable Rent properties
- New private and public green space
- New pedestrian routes for increased connectivity between Shernhall Street and Wood Street

Site activity

- ‘The Masey’ completed in November 2024, with residents now moving in
- Nine of the fourteen houses on Pinder Road have also completed
- Construction works have continued across all remaining five blocks

Upcoming Works

- Landscaping to south of ‘The Masey’ to complete
- Final five houses on Pinder Road to complete in December 2024
- Block 1 (Shared Ownership) to complete in Feb-25
- M&E first fix to commence and brickwork to complete in ‘The Granada’
- External work on building envelope to continue on ‘The Theodore’
- District Heating pipe work installation to 2nd phase

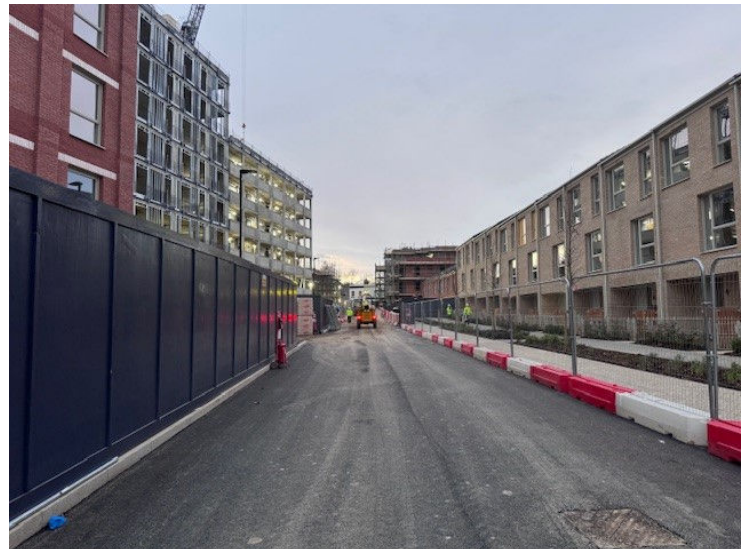
Feature17

Development Timeline

Issue 4 | Winter 2024

Sales & Marketing Suite

- The Feature17 Sales and Marketing Suite is open!
- Located just a 3-minute walk from Wood Street station, the suite is open from 10am to 5pm Monday to Sunday for both appointments and walk-ins.
- The address is as follows: Feature 17 Sales & Marketing Suite, Wood Street, Walthamstow, E17 3HX
- Over 75% of apartments in The Masey have now sold so please contact our Sales Team to book your viewing today!



Managing Agent

- A Resident Management Company (RMC) has been set up to manage and maintain the shared and communal facilities on the development. Each tenant of the block will be required to become a member of the RMC.
- Countryside Homes have appointed Encore Estate Management Ltd as the Managing Agent for Feature17. Encore will be responsible for the maintenance and upkeep of the residential buildings, as well as collecting your service charge.
- The London Borough of Waltham Forest will manage and maintain the external landscaping across the development.

What has been delivered to date

The following has been delivered at Feature17:

- 331 new homes across three phases
- Brand new Multi-Use Games Area and public plaza
- New library with ground floor café
- New Post Office and Co-op supermarket

Services

- The London Borough of Waltham Forest (LBWF) are the energy provider for Feature17. They manage and maintain the energy centre and the district heating network across the development.
- Residents will be required to enter into a Heat Supply Agreement with LBWF for their heating and hot water.

Feature17

Development Layout Plan

Issue 4 | Winter 2024



'The Masey' is now complete, with less than 25% of apartments remaining!

KEY

The Masey	7 storey apartment building - 1 & 2 bedroom apartments
The Theodore	8 storey apartment building - 1, 2 & 3 bedroom apartments
The Granada	7 storey apartment building - 1, 2 & 3 bedroom apartments

	Multi Use Games Area
	Playground
	Library
	Post Office
	Co-op
	Private Sale
	Pre-sold

How will the development benefit the local community?

Countryside Homes is supporting the local community by contributing over £600,000 in Social Value across the lifecycle of the development

In addition to this, Countryside are also providing:

- Section 106 contributions
- Opportunities for construction apprentices, work placements and offering support local residents into job vacancies on site
- Three years free Car Club membership for all residents

Please be aware that the dates and information provided are correct at time of print and are dependent on several factors, and therefore may be subject to change.

Thank you for your patience while the construction work is taking place. We try to keep disruption to a minimum but appreciate it can be noisy and dirty at times so do contact us if you have any questions, or if you'd like to provide any feedback, by emailing:

feature17@countrysidehomes.com