

ARORA

Azores House

CLAPHAM
PARK ^{SW4}

Welcome to Arora at Clapham Park.

Arora is the first phase delivered at Clapham Park as part of the joint venture between Countryside and Metropolitan Thames Valley Housing (MTVH).

Clapham Park will add to the already vibrant and thriving community of Clapham.

The development will deliver a wealth of open space; from communal gardens, to kids' play areas and elegantly landscaped parks.

Arora is perfectly placed to benefit from all of the joys and opportunities that popular Clapham brings. From city to nature (and everything in between)...

**Find a home you love in a place
where you'll want to stay forever.**

ARORA

Central Park.

Anytime Fitness.

The Crescent.

Podium gardens.

Clapham Park.

Spend your time outdoors with the 300-metre-long Central Park which stretches across the entirety of the development, offering plenty of green space for you to enjoy. There is also a multi-use games area and an Anytime Fitness conveniently close-by, so you can make sure you're getting your work-outs in.

Enjoy state of the art homes with green and solar roofs as well as extensive cycle parking and electric charging points, which offer you a diverse range of transport options. Not to mention the excellent public transport connections all around you.

Sports pitch.

The illustration shown is a computer generated image of how the development may look and is indicative only. External details and finishes may vary, please speak to our sales consultants for specific details.



Map for illustration purposes only, not to scale.

Local highlights.

PUBS & BARS

- 1 The Avalon**
16 Balham Hill, London SW12 9EB
- 2 The Devonshire**
39 Balham High Road, London SW12 9AN
- 3 The Little Orange Door**
16A Clapham Common South Side, London SW4 7AB
- 4 Lost & Found Bar**
10 Bedford Hill, London SW12 9RG
- 5 The Abbeville**
67-69 Abbeville Road, London SW4 9JW
- 6 The White Horse**
94 Brixton Hill, London SW2 1QN

RESTAURANTS

- 7 Minnow**
21 The Pavement, London SW4 0HY
- 8 Megan's on the Hill Restaurant**
41-43 Bedford Hill, London SW12 9EY
- 9 Willows**
11 The Polygon, London SW4 0JG
- 10 Buondi Ciuollosteria**
21 Balham High Road, London SW12 9AL
- 11 Osteria Toscana**
31 Abbeville Road, London SW4 9LA

COFFEE

- 12 Batch & Co Coffee**
54 Streatham Hill, London SW2 4RD
- 13 The Coffee Cabin London**
Streatham High Road, London SW2 4RU
- 14 Nue Ground**
32 Abbeville Road, London SW4 9NG
- 15 GAIL's Bakery**
71 Abbeville Road, London SW4 9JW

FITNESS

- 16 Anytime Fitness London**
3 Mullins Place, Kings Ave, London SW4 8EU
- 17 Fitnessworks**
38 Balham Hill, London SW12 9EL
- 18 Tooting Bec Lido**
Tooting Bec Rd, London SW16 1RU
- 19 Balham Leisure Centre**
Elmfield Rd, London SW17 8AN

Escape it all.

Local parks & recreational facilities



18 mins

Clapham Common

You can find something for everyone among Clapham Common's sprawling fields. For those who prefer to live life at a leisurely pace, the three ponds provide a perfect place to sit and relax. A variety of fish species can also be found in Eagle Pond and Mount Pond, making them popular choices for angling. At the centre of the common you'll find the Grade II listed bandstand, the largest in London and host to an array of open-air concerts in the summer.

The park is home to wide a range of sporting facilities, including pitches for cricket, football, rugby and Australian rules football, courts for tennis, basketball and netball, a running track, a bowling green and a skatepark.



6 mins

Tooting Bec Common

Tooting Bec Common has something to offer all year round, whether it's woodland walks in the winter or a summer splash in the lido. You can stay fit with a selection of sports pitches and facilities, or spend an afternoon relaxing by the lake.



5 mins

Agnes Riley Gardens

Nestled between Clapham, Balham and Streatham, Agnes Riley Gardens has pristinely landscaped lawns as well as a small pond at its centre. There's a playground and multi-use games areas for children to enjoy, alongside a paddling pool for cooling off on summer days and a community garden.



8 mins

Brockwell Park

Brockwell park is packed with things to do and see, from historic buildings, the walled garden and the Brockwell Lido to a ride-on mini railway, a BMX track and a wide selection of sports and play facilities. The community plays an active part in its management and development, with various community groups involved.



A hive of activity.

Staying fit in South London

There are plenty of ways to stay fit in this bustling corner of South London. The Clapham Common parkrun is a free weekly 5k community event for runners of all levels. There are plenty of local bootcamps to choose from, most of which are also based in the park.

If you prefer to exercise on your own, you can find a number of different gyms in the area, with a mixture of chains and independent

offerings. Or enjoy some zen and relaxation at Yoga Haven, which has a full schedule of classes every day. For some 1-to-1 fitness sessions, you can take advantage of the extensive offering of personal trainers in the area.

If you prefer to do your workouts in the water, or just like to do a few leisurely laps, Tooting Bec Lido is close by. This historical outdoor swimming pool opens during the warmer months, from May to September, and has just undergone extensive enhancements.

Out and about

Charity shop aficionados and anyone with an eye for thrifting should head to Northcote Road, where you'll find a few gems in any of the multiple charity shops.

You can keep your finger on the pulse of the London art scene at Studio Voltaire. It's a non-profit gallery with a focus on contemporary arts and new works, often serving as a platform for up-and-coming artists to display their work and providing opportunities for debut solo exhibitions.

Enjoy a next-level night out at Four Thieves; the perfect place to unleash your competitive side. You can jump in the driving seat and let chaos unfold at their Moonshine Raceway, where up to ten people can race RC cars on their track. There's also a variety of arcade games and a private karaoke room.

The Clapham Picturehouse is the ideal place to catch all the latest film releases. It's an iconic fixture of the local community, providing a comfy setting where you can get lost in the big screen, as well as a selection of inclusive screenings to make sure that everyone can enjoy what it has to offer.

Feel the buzz of Balham

Just down the road you'll find the hotspot of Balham, which has swiftly become popular among young professionals and families alike. Even though it's turning into the next south London hotspot with its mix of diverse eateries, boutique shops and vibrant cultural scene, it still retains its community feel.

Photographs of Clapham locations. Not view from the development. Please check the details of the homes you are interested in with our sales consultant.





The Abbeville

Abbeville Village.

Abbeville Village is home to an eclectic mix of shops, bars and eateries with a relaxed community feel.

The Abbeville
www.theabbeville.co.uk

Combining the feel of a proper neighbourhood pub with elevated gastropub cuisine, The Abbeville offers something for everyone. The open fire is a particularly popular spot in the chilly winter months, while tables spill out onto the street in the summer for drinks and dining in the sun.

Osteria Toscana
osteria-toscana.uk

Where else can you find an authentic taste of Italy in Clapham? Osteria Toscana is a family-owned restaurant serving up homemade Italian dishes and outstanding wines to pair with them.

The Ginger Pig
thegingerpig.co.uk

Find farm fresh meats in the heart of South West London at The Ginger Pig's butcher counter. You can even grab yourself a snack for the walk home, with hot takeaway lunches and sausage rolls available.



Osteria Toscana



Nue Ground

MacFarlane's
www.macfarlanesdeli.co.uk

A staple in Abbeville Village, MacFarlane's is an old-school deli offering the finest foods to kit out your kitchen pantry, from fresh cheese and cured meats, to breads, chutneys and more.



The Ginger Pig



MacFarlane's

Nue Ground
nueground.co.uk

Nue Ground is a wellness café that promotes health in every sense of the word. They take a mindful approach to their menu, with a focus on sustainability and ethically sourced products.

Local hotspots.



Venn Street Records
www.vennstreetrecords.com

Picture vintage vinyls, old NME posters and album covers combined with amazing live performances. The original of the infamous 'Records' bars, Venn Street is a music-loving den that has become one of the most popular bars in the area.

Venn Street Market
www.vennstreetmarket.co.uk

30 independent stalls selling street foods from around the world. Venn Street Market, in the heart of Clapham Old Town, is open from 10am to 3pm every Saturday.

London Cocktail Club
www.thecocktailclub.com/bars/clapham

Right in the middle of Clapham High Street is London Cocktail Club. Boasting movie-set style booths and world-class cocktails, perfect for a night out with friends.

The Windmill
www.windmillclapham.co.uk

Situated on the south side of Clapham Common, this well renowned, (dog-friendly) pub is a great place for a pint and some delicious food. Pub garden vibes in summer, and cosy canopy in winter, what more could you want?

Education.

Arora puts you within easy reach of a wide range of schools and universities that cater for all ages, providing peace of mind when you put down roots at Clapham Park.

ual: london college of communication

29 mins



London South Bank University

32 mins



38 mins

UNIVERSITY OF WESTMINSTER

42 mins



43 mins

Imperial College London

48 mins



THE LONDON SCHOOL OF ECONOMICS AND POLITICAL SCIENCE

51 mins

13

Nurseries in SW4 alone

Every kind of early learning, all within walking distance for little legs.

13

Primary schools in Clapham

02

Secondary schools

An array of community and independent schools within Clapham.

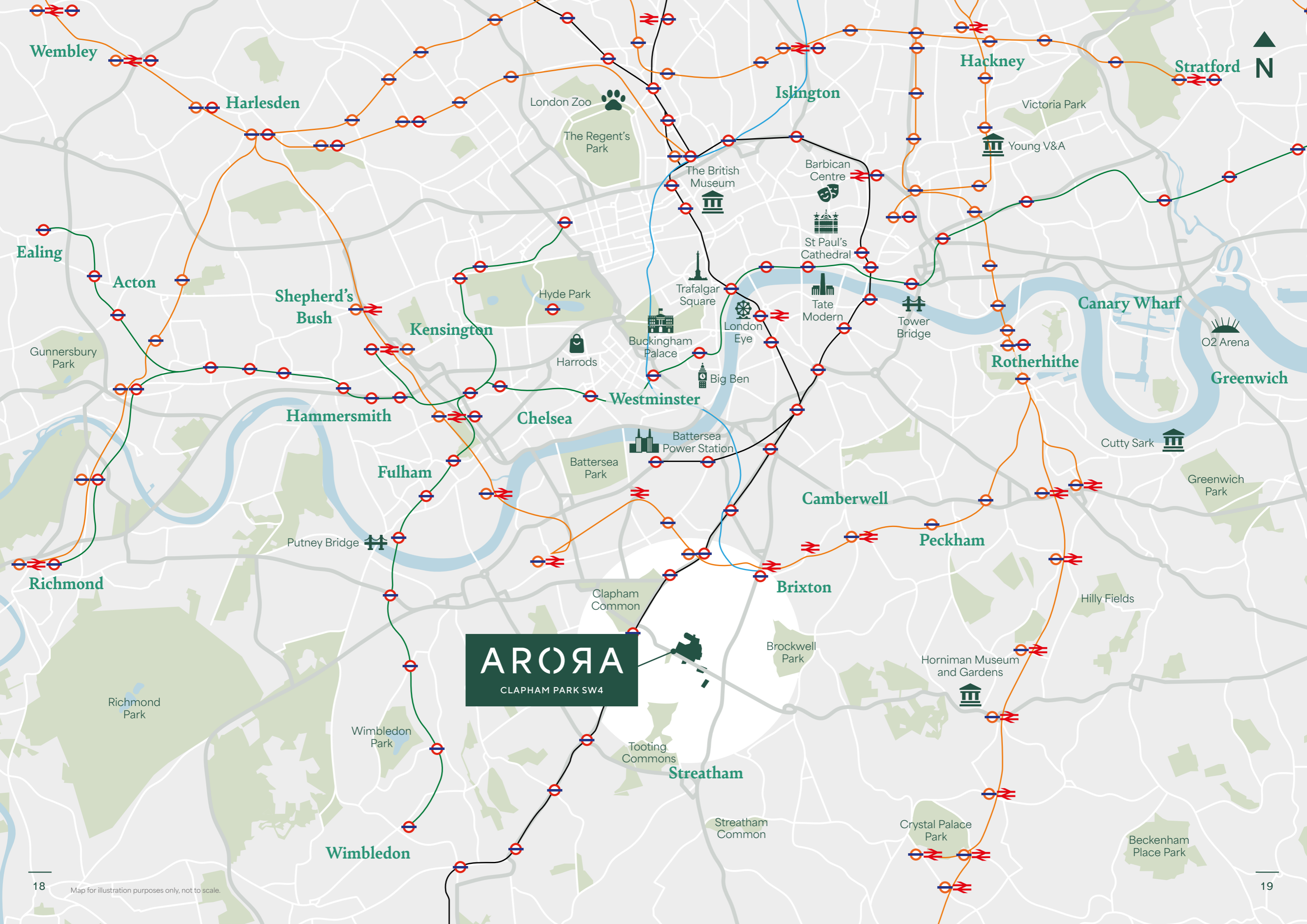
07

Top universities under an hour away

London is home to more world-class universities than any other city.

- Maytree Nursery School (0.2 mile / 4 min walk)
- Richard Atkins Primary School (0.3 mile / 7 min walk)
- St Bede's Catholic Nursery and Infant School (0.4 mile / 10 min walk)
- Harris Clapham Sixth Form (0.4 mile / 10 min walk)
- Harris Academy Clapham (0.5 mile / 10 min walk)
- Kings Avenue School (0.5 mile / 12 min walk)
- Sudbourne Primary School (0.6 mile / 13 min walk)
- Bonneville Primary School (0.7 mile / 16 min walk)
- Telferscot Primary School (0.7 mile / 16 min walk)
- Lambeth College - Brixton Centre (1 mile / 6 min cycle)
- Trinity Academy (1 mile / 6 min cycle)
- Saint Francis Xavier Sixth Form College (1 mile / 8 min cycle)
- The Elms Academy (1.1 mile / 5 min cycle)
- London Park School Clapham (1.2 mile / 9 min cycle)





ARORA
CLAPHAM PARK SW4

Wembley

Harlesden

Islington

Hackney

Stratford

Ealing

Acton

Shepherd's Bush

Kensington

Hyde Park

Trafalgar Square

Barbican Centre

St Paul's Cathedral

Tate Modern

Tower Bridge

Canary Wharf

Rotherhithe

Greenwich

Gunnersbury Park

Hammersmith

Chelsea

Westminster

Harrods

Buckingham Palace

Big Ben

Battersea Power Station

Cutty Sark

Greenwich Park

Fulham

Putney Bridge

Camberwell

Peckham

Richmond

Clapham Common

Brixton

Hilly Fields

ARORA

CLAPHAM PARK SW4

Brockwell Park

Horniman Museum and Gardens

Richmond Park

Wimbledon Park

Tooting Commons

Streatham

Streatham Common

Crystal Palace Park

Wimbledon

Beckenham Place Park

The place to connect.



You also have the ability to travel far and wide (if you want to)...

You can walk to nearby Clapham South tube station in 13 minutes, giving you access to the Northern line, meaning you have swift access into Central London (and beyond), so you are never more than a short journey from where you need to be.

The location benefits from a number of road links, including the A3 and A23 - connecting it with Central London to the north and the M25 to the south. It is also well served by a number of local bus routes.

FROM ARORA

	Clapham South (Northern line)	Clapham Common (Northern line)	Clapham High Street (London Overground)	Brixton (Victoria line)
On foot	13 mins	25 mins	28 mins	34 mins
By bus	10 mins	13 mins	18 mins	17 mins
By bike	4 mins	6 mins	6 mins	9 mins

FROM SELECTED STATIONS

	London Bridge	Battersea Power Station	Waterloo	Charing Cross
Clapham South (Northern line)	20 mins	28 mins	21 mins	23 mins
Clapham Common (Northern line)	18 mins	20 mins	21 mins	23 mins
	Clapham Junction	Peckham Rye	Shoreditch High Street	Kensington (Olympia)
Clapham High Street (London Overground)	14 mins	23 mins	13 mins	16 mins

Specification.

General finishes

- Amtico flooring in Mulled Oak herringbone pattern to hallway and living area
- TV points wired for access for digital
- TV and Sky Q (subject to subscription)
- BT connection provided
- High speed Hyperoptic broadband connection (subject to ongoing subscription)
- USB socket outlet to living area
- Underfloor heating throughout
- Video door entry system
- Wood veneer apartment entrance door with spyhole and two lever deadlock. Secure By Design certified
- Mains supply smoke and heat detection
- White finished internal doors
- White painted skirting and architraves
- Matt emulsion paint finish to walls and ceilings
- Decked balcony to apartments on upper floors
- Private terraces to ground floor units
- External lighting to balconies and terraces
- Mechanical Ventilation Heat Recovery System

Kitchen

- Contemporary designed kitchen with fitted wall and base units
- Quartz worktop and full height splashback
- 1½ bowl undermounted sink and mixer tap
- Siemens integrated single oven
- Siemens integrated microwave (to 1 bed apartments)
- Siemens integrated compact oven with microwave function (to 2 & 3 bed apartments)
- Siemens Induction hob with extractor above
- Siemens integrated fridge/freezer
- Siemens integrated dishwasher
- LED ceiling downlights
- Under pelmet feature lighting

Bedrooms

- Fitted wardrobe with mirror door (to bedroom 1 only)
- Fully fitted Abingdon carpet in French Linen
- TV/FM and telecom point (to bedroom 1 only)
- Pendant lighting



Bathrooms and en suites

- Cashmere bath panel, storage box and basin surround
- Saloni Street Arena tile to floor and selected walls
- Fitted mirror
- Semi-recessed hand basin
- WC pan, concealed cistern and dual flush
- Bath
- Shower (to en suites)
- Glass shower screen
- Thermostatic shower mixer
- Chrome mixer taps
- Electric heated towel rail
- Extractor ventilation
- Low voltage recessed downlighters
- Shaver socket

Cloaks cupboard

- Free standing Siemens washer dryer

Communal areas

- Door entry system to main block entrance
- Walls painted brilliant white
- Ground floor entrance lobby to be operated by dusk till dawn sensors
- Post boxes located within the core entrance lobbies

The specification shown is correct at the time of production. Please note that it may not always be possible to provide the branded products as referred to in the specification. In such cases, a similar alternative will be provided. Countryside Homes is continually reviewing and updating the specification on all homes and therefore reserves the right to change specification details. Photographs depict typical Countryside Home interiors and are indicative only. For full details regarding the current specification and finishes, please speak to our sales consultants.

Greener living.

Our homes are designed to help you save money on your energy bills.

Newly built properties are designed with the future in mind. We use the latest technologies to make them more energy efficient, lowering their environmental impact and running costs.

Even small improvements can help to bring down your energy bills in the long term. Our homes have external walls enhanced well above the minimum requirements, making sure they hold in valuable heat so you're less reliant on heating.

There will also be 4.18 hectares of high-quality public areas to play, exercise and relax in, connected by green space through the Central Park and green network throughout the development.



The benefits of buying our new homes.



Reduced heat loss

Reduced heat loss from exterior walls with thermal efficiency well above regulation requirements.



Energy efficient heating

Heat your home for less with our industry leading Air Source Heat Pump district heating network.



Heat recovery ventilation system

Keeps the air fresh while retaining heat in your home.



Tested for air tightness

No unwanted draughts and airflow.



Energy-efficient appliances

Keep running costs down with brand new appliances included in the price of your new home.



Multi zone thermostats

Reduce wasted energy by only heating the space you're in.





Clapham Park.

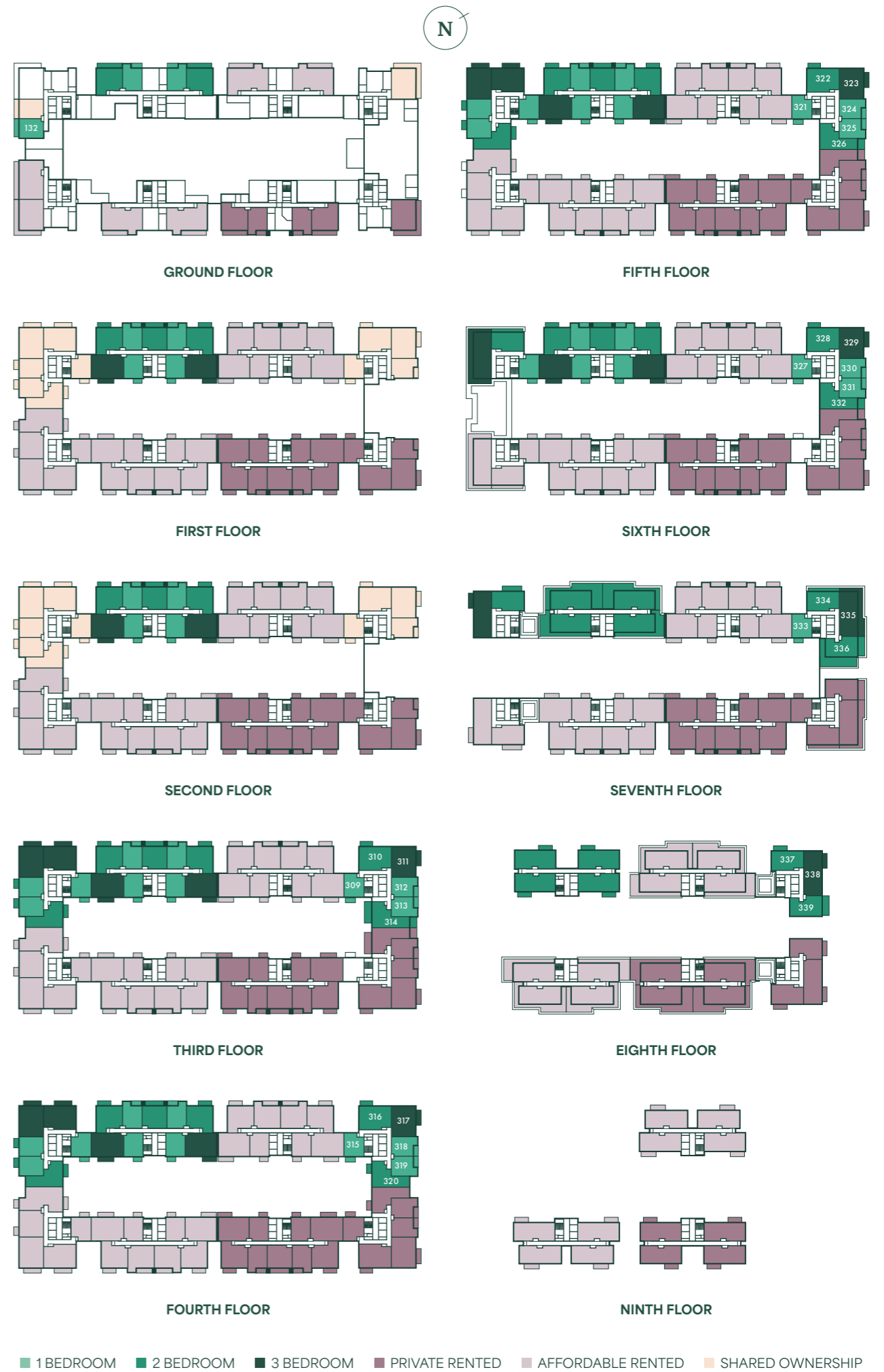


ARORA
CLAPHAM PARK SW4

- Underway
- Forthcoming
- Completed

This development plan has been produced for orientation purposes only and is not to scale. The development layout, landscaping and tenure of all dwellings may be subject to change throughout the course of the development. Finishes and materials may vary from those shown on the plan. Please check the details of your chosen plot with our sales consultants. Development layout plan correct at time of production.

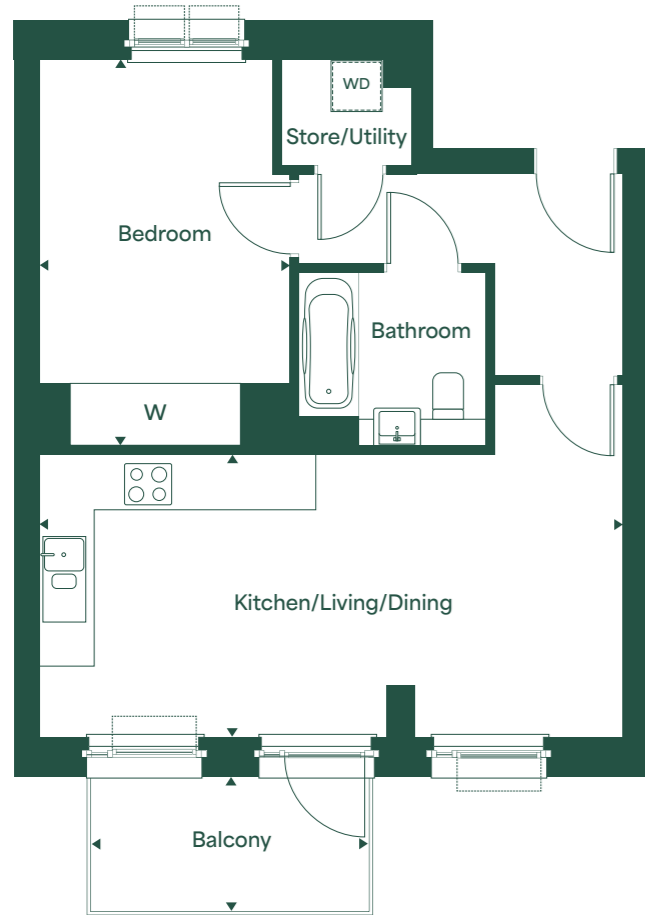
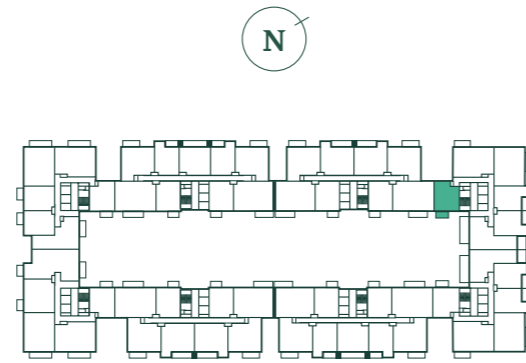
Find your home.



These floorplans have been produced for illustrative purposes only and are not to scale. Countryside Homes operate a policy of continuous product development, and all layouts may be subject to minor modifications. The tenure of all dwellings may be subject to change throughout the course of the development. Please speak to our sales consultants for details.

One bedroom apartment.

HOMES: 309, 315, 321 & 327



TOTAL AREA	51.3 SQ M	552 SQ FT
Kitchen/Living/Dining	6.91m x 3.37m	22'8" x 11'0"
Bedroom	4.58m x 2.99m	15'1" x 9'10"
Balcony	3.27m x 1.57m	10'9" x 5'2"

8 TH FLOOR	<input type="checkbox"/>
7 TH FLOOR	<input type="checkbox"/>
6 TH FLOOR	<input checked="" type="checkbox"/>
5 TH FLOOR	<input checked="" type="checkbox"/>
4 TH FLOOR	<input checked="" type="checkbox"/>
3 RD FLOOR	<input checked="" type="checkbox"/>
2 ND FLOOR	<input type="checkbox"/>
1 ST FLOOR	<input type="checkbox"/>
G FLOOR	<input type="checkbox"/>

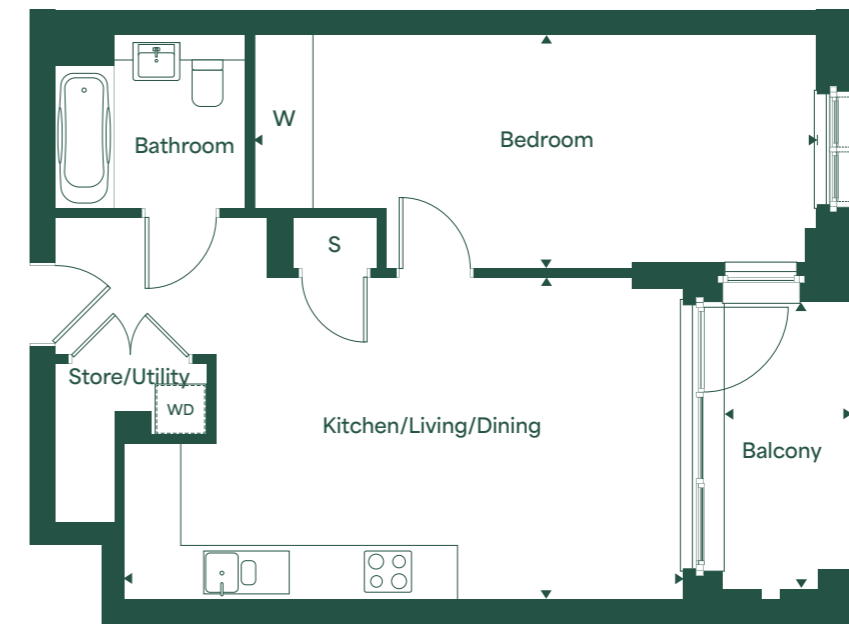
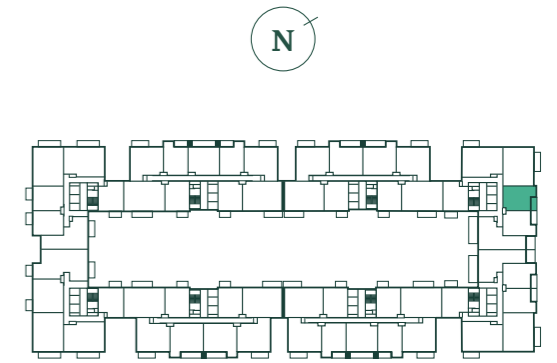
▲ DIMENSIONS W WARDROBE WD WASHER/DRYER

This floorplan has been produced for illustrative purposes only and is not to scale. Room sizes shown are between arrow points as indicated on plan. All room sizes are approximate showing maximum dimensions and should not be used other than for general guidance. Countryside Homes operate a policy of continuous product development, and all room layouts may be subject to minor modifications. Kitchen and bathroom layouts shown are indicative only. If specific dimensions are required, please speak to our sales consultants.



One bedroom apartment.

HOMES: 312, 318, 324 & 330



TOTAL AREA	52.7 SQ M	568 SQ FT
Kitchen/Living/Dining	6.58m x 3.79m	21'7" x 12'5"
Bedroom	6.62m x 2.75m	21'9" x 9'0"
Balcony	3.16m x 1.52m	10'4" x 5'0"

8 TH FLOOR	<input type="checkbox"/>
7 TH FLOOR	<input type="checkbox"/>
6 TH FLOOR	<input checked="" type="checkbox"/>
5 TH FLOOR	<input checked="" type="checkbox"/>
4 TH FLOOR	<input checked="" type="checkbox"/>
3 RD FLOOR	<input checked="" type="checkbox"/>
2 ND FLOOR	<input type="checkbox"/>
1 ST FLOOR	<input type="checkbox"/>
G FLOOR	<input type="checkbox"/>

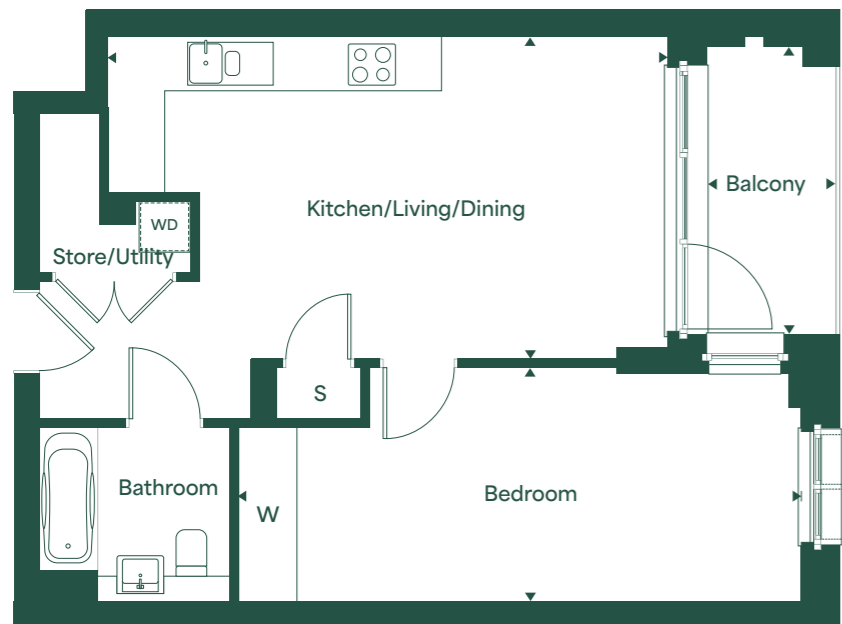
▲ DIMENSIONS S STORAGE W WARDROBE WD WASHER/DRYER

This floorplan has been produced for illustrative purposes only and is not to scale. Room sizes shown are between arrow points as indicated on plan. All room sizes are approximate showing maximum dimensions and should not be used other than for general guidance. Countryside Homes operate a policy of continuous product development, and all room layouts may be subject to minor modifications. Kitchen and bathroom layouts shown are indicative only. If specific dimensions are required, please speak to our sales consultants.



One bedroom apartment.

HOMES: 313, 319, 325 & 331



TOTAL AREA	52.7 SQ M	568 SQ FT
Kitchen/Living/Dining	6.58m x 3.79m	21'7" x 12'5"
Bedroom	6.62m x 2.75m	21'9" x 9'0"
Balcony	3.16m x 1.52m	10'4" x 5'0"

- 8TH FLOOR
- 7TH FLOOR
- 6TH FLOOR
- 5TH FLOOR
- 4TH FLOOR
- 3RD FLOOR
- 2ND FLOOR
- 1ST FLOOR
- G FLOOR

▲ DIMENSIONS S STORAGE W WARDROBE WD WASHER/DRYER

This floorplan has been produced for illustrative purposes only and is not to scale. Room sizes shown are between arrow points as indicated on plan. All room sizes are approximate showing maximum dimensions and should not be used other than for general guidance. Countryside Homes operate a policy of continuous product development, and all room layouts may be subject to minor modifications. Kitchen and bathroom layouts shown are indicative only. If specific dimensions are required, please speak to our sales consultants.



One bedroom apartment.

HOME: 333



TOTAL AREA	51.3 SQ M	552 SQ FT
Kitchen/Living/Dining	6.91m x 3.37m	22'8" x 11'0"
Bedroom	4.58m x 2.99m	15'1" x 9'10"
Balcony	3.27m x 1.57m	10'9" x 5'2"

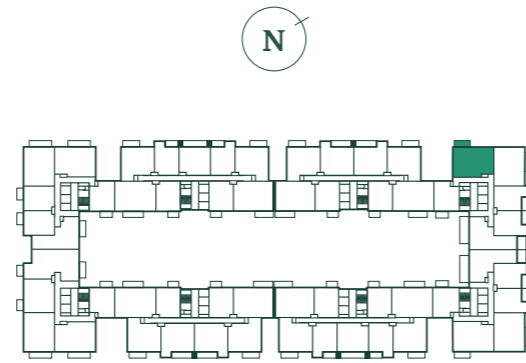
- 8TH FLOOR
- 7TH FLOOR
- 6TH FLOOR
- 5TH FLOOR
- 4TH FLOOR
- 3RD FLOOR
- 2ND FLOOR
- 1ST FLOOR
- G FLOOR

▲ DIMENSIONS W WARDROBE WD WASHER/DRYER

This floorplan has been produced for illustrative purposes only and is not to scale. Room sizes shown are between arrow points as indicated on plan. All room sizes are approximate showing maximum dimensions and should not be used other than for general guidance. Countryside Homes operate a policy of continuous product development, and all room layouts may be subject to minor modifications. Kitchen and bathroom layouts shown are indicative only. If specific dimensions are required, please speak to our sales consultants.

Two bedroom apartment.

HOMES: 310, 316, 322 & 328



Wheelchair adaptable

TOTAL AREA	87.3 SQ M	939 SQ FT
Kitchen/Living/Dining	8.05m x 4.74m	26'5" x 15'7"
Bedroom 1	5.49m x 3.00m	18'0" x 9'10"
Bedroom 2	4.05m x 3.24m	13'4" x 10'8"
Balcony	4.39m x 1.57m	14'5" x 5'2"

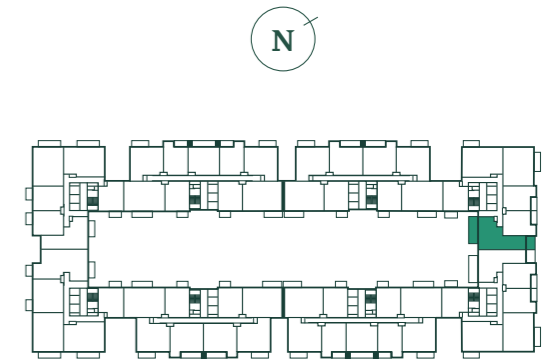
8 TH FLOOR	<input type="checkbox"/>
7 TH FLOOR	<input type="checkbox"/>
6 TH FLOOR	<input checked="" type="checkbox"/>
5 TH FLOOR	<input checked="" type="checkbox"/>
4 TH FLOOR	<input checked="" type="checkbox"/>
3 RD FLOOR	<input checked="" type="checkbox"/>
2 ND FLOOR	<input type="checkbox"/>
1 ST FLOOR	<input type="checkbox"/>
G FLOOR	<input type="checkbox"/>

▲ DIMENSIONS S STORAGE W WARDROBE WD WASHER/DRYER

This floorplan has been produced for illustrative purposes only and is not to scale. Room sizes shown are between arrow points as indicated on plan. All room sizes are approximate showing maximum dimensions and should not be used other than for general guidance. Countryside Homes operate a policy of continuous product development, and all room layouts may be subject to minor modifications. Kitchen and bathroom layouts shown are indicative only. If specific dimensions are required, please speak to our sales consultants.

Two bedroom apartment.

HOME: 314



TOTAL AREA	75.4 SQ M	812 SQ FT
Kitchen/Living/Dining	5.86m x 3.91m	19'3" x 12'10"
Bedroom 1	5.35m x 3.61m	17'7" x 11'10"
Bedroom 2	5.37m x 3.55m	17'8" x 11'8"
Terrace 1	7.46m x 2.22m	24'6" x 7'4"
Terrace 2	3.44m x 2.17m	11'3" x 7'1"

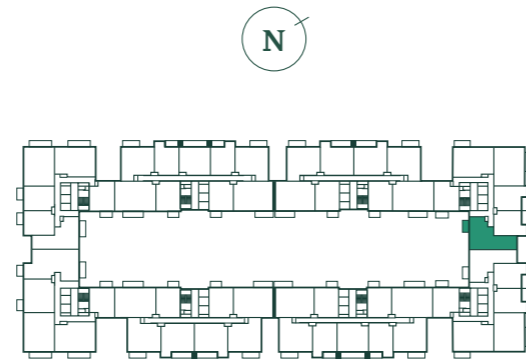
8 TH FLOOR	<input type="checkbox"/>
7 TH FLOOR	<input type="checkbox"/>
6 TH FLOOR	<input type="checkbox"/>
5 TH FLOOR	<input type="checkbox"/>
4 TH FLOOR	<input type="checkbox"/>
3 RD FLOOR	<input checked="" type="checkbox"/>
2 ND FLOOR	<input type="checkbox"/>
1 ST FLOOR	<input type="checkbox"/>
G FLOOR	<input type="checkbox"/>

▲ DIMENSIONS S STORAGE W WARDROBE WD WASHER/DRYER

This floorplan has been produced for illustrative purposes only and is not to scale. Room sizes shown are between arrow points as indicated on plan. All room sizes are approximate showing maximum dimensions and should not be used other than for general guidance. Countryside Homes operate a policy of continuous product development, and all room layouts may be subject to minor modifications. Kitchen and bathroom layouts shown are indicative only. If specific dimensions are required, please speak to our sales consultants.

Two bedroom apartment.

HOMES: 320, 326 & 332



TOTAL AREA	75.4 SQ M	811 SQ FT
Kitchen/Living/Dining	5.86m x 3.91m	19'3" x 12'10"
Bedroom 1	5.35m x 3.61m	17'7" x 11'10"
Bedroom 2	5.37m x 3.55m	17'8" x 11'8"
Balcony	3.26m x 1.57m	10'9" x 5'2"

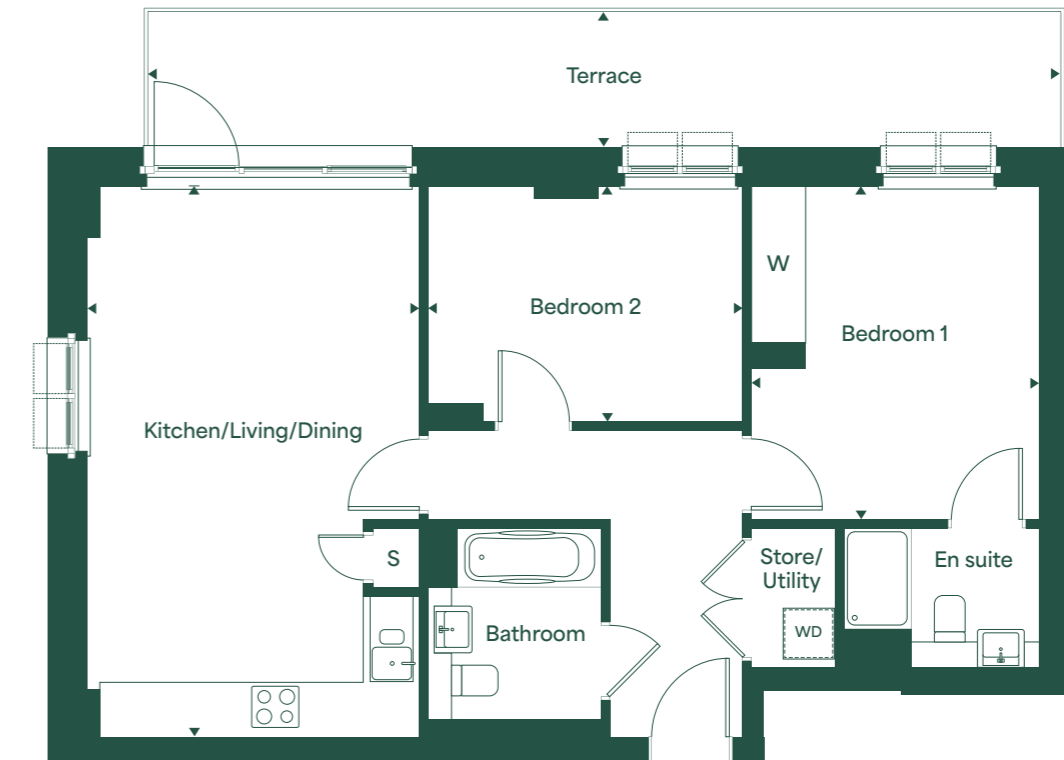
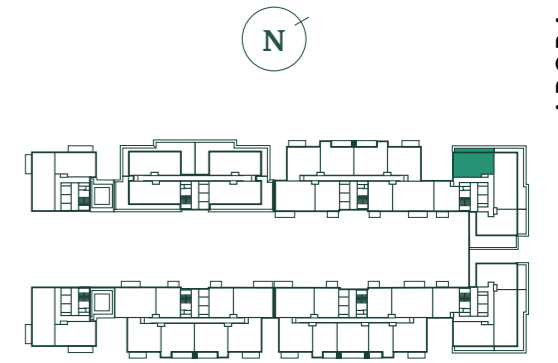
- 8TH FLOOR
- 7TH FLOOR
- 6TH FLOOR
- 5TH FLOOR
- 4TH FLOOR
- 3RD FLOOR
- 2ND FLOOR
- 1ST FLOOR
- G FLOOR

▲ DIMENSIONS S STORAGE W WARDROBE WD WASHER/DRYER

This floorplan has been produced for illustrative purposes only and is not to scale. Room sizes shown are between arrow points as indicated on plan. All room sizes are approximate showing maximum dimensions and should not be used other than for general guidance. Countryside Homes operate a policy of continuous product development, and all room layouts may be subject to minor modifications. Kitchen and bathroom layouts shown are indicative only. If specific dimensions are required, please speak to our sales consultants.

Two bedroom apartment.

HOME: 334



TOTAL AREA	69.6 SQ M	750 SQ FT
Kitchen/Living/Dining	6.47m x 3.89m	21'3" x 12'9"
Bedroom 1	3.91m x 3.38m	12'10" x 11'1"
Bedroom 2	3.70m x 2.77m	12'2" x 9'1"
Terrace	11.11m x 0.94m	36'5" x 3'1"

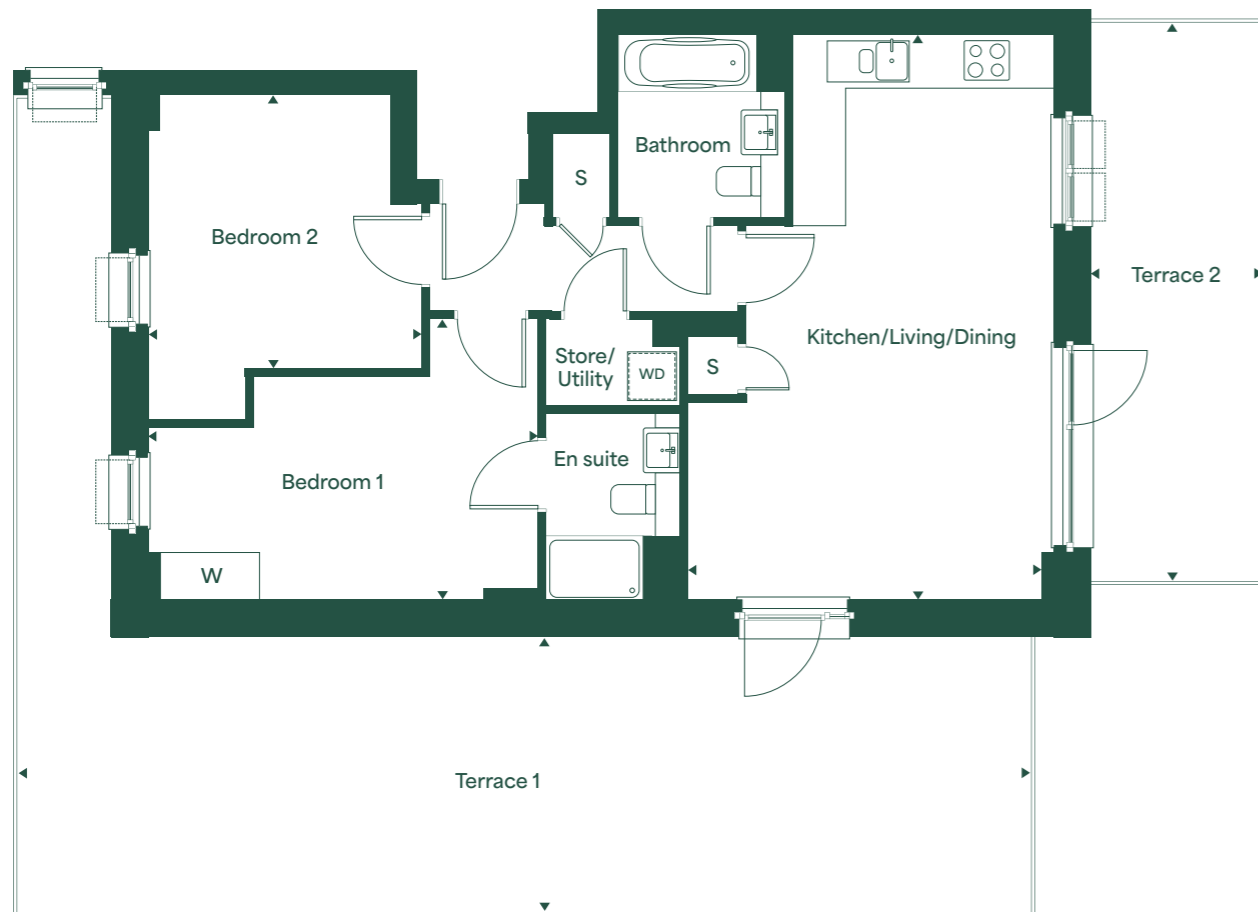
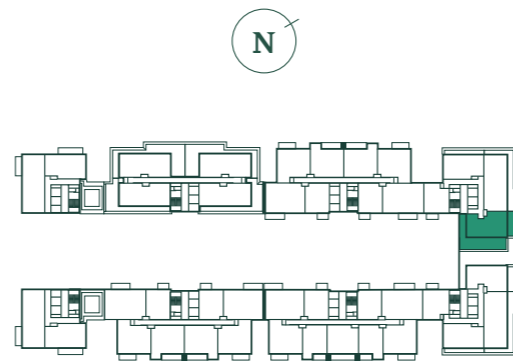
- 8TH FLOOR
- 7TH FLOOR
- 6TH FLOOR
- 5TH FLOOR
- 4TH FLOOR
- 3RD FLOOR
- 2ND FLOOR
- 1ST FLOOR
- G FLOOR

▲ DIMENSIONS S STORAGE W WARDROBE WD WASHER/DRYER

This floorplan has been produced for illustrative purposes only and is not to scale. Room sizes shown are between arrow points as indicated on plan. All room sizes are approximate showing maximum dimensions and should not be used other than for general guidance. Countryside Homes operate a policy of continuous product development, and all room layouts may be subject to minor modifications. Kitchen and bathroom layouts shown are indicative only. If specific dimensions are required, please speak to our sales consultants.

Two bedroom apartment.

HOME: 336



TOTAL AREA	70 SQ M	754 SQ FT
Kitchen/Living/Dining	6.94m x 4.34m	22'10" x 14'3"
Bedroom 1	4.78m x 3.45m	15'8" x 11'4"
Bedroom 2	3.37m x 3.37m	11'1" x 11'1"
Terrace 1	12.52m x 9.96m	41'1" x 32'8"
Terrace 2	6.90m x 2.18m	22'8" x 7'2"

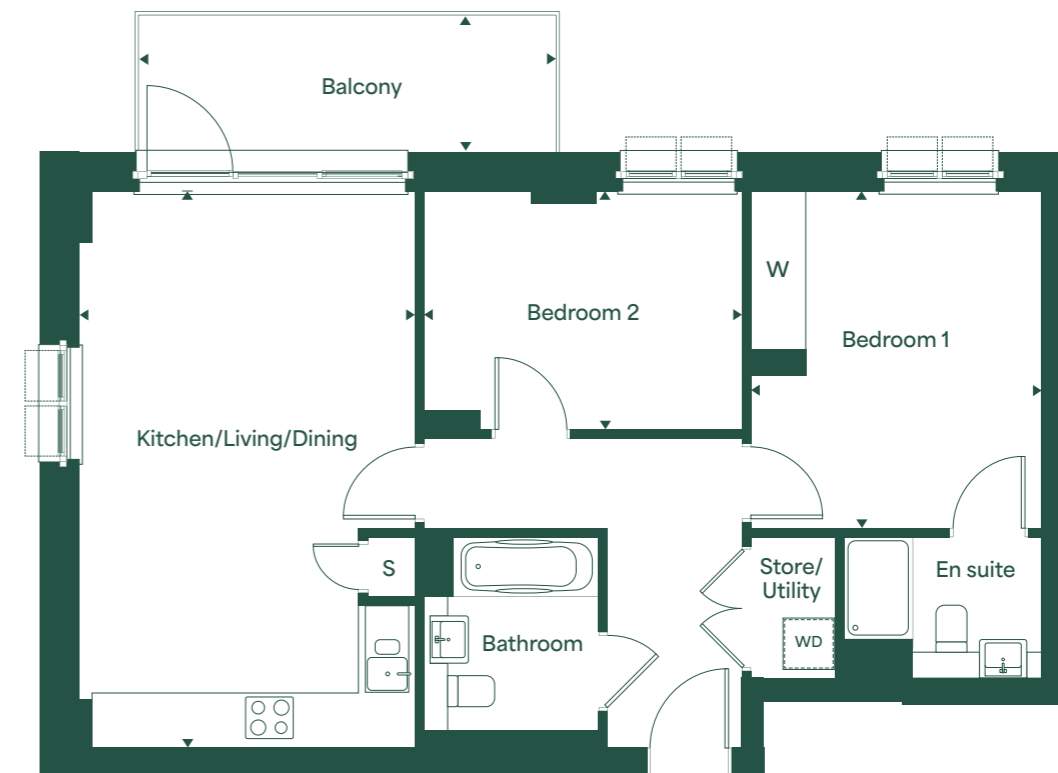
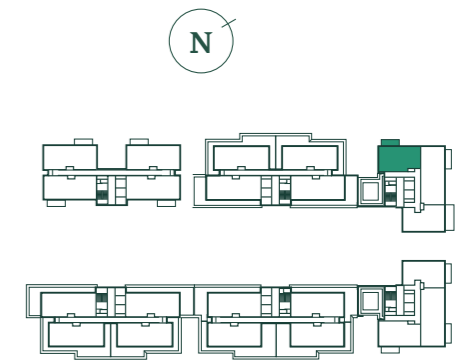
- 8TH FLOOR
- 7TH FLOOR
- 6TH FLOOR
- 5TH FLOOR
- 4TH FLOOR
- 3RD FLOOR
- 2ND FLOOR
- 1ST FLOOR
- G FLOOR

▲ DIMENSIONS S STORAGE W WARDROBE WD WASHER/DRYER

This floorplan has been produced for illustrative purposes only and is not to scale. Room sizes shown are between arrow points as indicated on plan. All room sizes are approximate showing maximum dimensions and should not be used other than for general guidance. Countryside Homes operate a policy of continuous product development, and all room layouts may be subject to minor modifications. Kitchen and bathroom layouts shown are indicative only. If specific dimensions are required, please speak to our sales consultants.

Two bedroom apartment.

HOME: 337



TOTAL AREA	69.6 SQ M	750 SQ FT
Kitchen/Living/Dining	6.47m x 3.89m	21'3" x 12'9"
Bedroom 1	3.91m x 3.38m	12'10" x 11'1"
Bedroom 2	3.70m x 2.77m	12'2" x 9'1"
Balcony	4.84m x 1.57m	15'11" x 5'2"

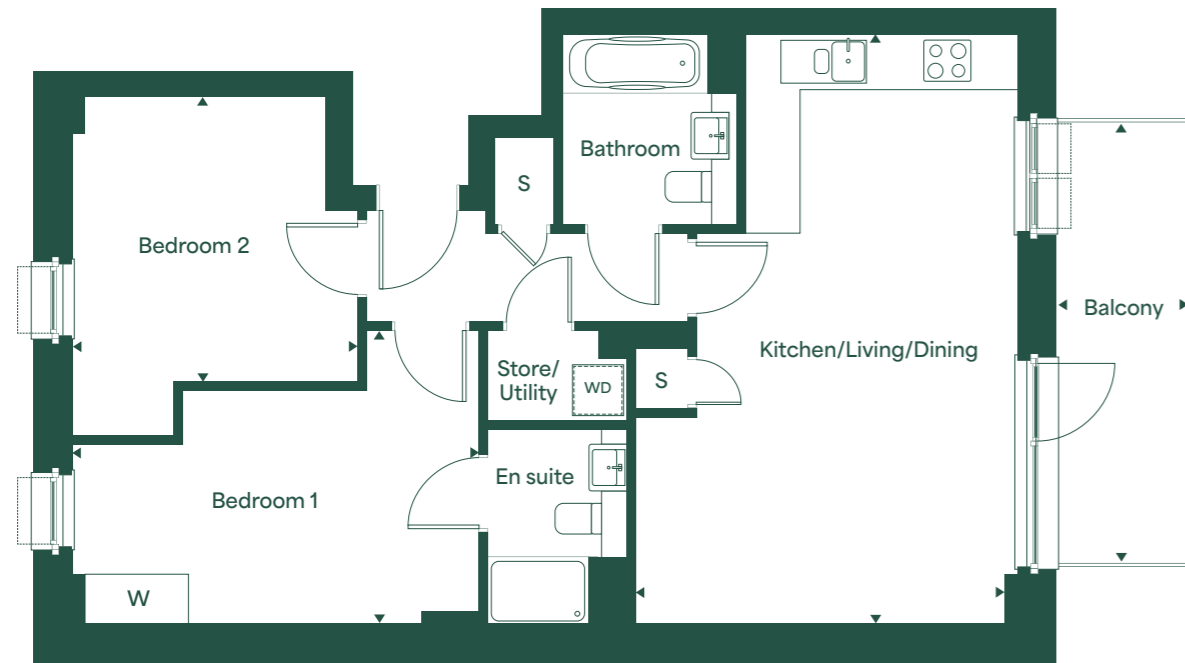
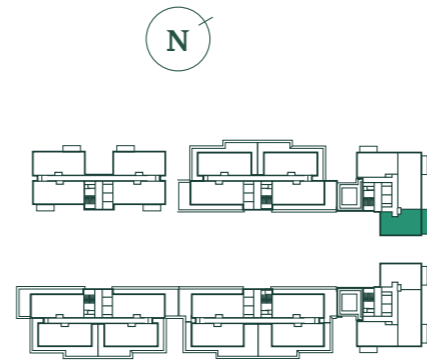
- 8TH FLOOR
- 7TH FLOOR
- 6TH FLOOR
- 5TH FLOOR
- 4TH FLOOR
- 3RD FLOOR
- 2ND FLOOR
- 1ST FLOOR
- G FLOOR

▲ DIMENSIONS S STORAGE W WARDROBE WD WASHER/DRYER

This floorplan has been produced for illustrative purposes only and is not to scale. Room sizes shown are between arrow points as indicated on plan. All room sizes are approximate showing maximum dimensions and should not be used other than for general guidance. Countryside Homes operate a policy of continuous product development, and all room layouts may be subject to minor modifications. Kitchen and bathroom layouts shown are indicative only. If specific dimensions are required, please speak to our sales consultants.

Two bedroom apartment.

HOME: 339



TOTAL AREA	70 SQ M	754 SQ FT
Kitchen/Living/Dining	6.94m x 4.34m	22'10" x 14'3"
Bedroom 1	4.78m x 3.45m	15'8" x 11'4"
Bedroom 2	3.37m x 3.37m	11'1" x 11'1"
Balcony	5.17m x 1.57m	17'0" x 5'2"

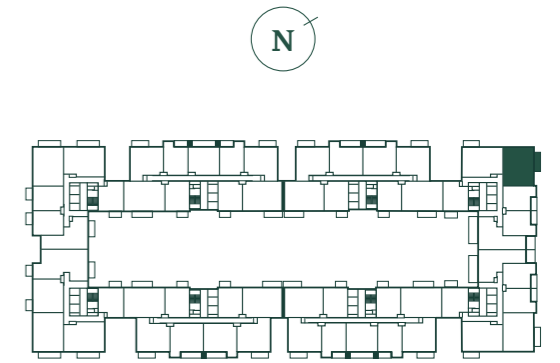
8 TH FLOOR	<input checked="" type="checkbox"/>
7 TH FLOOR	<input type="checkbox"/>
6 TH FLOOR	<input type="checkbox"/>
5 TH FLOOR	<input type="checkbox"/>
4 TH FLOOR	<input type="checkbox"/>
3 RD FLOOR	<input type="checkbox"/>
2 ND FLOOR	<input type="checkbox"/>
1 ST FLOOR	<input type="checkbox"/>
G FLOOR	<input type="checkbox"/>

▲ DIMENSIONS S STORAGE W WARDROBE WD WASHER/DRYER

This floorplan has been produced for illustrative purposes only and is not to scale. Room sizes shown are between arrow points as indicated on plan. All room sizes are approximate showing maximum dimensions and should not be used other than for general guidance. Countryside Homes operate a policy of continuous product development, and all room layouts may be subject to minor modifications. Kitchen and bathroom layouts shown are indicative only. If specific dimensions are required, please speak to our sales consultants.

Three bedroom apartment.

HOMES: 311, 317, 323 & 329



TOTAL AREA	87.1 SQ M	937 SQ FT
Kitchen/Living/Dining	5.44m x 4.65m	17'10" x 15'3"
Bedroom 1	4.56m x 2.80m	15'0" x 9'2"
Bedroom 2	4.30m x 2.85m	14'1" x 9'6"
Bedroom 3	4.11m x 2.89m	13'6" x 9'6"
Balcony	5.29m x 1.57m	17'4" x 5'2"

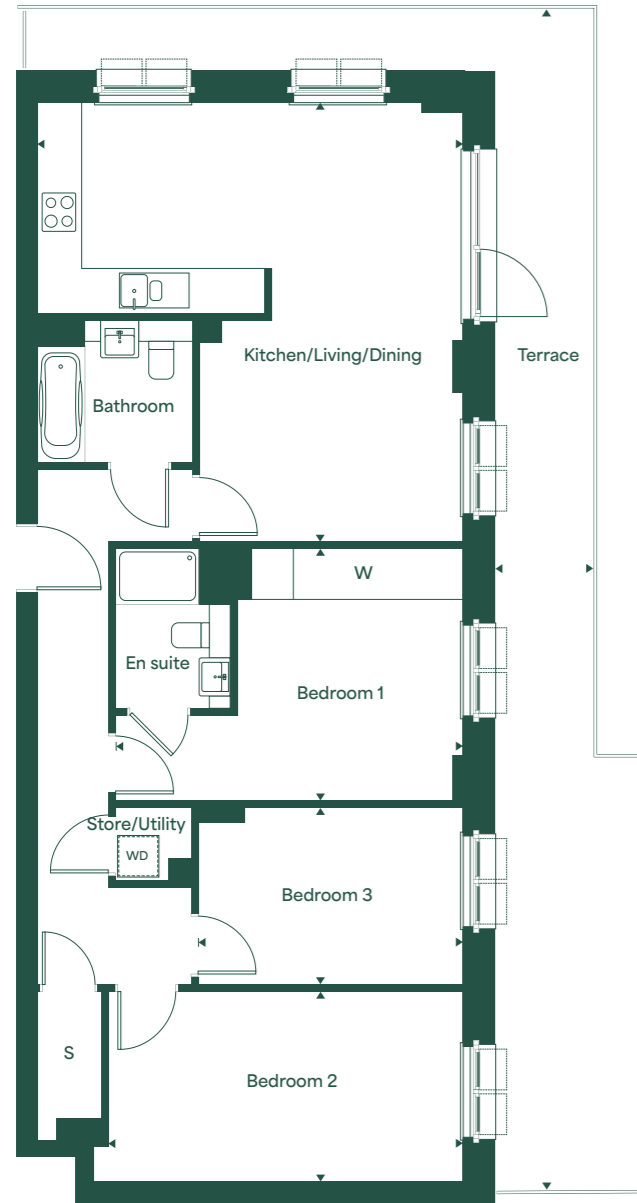
8 TH FLOOR	<input type="checkbox"/>
7 TH FLOOR	<input type="checkbox"/>
6 TH FLOOR	<input checked="" type="checkbox"/>
5 TH FLOOR	<input checked="" type="checkbox"/>
4 TH FLOOR	<input checked="" type="checkbox"/>
3 RD FLOOR	<input checked="" type="checkbox"/>
2 ND FLOOR	<input type="checkbox"/>
1 ST FLOOR	<input type="checkbox"/>
G FLOOR	<input type="checkbox"/>

▲ DIMENSIONS S STORAGE W WARDROBE WD WASHER/DRYER

This floorplan has been produced for illustrative purposes only and is not to scale. Room sizes shown are between arrow points as indicated on plan. All room sizes are approximate showing maximum dimensions and should not be used other than for general guidance. Countryside Homes operate a policy of continuous product development, and all room layouts may be subject to minor modifications. Kitchen and bathroom layouts shown are indicative only. If specific dimensions are required, please speak to our sales consultants.

Three bedroom apartment.

HOME: 335



TOTAL AREA	95.4 SQ M	1,026 SQ FT
Kitchen/Living/Dining	6.34m x 6.15m	20'10" x 20'2"
Bedroom 1	5.00m x 3.63m	16'5" x 11'11"
Bedroom 2	5.12m x 2.75m	16'10" x 9'0"
Bedroom 3	3.82m x 2.55m	12'6" x 8'4"
Terrace	17.08m x 8.24m	56'0" x 2'7"

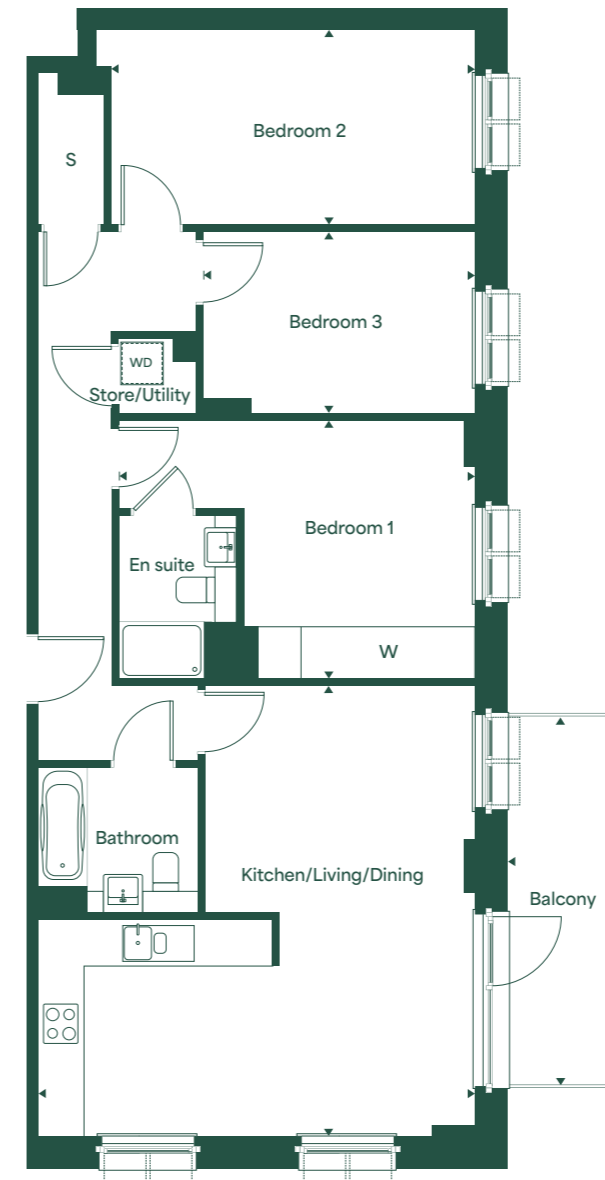
- 8TH FLOOR
- 7TH FLOOR
- 6TH FLOOR
- 5TH FLOOR
- 4TH FLOOR
- 3RD FLOOR
- 2ND FLOOR
- 1ST FLOOR
- G FLOOR

▲ DIMENSIONS S STORAGE W WARDROBE WD WASHER/DRYER

This floorplan has been produced for illustrative purposes only and is not to scale. Room sizes shown are between arrow points as indicated on plan. All room sizes are approximate showing maximum dimensions and should not be used other than for general guidance. Countryside Homes operate a policy of continuous product development, and all room layouts may be subject to minor modifications. Kitchen and bathroom layouts shown are indicative only. If specific dimensions are required, please speak to our sales consultants.

Three bedroom apartment.

HOME: 338



TOTAL AREA	95.4 SQ M	1,026 SQ FT
Kitchen/Living/Dining	6.34m x 6.15m	20'10" x 20'2"
Bedroom 1	5.00m x 3.63m	16'5" x 11'11"
Bedroom 2	5.12m x 2.75m	16'10" x 9'0"
Bedroom 3	3.82m x 2.55m	12'6" x 8'4"
Balcony	5.17m x 1.57m	17'0" x 5'2"

- 8TH FLOOR
- 7TH FLOOR
- 6TH FLOOR
- 5TH FLOOR
- 4TH FLOOR
- 3RD FLOOR
- 2ND FLOOR
- 1ST FLOOR
- G FLOOR

▲ DIMENSIONS S STORAGE W WARDROBE WD WASHER/DRYER

This floorplan has been produced for illustrative purposes only and is not to scale. Room sizes shown are between arrow points as indicated on plan. All room sizes are approximate showing maximum dimensions and should not be used other than for general guidance. Countryside Homes operate a policy of continuous product development, and all room layouts may be subject to minor modifications. Kitchen and bathroom layouts shown are indicative only. If specific dimensions are required, please speak to our sales consultants.

Two bedroom show apartment.



TOTAL AREA	83.1 SQ M	894 SQ FT
Kitchen/Living/Dining	7.69m x 3.40m	25' 3" x 11' 2"
Bedroom 1	4.60m x 2.95m	15' 1" x 9' 8"
Bedroom 2	4.40m x 2.75m	14' 5" x 9' 0"

▲ DIMENSIONS S STORAGE W WARDROBE WD WASHER/DRYER

- 8TH FLOOR
- 7TH FLOOR
- 6TH FLOOR
- 5TH FLOOR
- 4TH FLOOR
- 3RD FLOOR
- 2ND FLOOR
- 1ST FLOOR
- G FLOOR

This floorplan has been produced for illustrative purposes only and is not to scale. Room sizes shown are between arrow points as indicated on plan. All room sizes are approximate showing maximum dimensions and should not be used other than for general guidance. Countryside Homes operate a policy of continuous product development, and all room layouts may be subject to minor modifications. Kitchen and bathroom layouts shown are indicative only. If specific dimensions are required, please speak to our sales consultants.



Award winning customer satisfaction.



Every home at Clapham Park carries our commitment to quality. You have the added assurance of every home coming with a National House Building Council (NHBC) Warranty.

Each property is quality checked and commissioned by our dedicated Customer Service team before handed over to you. That's why from the moment you reserve your new home to the day you receive your keys and beyond, a dedicated Sales and Customer Service Team will ensure you receive the very best service from Countryside Homes.

The whole team is working to achieve one common goal: to ensure that you are satisfied and happy with your new home at Clapham Park.

No matter who you are dealing with or what queries or concerns you may have, you can be confident that our procedures will adhere to the terms of the New Homes Quality Code (NHQC).

All of our homes carry the NHBC Builders Warranty, plus a comprehensive two-year Customer Service Warranty as standard, giving you 24-hour emergency cover for your heating, plumbing and electrical items.





**Metropolitan
Thames Valley**

Metropolitan is one of the UK's leading providers of affordable housing and care and support services. Metropolitan own and manage a large portfolio of nearly 37,000 homes and serve more than 71,000 customers across London, the East Midlands and the East of England.

Metropolitan are a member of the National Housing Federation and the G15, which represents London's 15 largest housing associations that house 1 in 10 Londoners.

Metropolitan's mission is to be a leading provider of packages offering homes that are affordable, along with access to services that enable customers to maximise their independence.

**For more information,
visit: www.mtvh.co.uk**




COUNTRYSIDE
Homes

Countryside Homes, part of the Vistry Group, is a FTSE 100 company and a leading UK home builder and urban regeneration partner. We believe that where we live matters. We're passionate about creating places where people aspire to live.



We create places people love

All our developments carry a signature style and character, designed to work for the way people live today with materials that reflect our commitment to quality. Our exacting standards and sustainable credentials unite to create places that stand the test of time. As a result, we hold

more Housing Design Awards than any other developer. From the character of the homes we build, to the planning and unique detailing of environments, our creative approach to place-making provides a greater sense of belonging, spirit of neighbourhood and quality of life. Countryside Homes is a HBF 5* developer.

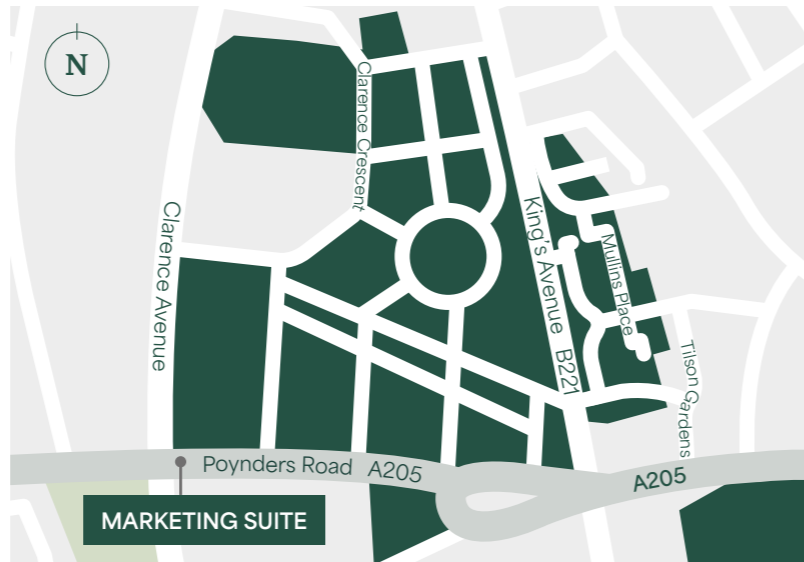
The illustrations shown are computer generated image of how the property may look and are indicative only. External details and finishes may vary, please speak to our sales consultants for specific details.



**Visit our
Marketing Suite:**

107 Clarence Avenue,
London, SW4 8FR

020 3918 3304
arora.london



Getting here

Exit Clapham South tube station and turn right onto Balham Hill and then left onto Hazelbourne Road. Follow the road to continue onto Poynders Road. Continue as you reach Clarence Avenue on the left, and the Marketing Suite will be on your right.

Map for illustration purposes only, not to scale. Every care has been taken in the preparation of this brochure. The details contained therein are for guidance only and should not be relied upon as exactly describing any of the particular material illustrated or written by any order under the Consumer Protection from Unfair Trading Regulations 2008. This information does not constitute a contract, part of a contract or warranty. Computer generated images, maps and development layouts are intended for illustrative purposes and should be treated as general guidance only. The features, designs, materials and visual depictions of, and in our show homes and in our show home photography must be treated as general illustration and guidance only. The tenure of all dwellings may be subject to change throughout the course of the development. Furniture and fittings are not included. Countryside Homes operate a programme of continuous product development. Features, internal and external, may vary from time to time and may differ from those shown in the brochure. Please speak to our sales consultants for details.



COUNTRYSIDE
Homes