

# CHAPEL GATE

Salisbury





# CHAPEL GATE

Salisbury



**COUNTRYSIDE**  
Homes

# CHAPEL GATE

Salisbury



ps pumping station  
 ss substation  
 v visitor space

2 bedroom homes

- The Hadleigh
- The Hadleigh 1.5
- The Flanders
- The Cartwright
- The Cooper

3 bedroom homes

- The Hickstead
- The Stoneleigh
- The Becket
- The Mylne

4 bedroom homes

- The Olympia
- The Pembroke

Pre-sold homes

- 1 bedroom homes
- 2 bedroom homes
- 3 bedroom homes
- 4 bedroom homes



This plan has been produced for home identification purposes only and may be subject to change. Please check the details of your chosen plot and house type with the sales consultant. Development layout plan correct at time of going to print.

Vistry Bristol region  
Linden House, The Jacobs Building, Berkeley Place, Clifton, Bristol BS8 1EX. Telephone: 01179 304 949

Produced by the Vistry Group Design Studio.

DS06706 / 03.24



**COUNTRYSIDE**  
Homes



# THE HADLEIGH

2 bedroom home



**COUNTRYSIDE**  
Homes

# THE HADLEIGH

2 bedroom home



## GROUND FLOOR

|                                 | metres      | feet / inches   |
|---------------------------------|-------------|-----------------|
| Kitchen / dining / sitting area | 7.48 x 4.35 | 24' 6" x 14' 3" |
| Bedroom 1                       | 4.38 x 2.98 | 14' 4" x 9' 9"  |
| Bedroom 2                       | 3.14 x 2.90 | 10' 3" x 9' 6"  |

|     |                       |       |                      |
|-----|-----------------------|-------|----------------------|
| ovn | oven                  | ffzs  | fridge freezer space |
| h   | hob                   | cup'd | cupboard             |
| ds  | dishwasher space      | ◀ ▶   | measuring points     |
| ws  | washing machine space |       |                      |

### The Hadleigh | Chapel Gate |

The floorplan has been produced for illustrative purposes only. Room sizes shown are between arrow points as indicated on plan. The dimensions have tolerances of + or -50mm and should not be used other than for general guidance. If specific dimensions are required, enquiries should be made to the sales consultant. The floor plans shown are not to scale. Measurements are based on the original drawings. Slight variations may occur during construction.

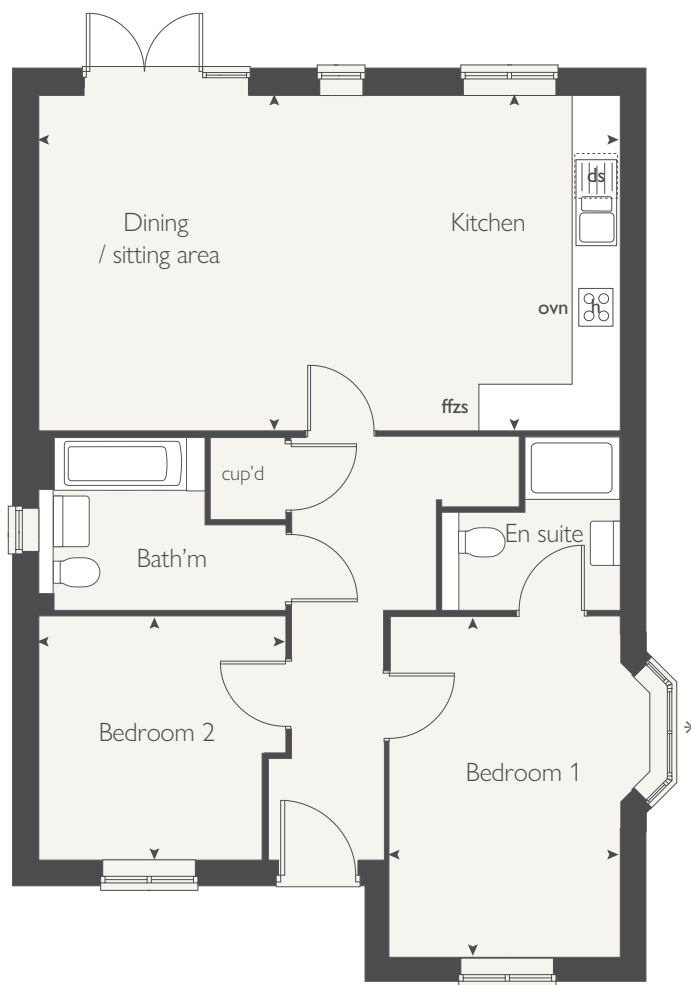
The illustrations shown are computer generated impressions of how the property may look and are indicative only. External details or finishes may vary on individual plots and homes may be built in either detached or attached styles depending on the development layout. Exact specifications, window styles and whether a property is left or right-handed may differ from plot to plot. Please speak to our sales consultant for specific plot details.

\* Bay window applies to selected plots only. Please speak to our sales consultant for further details.

Produced by the Vistry Group Design Studio.

DS06706 / 03.24

## GROUND FLOOR



**COUNTRYSIDE**  
Homes



# THE FLANDERS

2 bedroom home



**COUNTRYSIDE**  
Homes

# THE FLANDERS

2 bedroom home



| GROUND FLOOR          | metres      | feet / inches     |
|-----------------------|-------------|-------------------|
| Kitchen               | 3.64 x 3.03 | 11' 11" x 9' 11"  |
| Dining / sitting area | 4.66 x 3.33 | 15' 3" x 10' 11"  |
| Bedroom 1             | 4.22 x 3.61 | 13' 10" x 11' 10" |
| Bedroom 2             | 3.61 x 3.43 | 11' 10" x 11' 3"  |

|                          |                  |       |                      |
|--------------------------|------------------|-------|----------------------|
| ovn                      | oven             | ffzs  | fridge freezer space |
| h                        | hob              | cup'd | cupboard             |
| ds                       | dishwasher space | < >   | measuring points     |
| ws washing machine space |                  |       |                      |

## The Flanders | Chapel Gate |

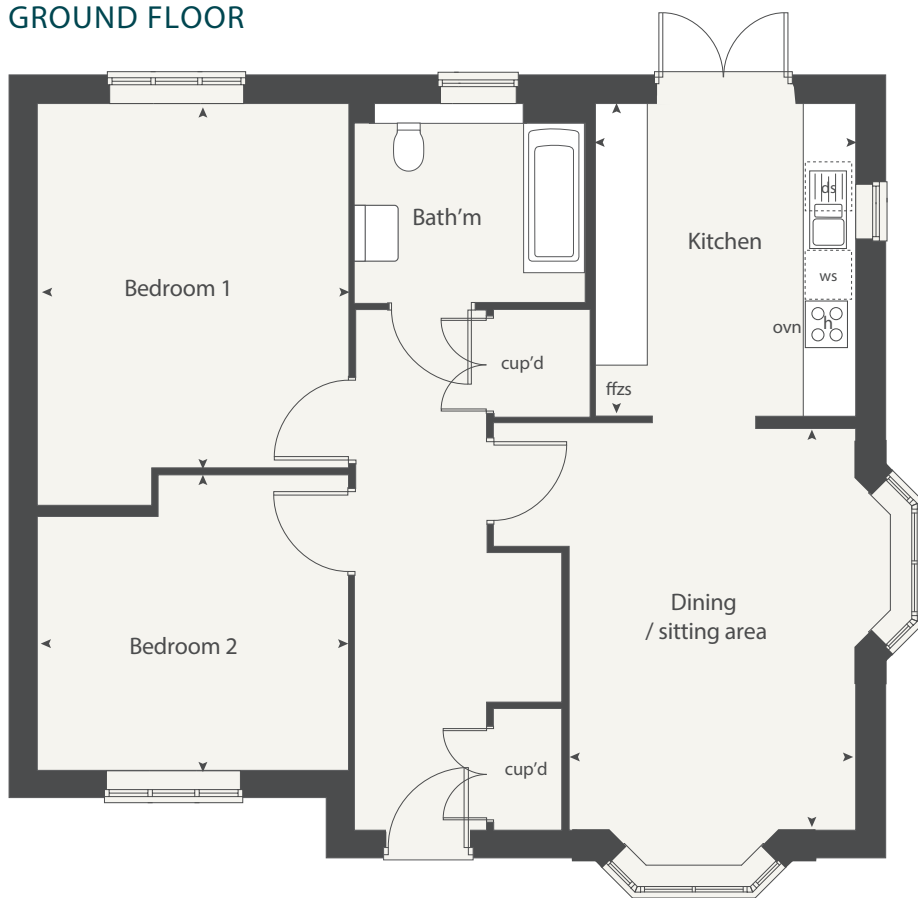
The floorplan has been produced for illustrative purposes only. Room sizes shown are between arrow points as indicated on plan. The dimensions have tolerances of + or -50mm and should not be used other than for general guidance. If specific dimensions are required, enquiries should be made to the sales consultant. The floor plans shown are not to scale. Measurements are based on the original drawings. Slight variations may occur during construction.

The illustrations shown are computer generated impressions of how the property may look and are indicative only. External details or finishes may vary on individual plots and homes may be built in either detached or attached styles depending on the development layout. Exact specifications, window styles and whether a property is left or right-handed may differ from plot to plot. Please speak to our sales consultant for specific plot details.

Produced by the Vistry Group Design Studio.

DS06706 / 03.24

## GROUND FLOOR



**COUNTRYSIDE**  
Homes





# THE CARTWRIGHT

2 bedroom home



**COUNTRYSIDE**  
Homes

# THE CARTWRIGHT

2 bedroom home



| GROUND FLOOR          | metres      | feet / inches    |
|-----------------------|-------------|------------------|
| Kitchen / dining area | 4.90 x 2.18 | 16' 0" x 7' 2"   |
| Living room           | 4.26 x 3.66 | 13' 11" x 12' 0" |

## FIRST FLOOR

|           |             |                   |
|-----------|-------------|-------------------|
| Bedroom 1 | 4.26 x 3.64 | 13' 11" x 11' 11" |
| Bedroom 2 | 4.26 x 2.86 | 13' 11" x 9' 4"   |

|     |                       |       |                      |
|-----|-----------------------|-------|----------------------|
| ovn | oven                  | ffzs  | fridge freezer space |
| h   | hob                   | cup'd | cupboard             |
| ds  | dishwasher space      | < >   | measuring points     |
| ws  | washing machine space |       |                      |

### The Cartwright | Chapel Gate |

The floorplan has been produced for illustrative purposes only. Room sizes shown are between arrow points as indicated on plan. The dimensions have tolerances of + or -50mm and should not be used other than for general guidance. If specific dimensions are required, enquiries should be made to the sales consultant. The floor plans shown are not to scale. Measurements are based on the original drawings. Slight variations may occur during construction.

The illustrations shown are computer generated impressions of how the property may look and are indicative only. External details or finishes may vary on individual plots and homes may be built in either detached or attached styles depending on the development layout. Exact specifications, window styles and whether a property is left or right-handed may differ from plot to plot. Please speak to our sales consultant for specific plot details.

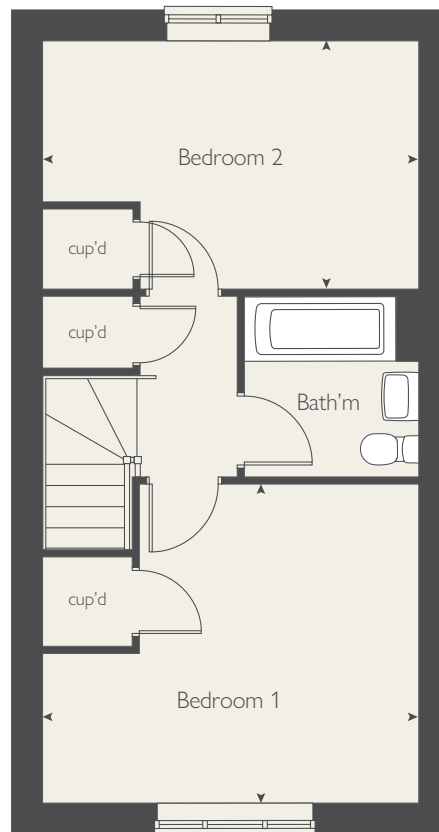
Produced by the Vistry Group Design Studio.

DS06706 / 03.24

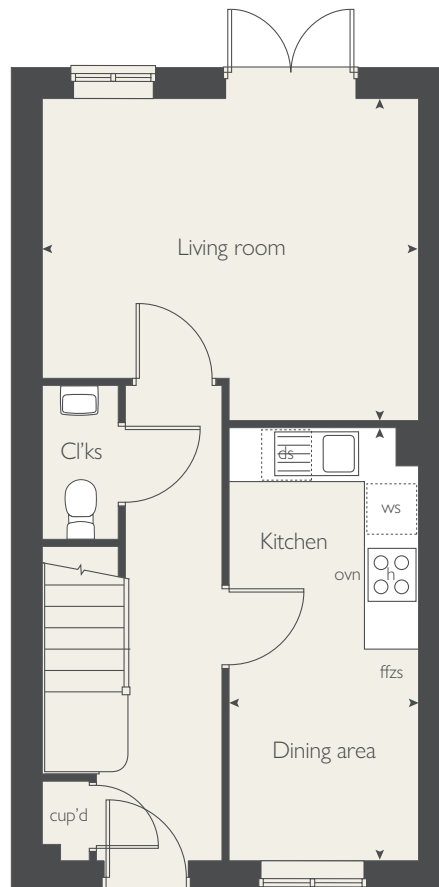


**COUNTRYSIDE**  
Homes

## FIRST FLOOR



## GROUND FLOOR





THE COOPER  
2 bedroom home



COUNTRYSIDE  
Homes

# THE COOPER

2 bedroom home



| GROUND FLOOR          | metres      | feet / inches   |
|-----------------------|-------------|-----------------|
| Kitchen / dining area | 5.01 x 2.83 | 16' 5" x 9' 3"  |
| Living room           | 4.99 x 3.04 | 16' 4" x 9' 11" |

## FIRST FLOOR

|           |             |                 |
|-----------|-------------|-----------------|
| Bedroom 1 | 4.99 x 3.09 | 16' 4" x 10' 1" |
| Bedroom 2 | 4.99 x 3.04 | 16' 4" x 9' 11" |

|     |                       |       |                      |
|-----|-----------------------|-------|----------------------|
| ovn | oven                  | ffzs  | fridge freezer space |
| h   | hob                   | cup'd | cupboard             |
| ds  | dishwasher space      | ◀ ▶   | measuring points     |
| ws  | washing machine space |       |                      |

### The Cooper | Chapel Gate |

The floorplan has been produced for illustrative purposes only. Room sizes shown are between arrow points as indicated on plan. The dimensions have tolerances of + or -50mm and should not be used other than for general guidance. If specific dimensions are required, enquiries should be made to the sales consultant. The floor plans shown are not to scale. Measurements are based on the original drawings. Slight variations may occur during construction.

The illustrations shown are computer generated impressions of how the property may look and are indicative only. External details or finishes may vary on individual plots and homes may be built in either detached or attached styles depending on the development layout. Exact specifications, window styles and whether a property is left or right-handed may differ from plot to plot. Please speak to our sales consultant for specific plot details.

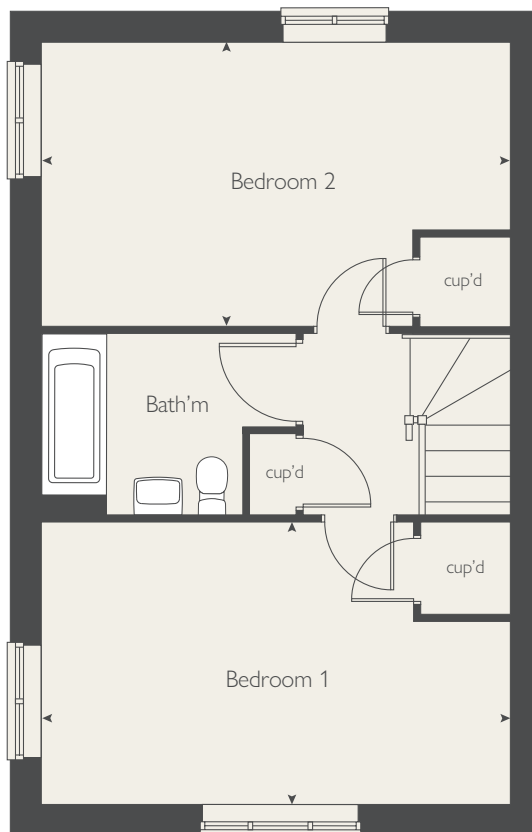
Produced by the Vistry Group Design Studio.

DS06706 / 03.24

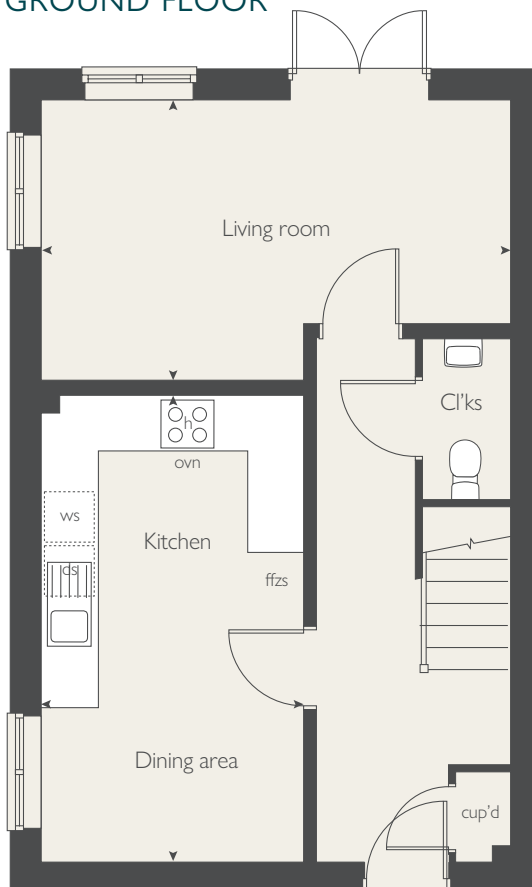


**COUNTRYSIDE**  
Homes

## FIRST FLOOR



## GROUND FLOOR





# THE HADLEIGH 1.5

3 bedroom home



# THE HADLEIGH 1.5

3 bedroom home



## GROUND FLOOR

|                                 | metres      | feet / inches   |
|---------------------------------|-------------|-----------------|
| Kitchen / dining / sitting area | 7.48 x 4.35 | 24' 6" x 14' 3" |
| Bedroom 2                       | 4.46 x 2.98 | 14' 7" x 9' 9"  |
| Bedroom 3                       | 3.14 x 2.90 | 10' 3" x 9' 6"  |

## FIRST FLOOR

|           | metres      | feet / inches   |
|-----------|-------------|-----------------|
| Bedroom 1 | 5.07 x 3.59 | 16' 7" x 11' 9" |
| Study     | 3.24 x 2.28 | 10' 7" x 7' 5"  |

|     |                       |       |                      |
|-----|-----------------------|-------|----------------------|
| ovn | oven                  | ffzs  | fridge freezer space |
| h   | hob                   | cup'd | cupboard             |
| ds  | dishwasher space      | ◀ ▶   | measuring points     |
| ws  | washing machine space |       |                      |

### The Hadleigh 1.5 | Chapel Gate |

The floorplan has been produced for illustrative purposes only. Room sizes shown are between arrow points as indicated on plan. The dimensions have tolerances of + or -50mm and should not be used other than for general guidance. If specific dimensions are required, enquiries should be made to the sales consultant. The floor plans shown are not to scale. Measurements are based on the original drawings. Slight variations may occur during construction.

The illustrations shown are computer generated impressions of how the property may look and are indicative only. External details or finishes may vary on individual plots and homes may be built in either detached or attached styles depending on the development layout. Exact specifications, window styles and whether a property is left or right-handed may differ from plot to plot. Please speak to our sales consultant for specific plot details.

Produced by the Vistry Group Design Studio.

DS06706 / 03.24

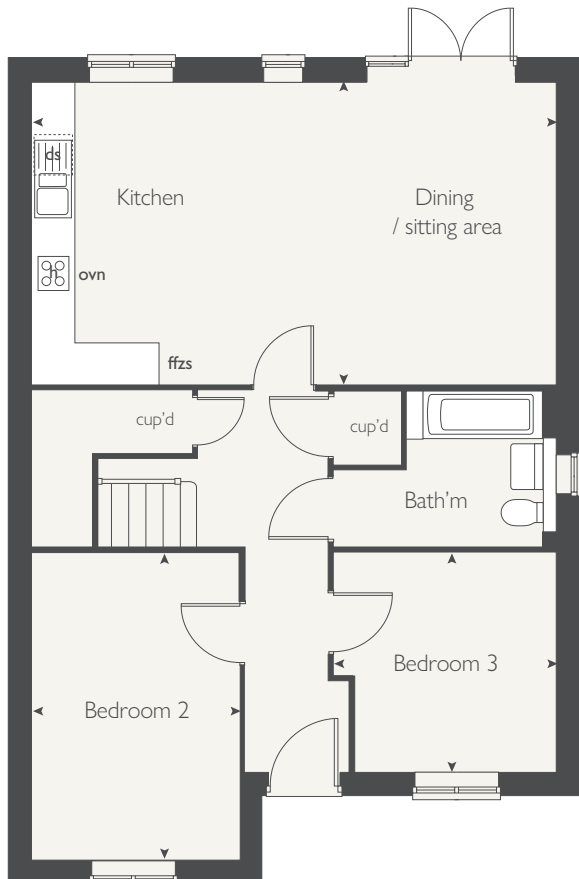


**COUNTRYSIDE**  
Homes

## FIRST FLOOR



## GROUND FLOOR





# THE HICKSTEAD

3 bedroom home



**COUNTRYSIDE**  
Homes

# THE HICKSTEAD

3 bedroom home



| GROUND FLOOR          | metres      | feet / inches   |
|-----------------------|-------------|-----------------|
| Kitchen / dining area | 5.57 x 3.40 | 18' 3" x 11' 1" |
| Sitting room          | 4.29 x 3.42 | 14' 0" x 11' 2" |

## FIRST FLOOR

|           |             |                 |
|-----------|-------------|-----------------|
| Bedroom 1 | 3.40 x 3.25 | 11' 2" x 10' 7" |
| Bedroom 2 | 3.46 x 3.24 | 11' 4" x 10' 7" |
| Bedroom 3 | 3.46 x 2.28 | 11' 4" x 7' 5"  |

|     |                       |       |                      |
|-----|-----------------------|-------|----------------------|
| ovn | oven                  | ffzs  | fridge freezer space |
| h   | hob                   | cup'd | cupboard             |
| ds  | dishwasher space      | w     | wardrobe             |
| ws  | washing machine space | < >   | measuring points     |

### The Hickstead | Chapel Gate |

The floorplan has been produced for illustrative purposes only. Room sizes shown are between arrow points as indicated on plan. The dimensions have tolerances of + or -50mm and should not be used other than for general guidance. If specific dimensions are required, enquiries should be made to the sales consultant. The floor plans shown are not to scale. Measurements are based on the original drawings. Slight variations may occur during construction.

The illustrations shown are computer generated impressions of how the property may look and are indicative only. External details or finishes may vary on individual plots and homes may be built in either detached or attached styles depending on the development layout. Exact specifications, window styles and whether a property is left or right-handed may differ from plot to plot. Please speak to our sales consultant for specific plot details.

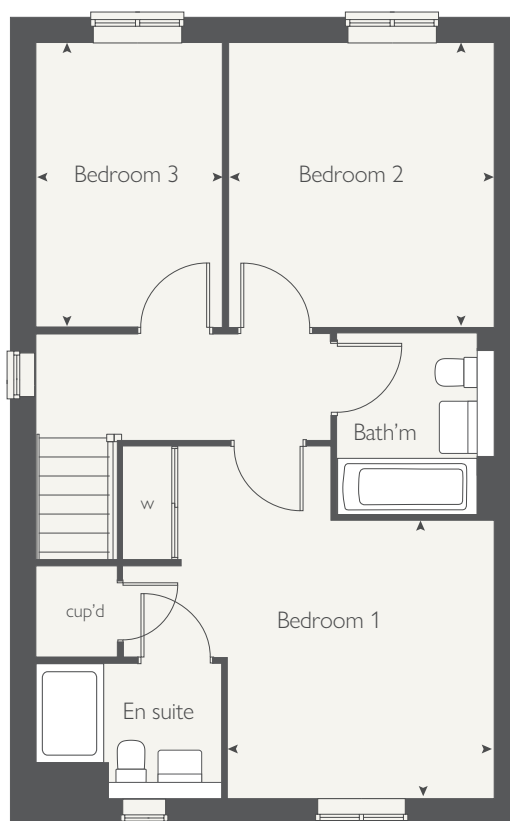
Produced by the Vistry Group Design Studio.

DS06706 / 03.24

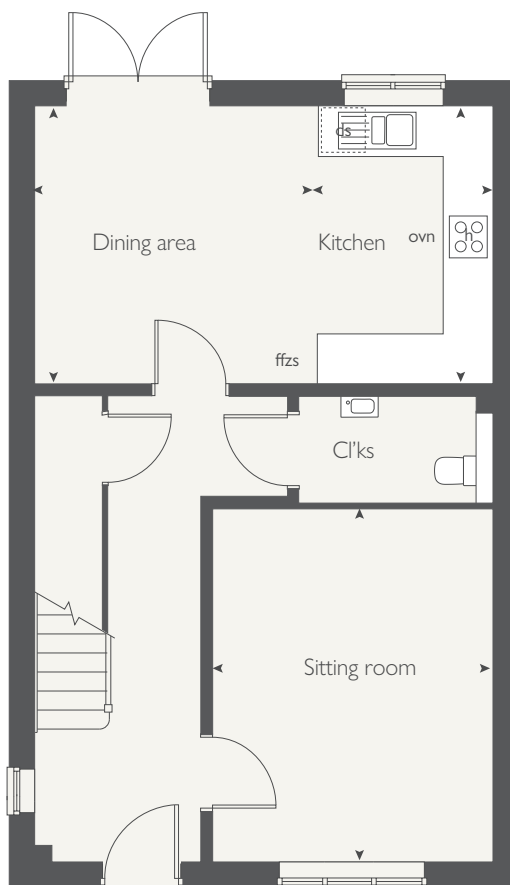


**COUNTRYSIDE**  
Homes

## FIRST FLOOR



## GROUND FLOOR







THE STONELEIGH  
3 bedroom home



COUNTRYSIDE  
Homes

[countrysidehomes.com](http://countrysidehomes.com)

# THE STONELEIGH

3 bedroom home



| GROUND FLOOR          | metres      | feet / inches    |
|-----------------------|-------------|------------------|
| Kitchen / dining area | 5.79 x 3.27 | 18' 11" x 10' 8" |
| Living room           | 5.10 x 3.20 | 16' 8" x 10' 6"  |
| Snug                  | 3.16 x 2.97 | 10' 4" x 9' 9"   |

## FIRST FLOOR

|           |             |                  |
|-----------|-------------|------------------|
| Bedroom 1 | 4.43 x 3.34 | 14' 6" x 10' 11" |
| Bedroom 2 | 5.01 x 2.96 | 16' 5" x 9' 8"   |
| Bedroom 3 | 3.27 x 2.75 | 10' 8" x 9' 0"   |

|     |                       |       |                  |
|-----|-----------------------|-------|------------------|
| ovn | oven                  | ffzr  | fridge freezer   |
| h   | hob                   | cup'd | cupboard         |
| ds  | dishwasher space      | < >   | measuring points |
| ws  | washing machine space |       |                  |

### The Stoneleigh | Chapel Gate |

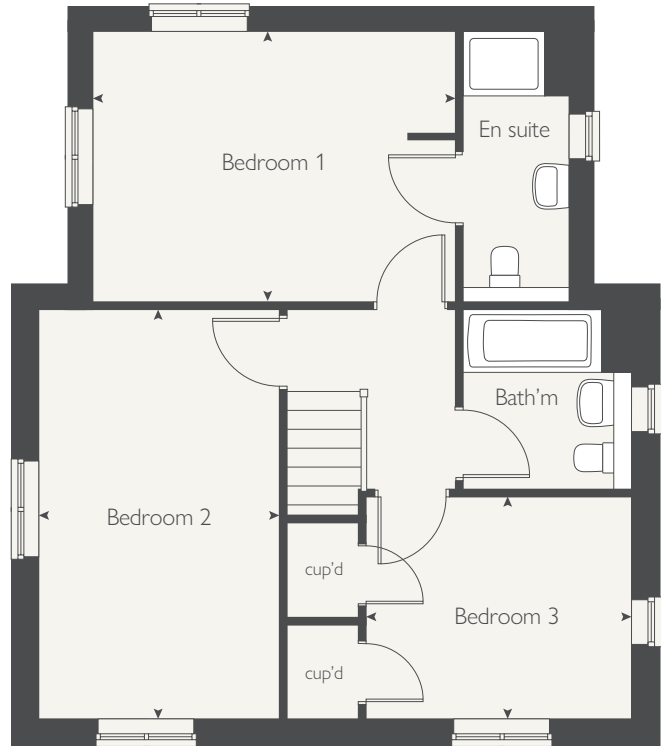
The floorplan has been produced for illustrative purposes only. Room sizes shown are between arrow points as indicated on plan. The dimensions have tolerances of + or -50mm and should not be used other than for general guidance. If specific dimensions are required, enquiries should be made to the sales consultant. The floor plans shown are not to scale. Measurements are based on the original drawings. Slight variations may occur during construction.

The illustrations shown are computer generated impressions of how the property may look and are indicative only. External details or finishes may vary on individual plots and homes may be built in either detached or attached styles depending on the development layout. Exact specifications, window styles and whether a property is left or right-handed may differ from plot to plot. Please speak to our sales consultant for specific plot details.

Produced by the Vistry Group Design Studio.

DS06706 / 03.24

## FIRST FLOOR



## GROUND FLOOR



**COUNTRYSIDE**  
Homes



THE BECKET  
3 bedroom home



COUNTRYSIDE  
Homes

# THE BECKET

3 bedroom home



| GROUND FLOOR          | metres      | feet / inches   |
|-----------------------|-------------|-----------------|
| Kitchen / dining area | 5.68 x 2.99 | 18' 7" x 9' 9"  |
| Living room           | 5.68 x 3.40 | 18' 7" x 11' 2" |

## FIRST FLOOR

|           |             |                 |
|-----------|-------------|-----------------|
| Bedroom 1 | 3.46 x 3.42 | 11' 4" x 11' 2" |
| Bedroom 2 | 3.43 x 3.06 | 11' 3" x 10' 0" |
| Bedroom 3 | 3.04 x 2.57 | 9' 11" x 8' 5"  |

|     |                       |       |                      |
|-----|-----------------------|-------|----------------------|
| ovn | oven                  | ffzs  | fridge freezer space |
| h   | hob                   | cup'd | cupboard             |
| ds  | dishwasher space      | ◀ ▶   | measuring points     |
| ws  | washing machine space |       |                      |

### The Becket | Chapel Gate |

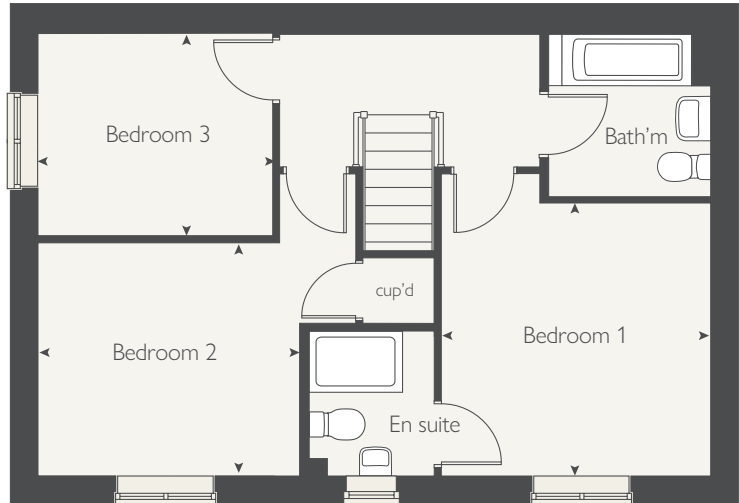
The floorplan has been produced for illustrative purposes only. Room sizes shown are between arrow points as indicated on plan. The dimensions have tolerances of + or -50mm and should not be used other than for general guidance. If specific dimensions are required, enquiries should be made to the sales consultant. The floor plans shown are not to scale. Measurements are based on the original drawings. Slight variations may occur during construction.

The illustrations shown are computer generated impressions of how the property may look and are indicative only. External details or finishes may vary on individual plots and homes may be built in either detached or attached styles depending on the development layout. Exact specifications, window styles and whether a property is left or right-handed may differ from plot to plot. Please speak to our sales consultant for specific plot details.

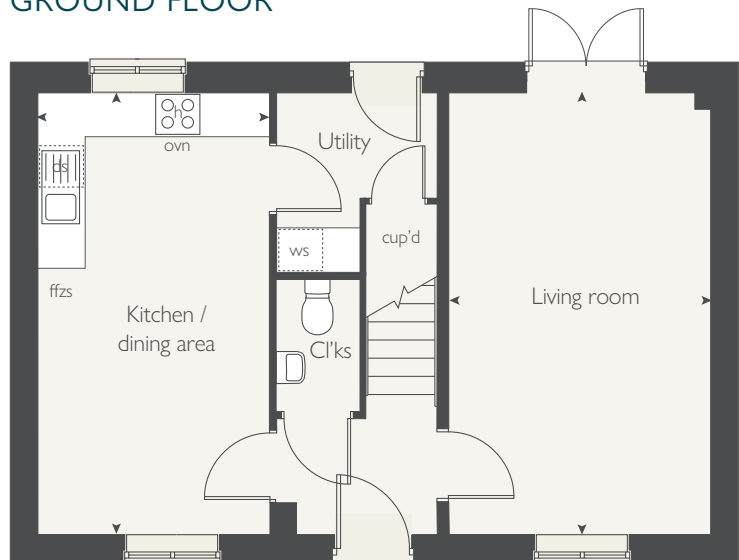
Produced by the Vistry Group Design Studio.

DS06706 / 05.24

## FIRST FLOOR



## GROUND FLOOR



**COUNTRYSIDE**  
Homes



THE MYLNE  
3 bedroom home

[countrysidehomes.com](http://countrysidehomes.com)



COUNTRYSIDE  
Homes

# THE MYLNE

## 3 bedroom home



| GROUND FLOOR          | metres      | feet / inches    |
|-----------------------|-------------|------------------|
| Kitchen / dining area | 6.13 x 3.87 | 20' 1" x 12' 8"  |
| Living room           | 4.86 x 3.50 | 15' 11" x 11' 6" |

### FIRST FLOOR

|           |             |                  |
|-----------|-------------|------------------|
| Bedroom 1 | 6.13 x 3.93 | 20' 1" x 12' 10" |
| Bedroom 2 | 3.34 x 2.65 | 10' 11" x 8' 8"  |
| Bedroom 3 | 3.43 x 2.27 | 11' 3" x 7' 5"   |

|     |                       |       |                  |
|-----|-----------------------|-------|------------------|
| ovn | oven                  | ffzr  | fridge freezer   |
| h   | hob                   | cup'd | cupboard         |
| ds  | dishwasher space      | ◀ ▶   | measuring points |
| ws  | washing machine space |       |                  |

### The Mylne | Chapel Gate |

The floorplan has been produced for illustrative purposes only. Room sizes shown are between arrow points as indicated on plan. The dimensions have tolerances of + or -50mm and should not be used other than for general guidance. If specific dimensions are required, enquiries should be made to the sales consultant. The floor plans shown are not to scale. Measurements are based on the original drawings. Slight variations may occur during construction.

The illustrations shown are computer generated impressions of how the property may look and are indicative only. External details or finishes may vary on individual plots and homes may be built in either detached or attached styles depending on the development layout. Exact specifications, window styles and whether a property is left or right-handed may differ from plot to plot. Please speak to our sales consultant for specific plot details.

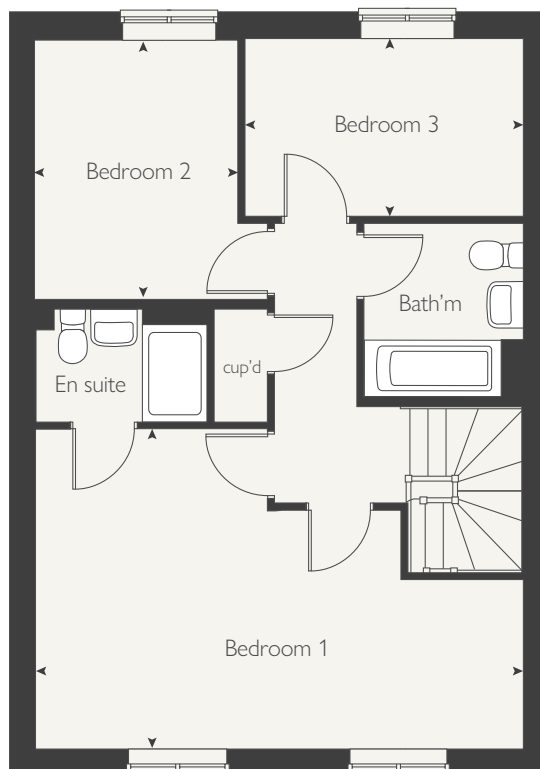
Produced by the Vistry Group Design Studio.

DS06706 / 03.24

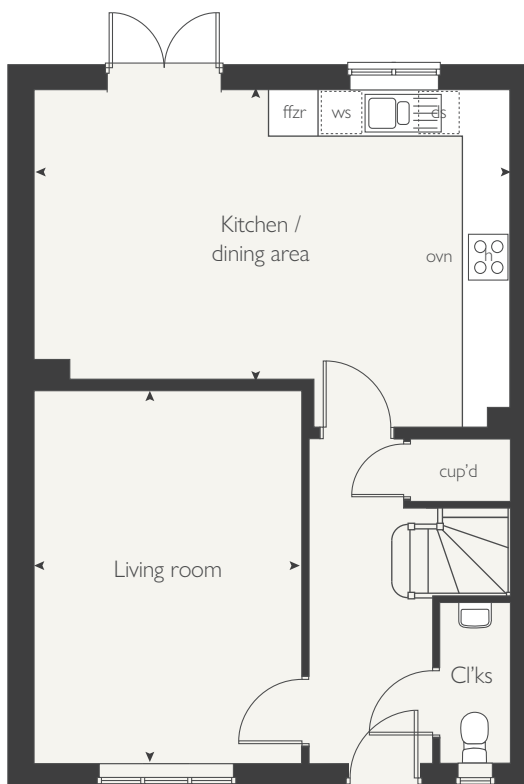


**COUNTRYSIDE**  
Homes

### FIRST FLOOR



### GROUND FLOOR





# THE OLYMPIA

4 bedroom home



**COUNTRYSIDE**  
Homes

# THE OLYMPIA

4 bedroom home



| GROUND FLOOR | metres      | feet / inches   |
|--------------|-------------|-----------------|
| Kitchen      | 4.33 x 2.81 | 14' 2" x 9' 2"  |
| Dining area  | 4.15 x 3.10 | 13' 7" x 10' 2" |
| Living room  | 5.91 x 3.12 | 19' 4" x 10' 2" |

## FIRST FLOOR

|           |             |                 |
|-----------|-------------|-----------------|
| Bedroom 1 | 4.39 x 3.17 | 14' 4" x 10' 4" |
| Bedroom 2 | 4.33 x 2.77 | 14' 2" x 9' 1"  |
| Bedroom 3 | 3.05 x 3.04 | 10' 0" x 9' 11" |
| Bedroom 4 | 3.05 x 2.81 | 10' 0" x 9' 2"  |

ovn oven      ffzs fridge freezer space  
 h hob      cup'd cupboard  
 ds dishwasher space      < > measuring points  
 ws washing machine space

### The Olympia | Chapel Gate |

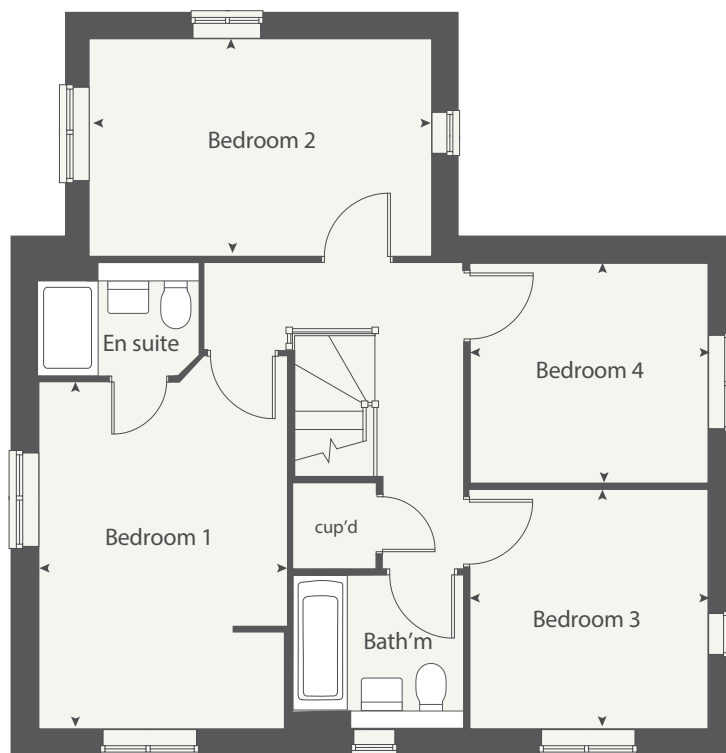
The floorplan has been produced for illustrative purposes only. Room sizes shown are between arrow points as indicated on plan. The dimensions have tolerances of + or -50mm and should not be used other than for general guidance. If specific dimensions are required, enquiries should be made to the sales consultant. The floor plans shown are not to scale. Measurements are based on the original drawings. Slight variations may occur during construction.

The illustrations shown are computer generated impressions of how the property may look and are indicative only. External details or finishes may vary on individual plots and homes may be built in either detached or attached styles depending on the development layout. Exact specifications, window styles and whether a property is left or right-handed may differ from plot to plot. Please speak to our sales consultant for specific plot details.

Produced by the Vistry Group Design Studio.

DS06706 / 03.24

## FIRST FLOOR



## GROUND FLOOR



**COUNTRYSIDE**  
Homes





# THE PEMBROKE

4 bedroom home



**COUNTRYSIDE**  
Homes

# THE PEMBROKE

4 bedroom home



| GROUND FLOOR          | metres      | feet / inches   |
|-----------------------|-------------|-----------------|
| Kitchen / dining area | 8.16 x 3.42 | 26' 9" x 11' 2" |
| Living room           | 4.90 x 3.56 | 16' 0" x 11' 8" |
| Study                 | 2.47 x 2.43 | 8' 1" x 7' 11"  |

## FIRST FLOOR

|           |             |                 |
|-----------|-------------|-----------------|
| Bedroom 1 | 4.35 x 3.46 | 14' 3" x 11' 4" |
| Bedroom 2 | 3.78 x 3.56 | 12' 4" x 11' 8" |
| Bedroom 3 | 3.41 x 2.94 | 11' 2" x 9' 7"  |
| Bedroom 4 | 3.98 x 2.88 | 13' 0" x 9' 5"  |

|     |                       |       |                      |
|-----|-----------------------|-------|----------------------|
| ovn | oven                  | ffzs  | fridge freezer space |
| h   | hob                   | ts    | tumble dryer space   |
| ds  | dishwasher space      | cup'd | cupboard             |
| ws  | washing machine space | < >   | measuring points     |

### The Pembroke | Chapel Gate |

The floorplan has been produced for illustrative purposes only. Room sizes shown are between arrow points as indicated on plan. The dimensions have tolerances of + or -50mm and should not be used other than for general guidance. If specific dimensions are required, enquiries should be made to the sales consultant. The floor plans shown are not to scale. Measurements are based on the original drawings. Slight variations may occur during construction.

The illustrations shown are computer generated impressions of how the property may look and are indicative only. External details or finishes may vary on individual plots and homes may be built in either detached or attached styles depending on the development layout. Exact specifications, window styles and whether a property is left or right-handed may differ from plot to plot. Please speak to our sales consultant for specific plot details.

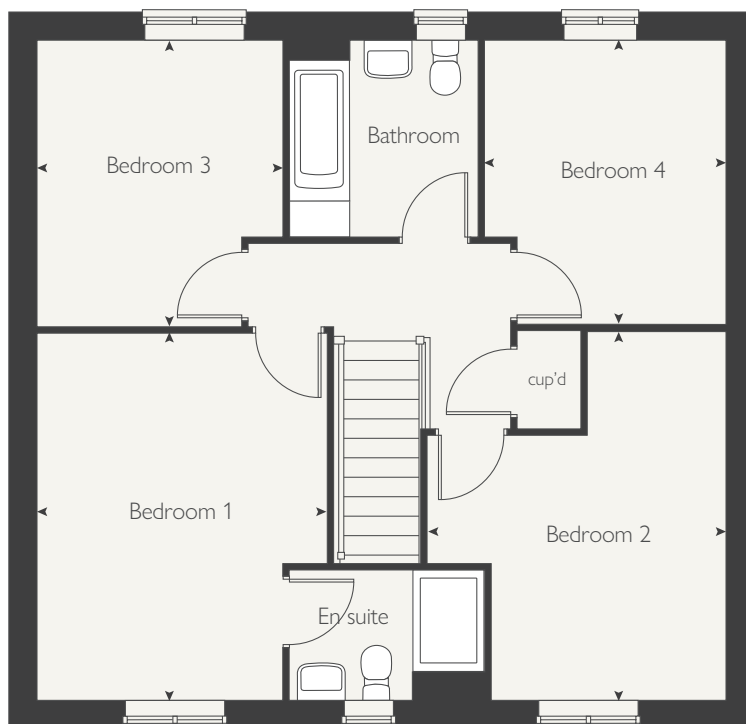
Produced by the Vistry Group Design Studio.

DS06706 / 03.24

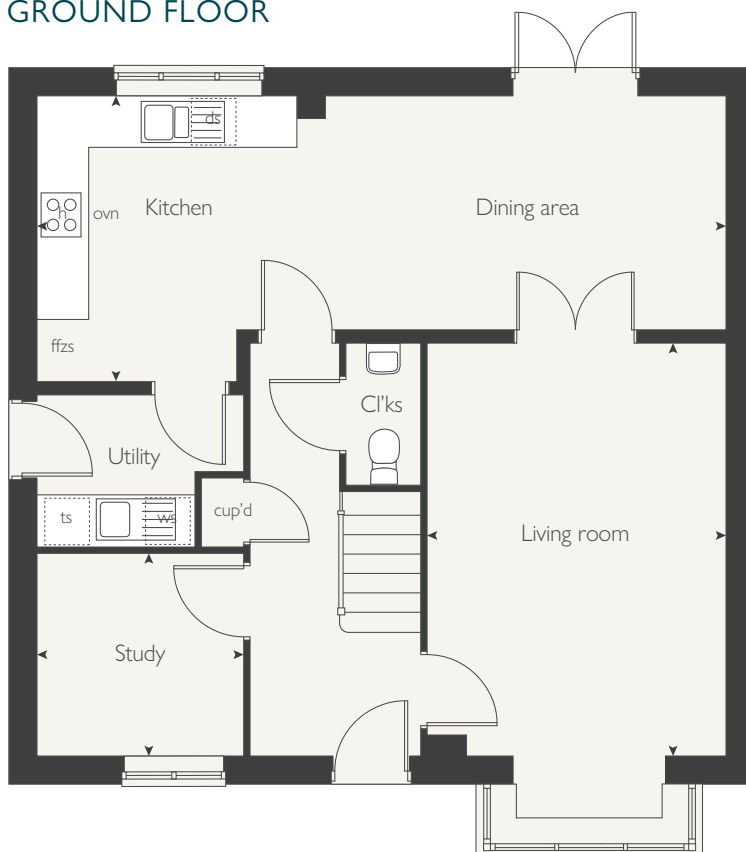


**COUNTRYSIDE**  
Homes

## FIRST FLOOR



## GROUND FLOOR





# CHAPEL GATE

Salisbury

# CHAPEL GATE

## Salisbury

Use this guide to see what features are included in your new home. Your sales consultant will be happy to discuss the Personalise range of extras available.



### KITCHEN

|   | 2 bedroom    |              |                |            | 3 bedroom        |               |                |            | 4 bedroom   |           |              |
|---|--------------|--------------|----------------|------------|------------------|---------------|----------------|------------|-------------|-----------|--------------|
|   | The Hadleigh | The Flanders | The Cartwright | The Cooper | The Hadleigh 1.5 | The Hickstead | The Stoneleigh | The Becket | The Olympia | The Mylne | The Pembroke |
| Choice of standard fitted kitchen (doors & worktops)  | ■            | ■            | ■              | ■          | ■                | ■             | ■              | ■          |             |           |              |
| Choice of premium fitted kitchen (doors & worktops)   |              |              |                |            |                  |               |                |            | ■           | ■         | ■            |
| Aga Rangemaster Elements Igneous one & half bowl sink   | ■            | ■            | ■              | ■          | ■                | ■             | ■              | ■          | ■           | ■         | ■            |
| Aga Rangemaster Monorise tap  | ■            | ■            | ■              | ■          | ■                | ■             | ■              | ■          | ■           | ■         | ■            |
| Hotpoint 4 burner hob   | ■            | ■            | ■              | ■          | ■                | ■             | ■              | ■          | ■           | ■         | ■            |
| Hotpoint hob (60cm) with built-in single underoven, with stainless steel splashback and curved glass chimney hood | ■            | ■            | ■              | ■          | ■                |               |                |            |             |           |              |
| Hotpoint hob (60cm) with built-in eye level unit double oven, with stainless steel splashback chimney hood        |              |              |                |            |                  | ■             | ■              | ■          | ■           | ■         | ■            |
| Down lighting above kitchen area and pendant light where applicable   | ■            | ■            | ■              | ■          | ■                | ■             | ■              | ■          | ■           | ■         | ■            |
| Fridge / freezer space  | ■            | ■            | ■              | ■          | ■                | ■             | ■              | ■          | ■           | ■         | ■            |
| Space for integrated dishwasher with plumbing and electrics   | ■            | ■            | ■              | ■          | ■                | ■             | ■              | ■          | ■           | ■         | ■            |
| Space for washing machine with plumbing and electrics in kitchen  |              | ■            | ■              |            | ■                |               | ■              |            |             | ■         |              |
| Space for washing machine with plumbing and electrics in utility  |              |              |                |            |                  |               | ■              |            | ■           |           | ■            |

### BATHROOMS AND EN SUITE(S)

|  |   |   |   |   |   |   |   |   |   |   |   |
|--|---|---|---|---|---|---|---|---|---|---|---|
| Tempo Arc contemporary white sanitaryware  | ■ | ■ | ■ | ■ | ■ | ■ | ■ | ■ | ■ | ■ | ■ |
| Ideal I Life contemporary white soft close WC  | ■ | ■ | ■ | ■ | ■ | ■ | ■ | ■ | ■ | ■ | ■ |
| Shower over the bath (full height tiling to length and side of bath)   | ■ | ■ | ■ | ■ | ■ | ■ | ■ | ■ | ■ | ■ | ■ |
| JustTrays shower tray with glass enclosure to bedroom 1 en suite   | ■ |   |   |   | ■ | ■ | ■ | ■ | ■ | ■ | ■ |
| Choice of standard Porcelanosa wall tiling (splashback, full height over bath, and full-height to shower cubicle)* | ■ | ■ | ■ | ■ | ■ | ■ | ■ | ■ | ■ | ■ | ■ |
| Chrome bezel LED dome light fitting to bathroom and en suite(s)  | ■ | ■ | ■ | ■ | ■ | ■ | ■ | ■ | ■ | ■ | ■ |
| Shaver points in bathroom & en suite(s)  | ■ | ■ | ■ | ■ | ■ | ■ | ■ | ■ | ■ | ■ | ■ |
| White towel warmer in bathroom and en suite(s)   | ■ | ■ | ■ | ■ | ■ | ■ | ■ | ■ | ■ | ■ | ■ |

### DOORS AND WINDOWS

|   | 2 bedroom    |              |                |            | 3 bedroom        |               |                |            | 4 bedroom   |           |              |
|---|--------------|--------------|----------------|------------|------------------|---------------|----------------|------------|-------------|-----------|--------------|
|   | The Hadleigh | The Flanders | The Cartwright | The Cooper | The Hadleigh 1.5 | The Hickstead | The Stoneleigh | The Becket | The Olympia | The Mylne | The Pembroke |
| Front door with three-point security locking system and security chain          | ■            | ■            | ■              | ■          | ■                | ■             | ■              | ■          | ■           | ■         | ■            |
| Chrome plated front door numerals   | ■            | ■            | ■              | ■          | ■                | ■             | ■              | ■          | ■           | ■         | ■            |
| PVCu double glazing to windows  | ■            | ■            | ■              | ■          | ■                | ■             | ■              | ■          | ■           | ■         | ■            |
| Double glazed PVCu French doors with three point locking system                 | ■            | ■            | ■              | ■          | ■                | ■             | ■              | ■          | ■           | ■         | ■            |
| Internal Prefinished Oak Cottage style doors with Brass Satin finish handles    | ■            | ■            | ■              | ■          | ■                | ■             | ■              | ■          | ■           | ■         | ■            |
| Paving outside French door and path to garage personnel door (where applicable) | ■            | ■            | ■              | ■          | ■                | ■             | ■              | ■          | ■           | ■         | ■            |

### GENERAL

|   |   |   |   |   |   |   |   |   |   |   |   |
|---|---|---|---|---|---|---|---|---|---|---|---|
| White painted walls and smooth white ceilings   | ■ | ■ | ■ | ■ | ■ | ■ | ■ | ■ | ■ | ■ | ■ |
| Combined usb/double sockets in kitchen, living room and bedroom(s)                                  | ■ | ■ | ■ | ■ | ■ | ■ | ■ | ■ | ■ | ■ | ■ |
| Multi-media point in living room  | ■ | ■ | ■ | ■ | ■ | ■ | ■ | ■ | ■ | ■ | ■ |
| TV point to bedroom 1 and family room (where applicable)  | ■ | ■ | ■ | ■ | ■ | ■ | ■ | ■ | ■ | ■ | ■ |
| Master telephone socket to lounge and study where applicable  | ■ | ■ | ■ | ■ | ■ | ■ | ■ | ■ | ■ | ■ | ■ |
| Gas central heating with wall mounted combi-boiler, programme selector and room thermostat(s)       | ■ | ■ | ■ | ■ | ■ | ■ | ■ | ■ | ■ | ■ | ■ |
| Hive control and hub for energy efficient heating control   | ■ | ■ | ■ | ■ | ■ | ■ | ■ | ■ | ■ | ■ | ■ |
| Thermostatic valves to all radiators (with the exception of rooms with separate thermostat control) | ■ | ■ | ■ | ■ | ■ | ■ | ■ | ■ | ■ | ■ | ■ |
| Car charging points   | ■ | ■ | ■ | ■ | ■ | ■ | ■ | ■ | ■ | ■ | ■ |
| PV solar panels   | ■ | ■ | ■ | ■ | ■ | ■ | ■ | ■ | ■ | ■ | ■ |
| Fitted external tap   | ■ | ■ | ■ | ■ | ■ | ■ | ■ | ■ | ■ | ■ | ■ |
| Fitted door bell  |   |   |   |   |   |   |   |   |   |   |   |
| External light fitted to front porch and wiring for external light to rear door                     | ■ | ■ | ■ | ■ | ■ | ■ | ■ | ■ | ■ | ■ | ■ |
| Mains wired smoke detectors with battery back-up  | ■ | ■ | ■ | ■ | ■ | ■ | ■ | ■ | ■ | ■ | ■ |
| Battery powered Carbon Monoxide detector (wall mounted) to be provided, located next to boiler      | ■ | ■ | ■ | ■ | ■ | ■ | ■ | ■ | ■ | ■ | ■ |
| Power and lighting to 'on plot' garage (where applicable)   | ■ | ■ | ■ | ■ | ■ | ■ | ■ | ■ | ■ | ■ | ■ |
| Enclosed fenced rear garden, and garden gate (where applicable)                                     | ■ | ■ | ■ | ■ | ■ | ■ | ■ | ■ | ■ | ■ | ■ |
| Landscaped front gardens  | ■ | ■ | ■ | ■ | ■ | ■ | ■ | ■ | ■ | ■ | ■ |
| NHBC Buildmark cover  | ■ | ■ | ■ | ■ | ■ | ■ | ■ | ■ | ■ | ■ | ■ |
| First two years' customer service support from Countryside Homes                                    | ■ | ■ | ■ | ■ | ■ | ■ | ■ | ■ | ■ | ■ | ■ |

■ Fitted as standard - included in the property  
\* Subject to stage of construction

# SO MUCH CHOICE...

Part of the excitement of buying a new home is the thrill of being the first person to live in the property and having a brand new contemporary kitchen and modern bathroom. Our premium brand partners ensure that all of our fixtures and fittings comply with the latest Government building regulations and only branded appliances are installed in your new home.

Once you know what specification comes included, you'll have a choice from our specially selected tiles for your kitchen and bathrooms, as well as kitchen worktops and cupboard doors. You can then use the Countryside Homes Personalise brochure to add the finishing touches to your home to make it extra special for you!

From personalising your bathrooms with stunning ceramics, or adding smooth sliding wardrobes to your main bedroom, there are a wide range of additional options and upgrades available.

The availability of items is subject to the stage of build, and can vary by development and house type. Our sales consultants will be happy to provide guidance.



The specification shown in this leaflet is correct at the time of going to press. Countryside Homes is continually reviewing and updating the specification on all housetypes and therefore reserves the right to change specification details. Photographs depict a typical Countryside Homes interior and may include optional upgrades. For full details regarding current specification and finishes, for the plots you are interested in, please refer to our sales consultant.

Produced by the Vistry Group Design Studio.

DS06706 / 04.24



**COUNTRYSIDE**  
Homes