

THE ROWAN

PLOTS 275, 286, 296, 299, 306, 309, 317, 392, 396, 400, 404 & 480



St. Michael's Hurst

BISHOP'S STORTFORD

4 bedroom house

Natural light floods the well-appointed, four-bedroom Rowan, a home of which you're sure to feel proud. The stand-alone living room will offer a calm space in which to relax, while the open plan kitchen/dining area will be the hub of daily family life. The study is perfect for those working remotely, or for young people catching up on their homework.

////// ParadigmLiving



COUNTRYSIDE
Homes

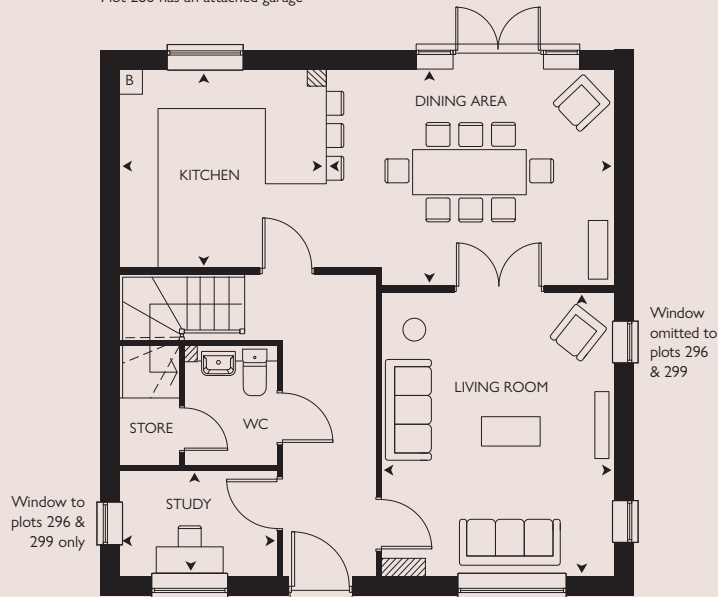
Computer generated image of The Rowan plot 299. Building materials, design and landscaping may differ from those illustrated. We operate a policy of continual product development and individual features may vary. Please ask a Sales Consultant for further details. July 2023.

THE ROWAN

PLOTS 275, 286, 296, 299, 306, 309, 317, 392, 396*, 400, 404 & 480

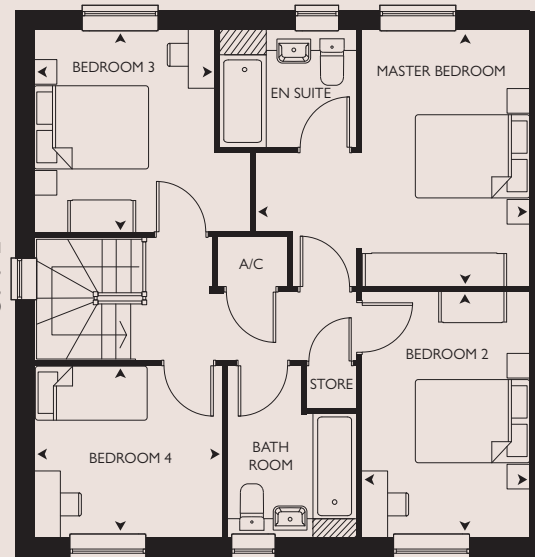
4 bedroom house

Plot 286 has an attached garage



GROUND FLOOR

Window omitted to plots 286, 296, 299, 306, 317, 392, 404 & 480



FIRST FLOOR



St. Michael's Hurst

BISHOP'S STORTFORD

GROUND FLOOR

KITCHEN
3.40m x 3.23m 11'2" x 10'7"

DINING AREA
4.71m x 3.53m 15'5" x 11'7"

LIVING ROOM
4.65m x 3.78m 15'3" x 12'4"

STUDY
2.58m x 1.71m 8'5" x 5'7"

FIRST FLOOR

MASTER BEDROOM
4.50m x 4.20m 14'9" x 13'9"

BEDROOM 2
4.03m x 2.75m 13'2" x 9'0"

BEDROOM 3
3.51m x 3.29m 11'6" x 10'9"

BEDROOM 4
3.02m x 2.82m 9'11" x 9'3"

OVERALL INTERNAL AREA

135.2 sq m 1455 sq ft

* = Handed Plot B = Boiler A/C = Airing cupboard

All room sizes are approximate with maximum dimensions which have been taken into the kitchen units and are not intended for carpet sizes or items of furniture. All dimensions and areas listed are to finished measurements. Countryside operates a policy of continuous product development and all room layouts may be subject to minor modifications. Kitchen, bathroom and furniture layouts shown are indicative only. Please ask Sales Consultants for detailed information regarding specific properties.