

THE ORWELL

PLOTS 277, 284, 289, 297, 300, 319, 393 & 460



St. Michael's Hurst

BISHOP'S STORTFORD

4 bedroom house

Set in a pleasing L-shape, the Orwell is a striking four-bedroom family home. Both the kitchen and the living room feature doors opening out onto the garden, while a useful utility room has been included to help with busy day-to-day life. All four bedrooms upstairs are well-proportioned, which makes the property perfect for entertaining visitors.

////// ParadigmLiving



COUNTRYSIDE
Homes

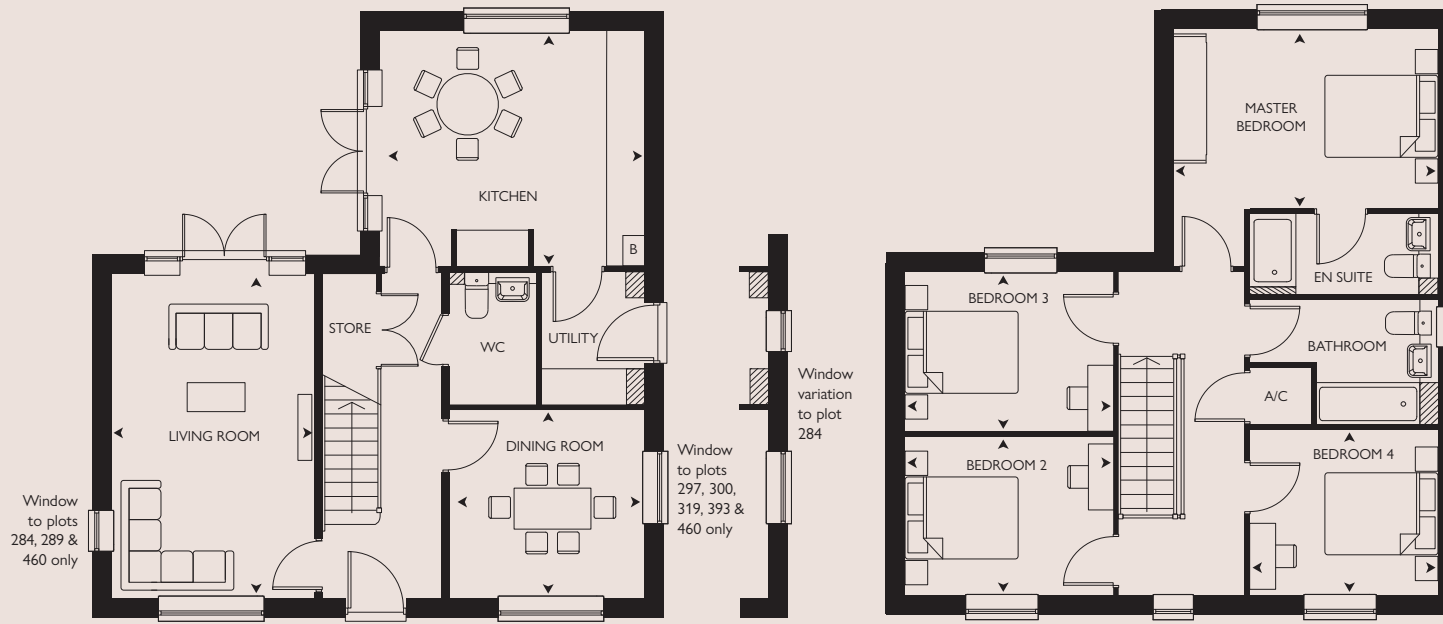
Computer generated image of The Orwell plot 319. Building materials, design and landscaping may differ from those illustrated. We operate a policy of continual product development and individual features may vary. Please ask a Sales Consultant for further details. July 2023.

THE ORWELL

PLOTS 277*, 284, 289, 297, 300*, 319*, 393 & 460

4 bedroom house

Plot 277 has an attached garage



GROUND FLOOR

FIRST FLOOR

* = Handed Plot B = Boiler A/C = Airing cupboard

All room sizes are approximate with maximum dimensions which have been taken into the kitchen units and are not intended for carpet sizes or items of furniture. All dimensions and areas listed are to finished measurements. Countryside operates a policy of continuous product development and all room layouts may be subject to minor modifications. Kitchen, bathroom and furniture layouts shown are indicative only. Please ask Sales Consultants for detailed information regarding specific properties.



St. Michael's Hurst

BISHOP'S STORTFORD

GROUND FLOOR

KITCHEN
4.28m x 3.91m 14'0" x 12'0"

DINING ROOM
3.12m x 3.13m 10'3" x 10'2"

LIVING ROOM
5.39m x 3.38m 17'8" x 11'1"

FIRST FLOOR

MASTER BEDROOM
4.28m x 3.97m 14'0" x 13'0"

BEDROOM 2
3.55m x 2.60m 11'7" x 8'8"

BEDROOM 3
3.55m x 2.60m 11'7" x 8'8"

BEDROOM 4
3.12m x 2.68m 10'2" x 8'9"

OVERALL INTERNAL AREA

131.6 sq m 1416 sq ft