

THE BURLEY

PLOTS 292, 293, 310, 311, 312, 313, 471, 476, 477 & 478



St. Michael's Hurst

BISHOP'S STORTFORD

3 bedroom house

The heart of this three bedroom home is its open plan living space to the ground floor. With ample preparation space, the kitchen offers the chef of the house the ideal spot to cook up a storm, while the living room and dining area are perfect both for entertaining and relaxing. The master bedroom boasts its own stylish en suite bathroom.

ParadigmLiving



COUNTRYSIDE
Homes

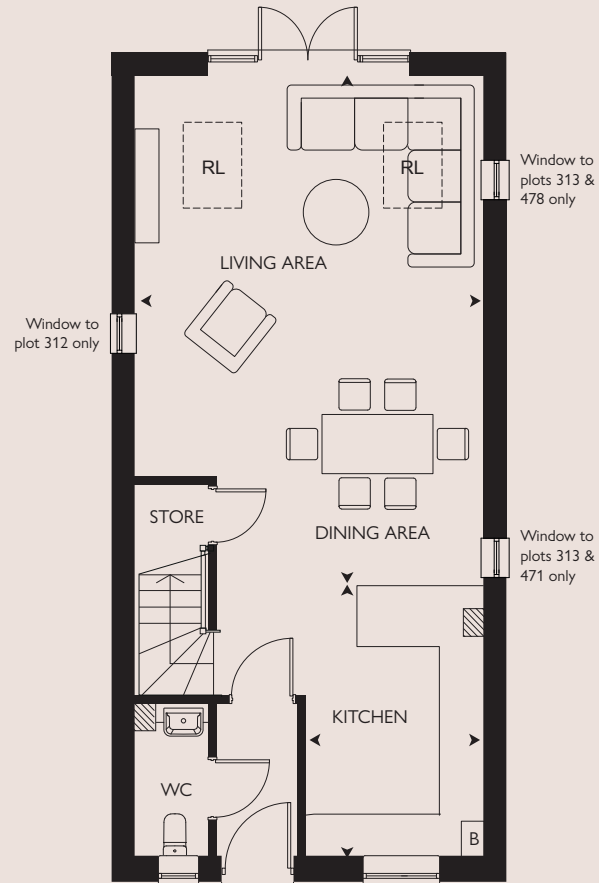
Computer generated image of The Burley plot 313. Building materials, design and landscaping may differ from those illustrated. We operate a policy of continual product development and individual features may vary. Please ask a Sales Consultant for further details. April 2023.

THE BURLEY

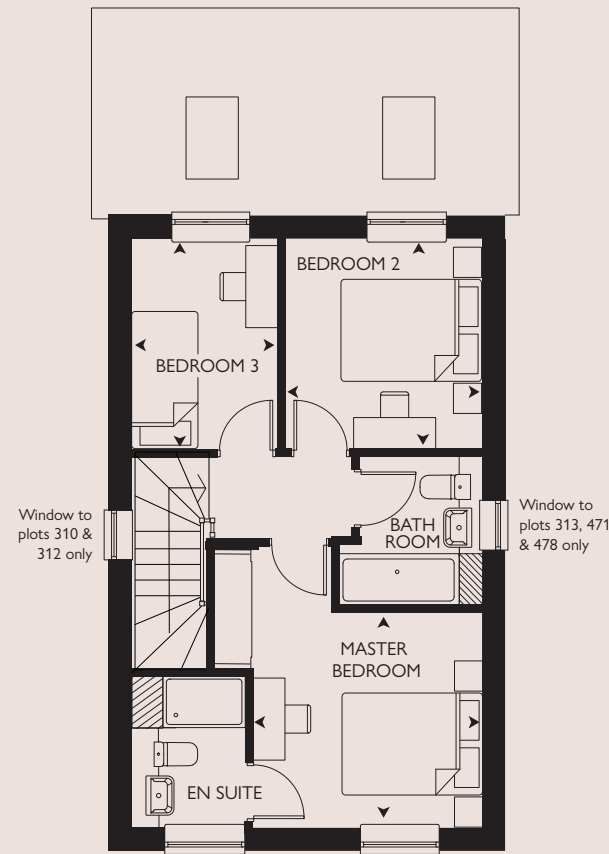
PLOTS 292, 293*, 310, 311, 312*, 313*, 471, 476, 477 & 478

3 bedroom house

Plot 313 has a car port
Plot 476 has a garage



GROUND FLOOR



FIRST FLOOR

* = Handed Plot B = Boiler RL = Roof light

All room sizes are approximate with maximum dimensions which have been taken into the kitchen units and are not intended for carpet sizes or items of furniture. All dimensions and areas listed are to finished measurements. Countryside operates a policy of continuous product development and all room layouts may be subject to minor modifications. Kitchen, bathroom and furniture layouts shown are indicative only. Please ask Sales Consultants for detailed information regarding specific properties.



St. Michael's Hurst

BISHOP'S STORTFORD

GROUND FLOOR

KITCHEN
3.86m x 2.55m 12'7" x 8'4"

LIVING / DINING AREA
7.28m x 4.95m 23'11" x 16'2"

FIRST FLOOR

MASTER BEDROOM
3.27m x 3.11m 13'4" x 12'5"

BEDROOM 2
3.00m x 2.78m 10'9" x 10'2"

BEDROOM 3
3.00m x 2.07m 9'10" x 6'9"

OVERALL INTERNAL AREA

97 sq m 1044 sq ft