

COUNTRYSIDE AT



TATTENHOE PARK

MILTON KEYNES



Computer generated image of The Robin, plot 290

THE ROBIN 3 bedroom, 2 storey house

Plots 5, 116, 138, 139, 144, 145, 171, 173, 175, 232, 255,
280, 283, 290, 294, 297, 298, 304, 307, 310, 312 & 316

The Robin is the epitome of the phrase "kerb appeal" thanks to its eye-catching design. Care has been taken to ensure that the home is bright and airy, nowhere more so than in the kitchen/dining room, which features beautiful sky lights and doors leading out to the garden.



COUNTRYSIDE

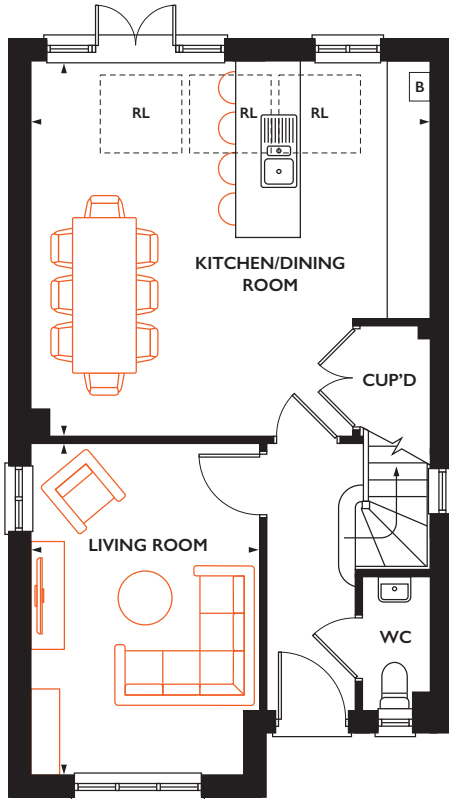
Places People Love



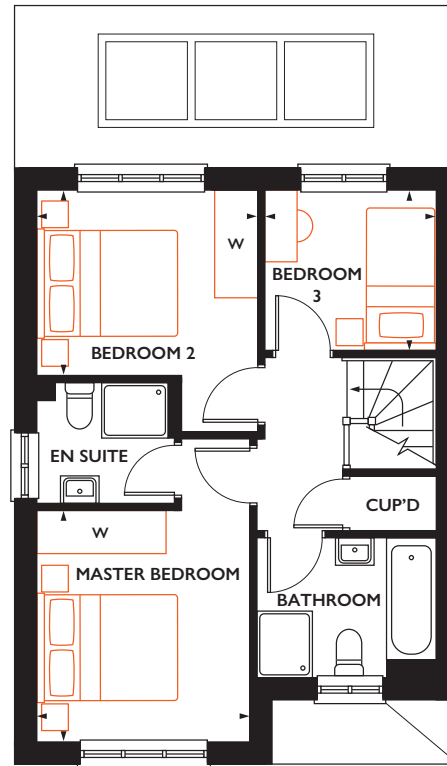
THE ROBIN

Total internal area 93 sq.m 1012 sq.ft

Plots 5, 116*, 138, 139, 144*, 145*, 171, 173*, 175, 232*, 255*, 280*, 283*, 290, 294, 297, 298, 304*, 307*, 310*, 312* & 316



Ground floor



First floor

Ground floor

KITCHEN/DINING ROOM

5.56m x 5.22m 18' 3" x 17' 2"

LIVING ROOM

4.60m x 3.18m 10' 5" x 15' 1"

First floor

MASTER BEDROOM

3.23m x 2.97m 10' 7" x 9' 9"

BEDROOM 2

3.08m x 2.58m 10' 1" x 8' 6"

BEDROOM 3

2.37m x 2.23m 7' 10" x 7' 4"

* Handed plot B = Boiler (location is indicative) RL = Roof light W = Space for a wardrobe

All room sizes are approximate with maximum dimensions which have been taken into the kitchen units and are not intended for carpet sizes or items of furniture. All dimensions and areas listed are to finished measurements. Countryside operates a policy of continuous product development and all room layouts may be subject to minor modifications. Kitchen, bathroom and furniture layouts shown are indicative only. Computer generated images are indicative only and can be subject to change. Images are often shown from an imaginary open space area and variations to the external design and landscaping may occur. Please ask Sales Consultants for detailed information regarding specific properties. January 2022.



countryside.tattenhoe.com

