



Computer generated image of The Turnstone plot 20

The Turnstone

Plots 16, 20, 22, 27 & 30
4 bedroom, 2 storey house

A generous entrance hall welcomes you at the charming Turnstone, leading to an open plan kitchen diner and a cosy standalone living room, as well as a convenient utility room. The garage is pleasingly set back from the front of the home, affording you an extra parking space in front. Four bedrooms and two bathrooms make up the layout on the first floor.



COUNTRYSIDE AT



The Turnstone

Plots 16, 20, 22, 27 & 30*

Total internal area: 122.7 sq m / 1321 sq ft

Ground Floor

KITCHEN/DINING AREA
6.43m x 4.35m 21' 2" x 14' 3"

LIVING ROOM
4.97m x 3.34m 16' 4" x 11' 0"

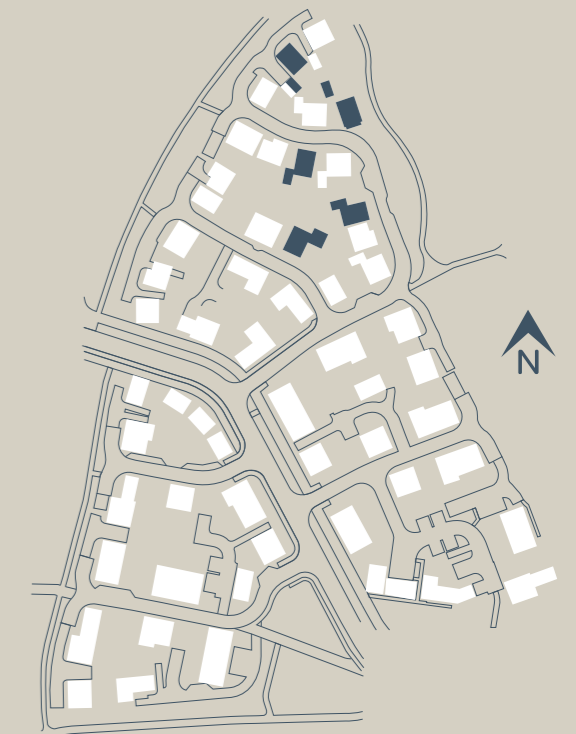
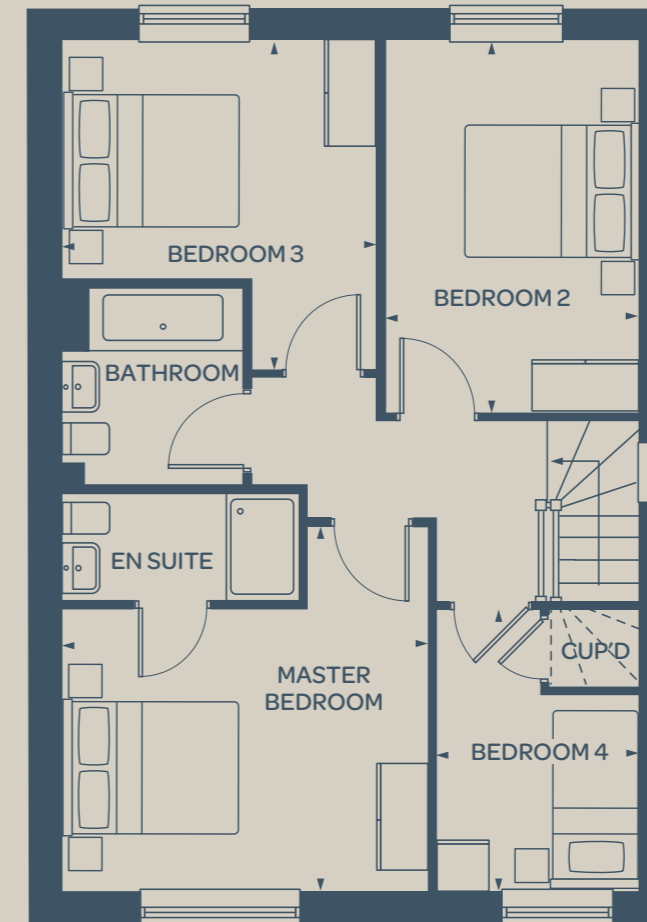
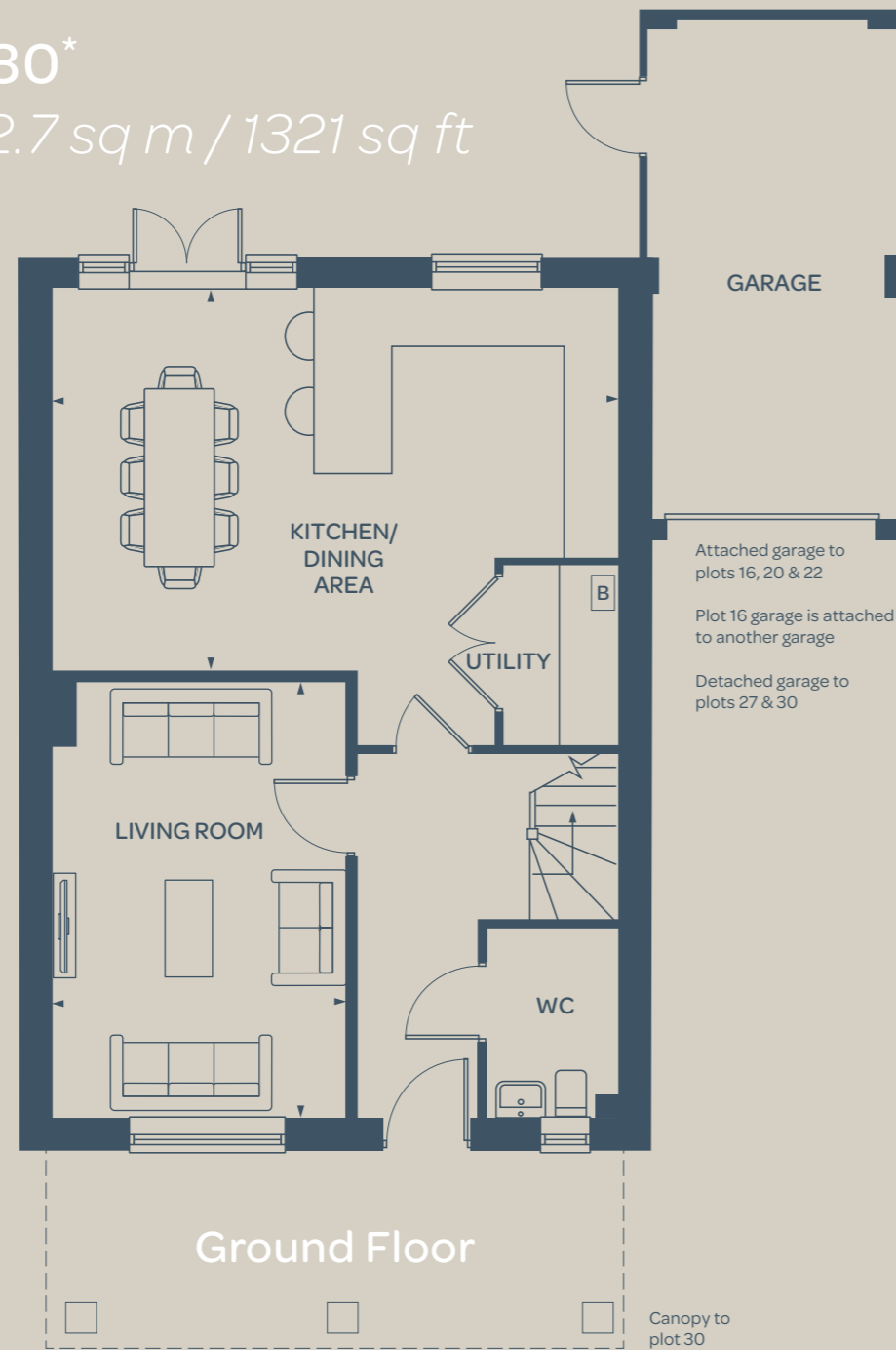
First Floor

MASTER BEDROOM
4.09m x 4.06m 13' 5" x 13' 4"

BEDROOM 2
4.14m x 2.82m 13' 7" x 9' 3"

BEDROOM 3
3.51m x 2.64m 11' 6" x 8' 8"

BEDROOM 4
3.13m x 2.25m 10' 3" x 7' 5"



* Handed plot B = Boiler (location is indicative)

The floorplan has been produced for illustrative purposes only. Room sizes shown are between arrow points as indicated on plan. The dimensions have tolerances of + or -50mm and should not be used other than for general guidance. If specific dimensions are required, enquiries should be made to the sales consultant. The floor plans shown are not to scale. Measurements are based on the original drawings. Slight variations may occur during construction. Kitchen and bathroom layouts shown and furniture positions are indicative only.

The illustrations shown are computer generated impressions of how the property may look and are indicative only. External details or finishes may vary on individual plots and homes may be built in either detached or attached styles depending on the development layout. Exact specifications, window styles and whether a property is left or right handed may differ from plot to plot. Please speak to our sales consultant for specific plot details.