



Computer generated image of The Silver Birch plot 7

The Silver Birch

Plot 7

3 bedroom, 2 storey house

The living/dining area of the Silver Birch is simply flooded with natural light thanks to two sets of double doors opening out onto the rear garden. There is also an abundance of storage options on both floors, which will help to keep the home streamlined. The kitchen at the front of the house enjoys ample preparation space.



COUNTRYSIDE AT



The Silver Birch

Plot 7

Total internal area:
124.5 sq m / 1339.9 sq ft

Ground Floor

KITCHEN
3.07m x 2.83m 10' 1" x 9' 4"

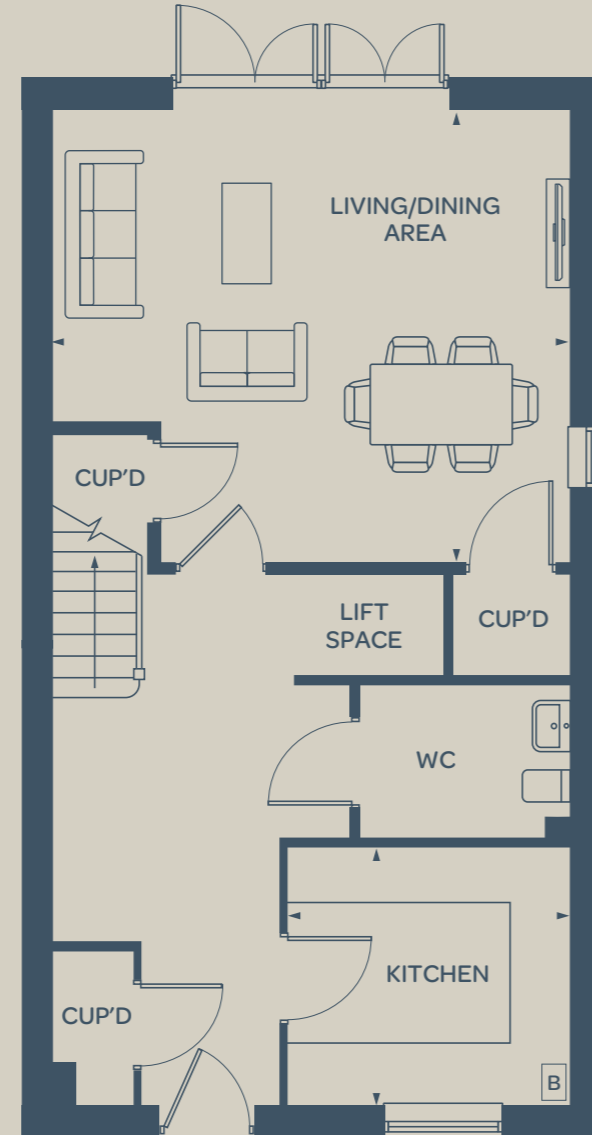
LIVING/DINING AREA
5.64m x 4.94m 18' 7" x 16' 2"

First Floor

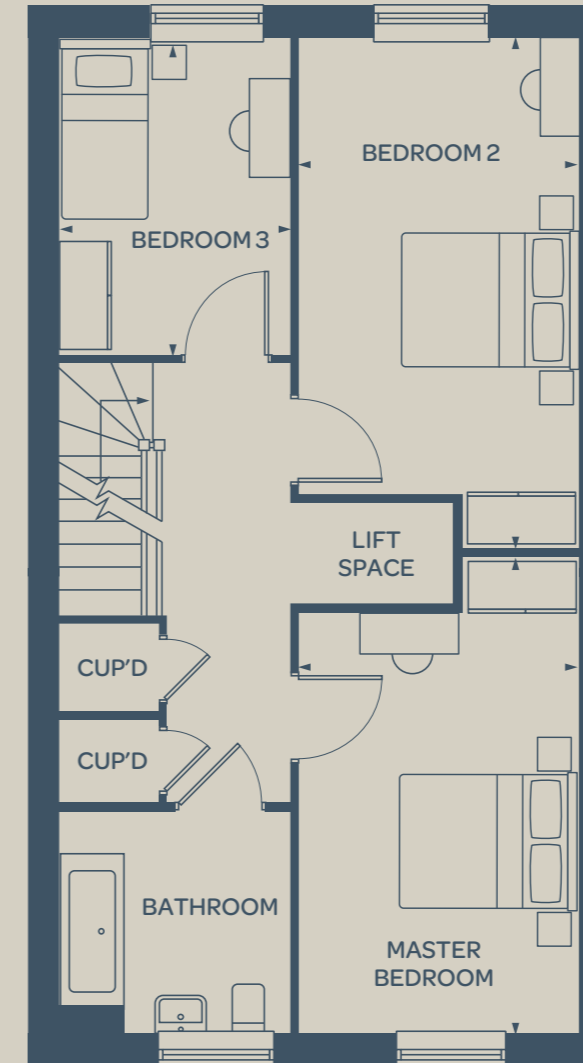
MASTER BEDROOM
5.23m x 3.03m 17' 2" x 10' 0"

BEDROOM 2
5.58m x 3.03m 18' 4" x 10' 0"

BEDROOM 3
3.45m x 2.51m 11' 4" x 8' 3"



Ground Floor



First Floor

B = Boiler (location is indicative)

The floorplan has been produced for illustrative purposes only. Room sizes shown are between arrow points as indicated on plan. The dimensions have tolerances of + or -50mm and should not be used other than for general guidance. If specific dimensions are required, enquiries should be made to the sales consultant. The floor plans shown are not to scale. Measurements are based on the original drawings. Slight variations may occur during construction. Kitchen and bathroom layouts shown and furniture positions are indicative only.

The illustrations shown are computer generated impressions of how the property may look and are indicative only. External details or finishes may vary on individual plots and homes may be built in either detached or attached styles depending on the development layout. Exact specifications, window styles and whether a property is left or right handed may differ from plot to plot. Please speak to our sales consultant for specific plot details.

