



Computer generated image of The Laurel V plot 6

# The Laurel V

Plots 6, 8 & 11

*3 bedroom, 2 storey house*

The heart of the Laurel V is set to be the flexible open plan living space to the ground floor, which features a bright and airy ambience, and space for the whole family to come together. The master bedroom upstairs is afforded a sense of privacy thanks to its own en suite bathroom.



COUNTRYSIDE AT



# The Laurel V

Plots 6, 8 & 11\*

Total internal area: 92.9 sq m / 999.97 sq ft

## Ground Floor

**KITCHEN**  
4.03m x 2.94m 13' 3" x 9' 8"

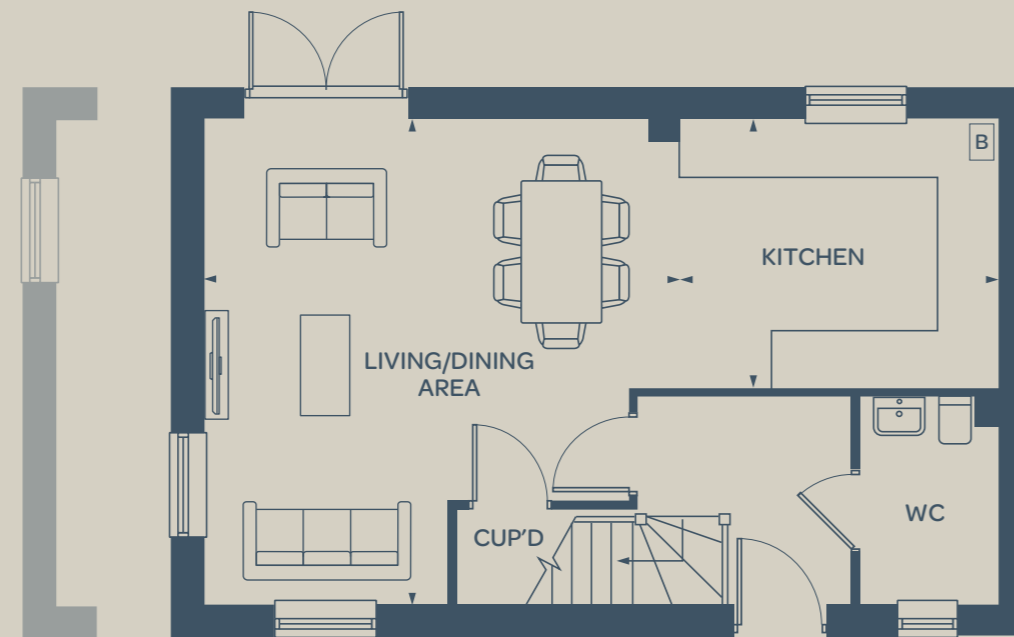
**LIVING/DINING AREA**  
5.31m x 4.65m 17' 5" x 15' 3"

## First Floor

**MASTER BEDROOM**  
4.18m x 4.17m 13' 9" x 13' 8"

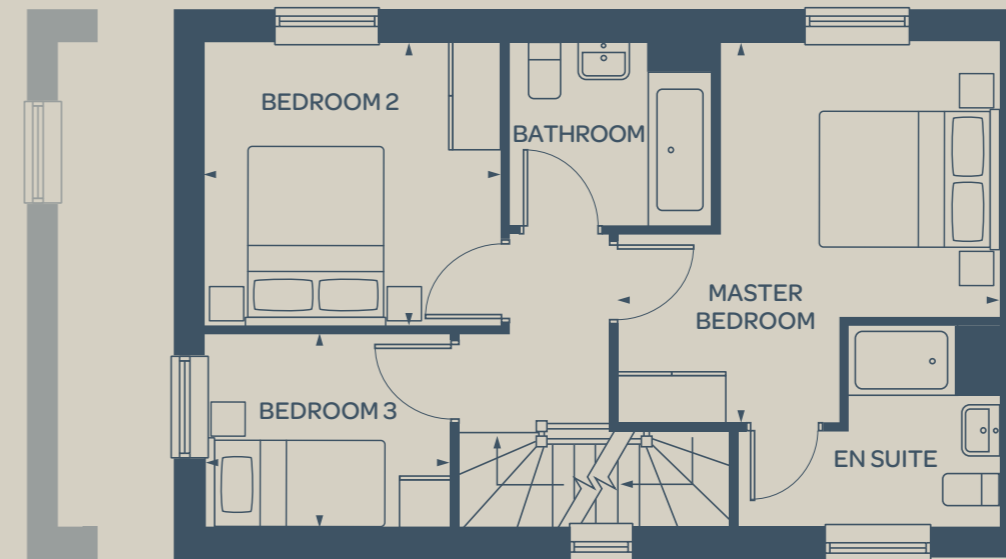
**BEDROOM 2**  
3.23m x 3.12m 10' 7" x 10' 3"

**BEDROOM 3**  
2.67m x 2.10m 8' 9" x 6' 11"



Window variation to plot 11

Ground Floor



Window variation to plot 11

First Floor



Window variation to plot 11



\* Handed plot B = Boiler (location is indicative)

The floorplan has been produced for illustrative purposes only. Room sizes shown are between arrow points as indicated on plan. The dimensions have tolerances of + or -50mm and should not be used other than for general guidance. If specific dimensions are required, enquiries should be made to the sales consultant. The floor plans shown are not to scale. Measurements are based on the original drawings. Slight variations may occur during construction. Kitchen and bathroom layouts shown and furniture positions are indicative only.

The illustrations shown are computer generated impressions of how the property may look and are indicative only. External details or finishes may vary on individual plots and homes may be built in either detached or attached styles depending on the development layout. Exact specifications, window styles and whether a property is left or right handed may differ from plot to plot. Please speak to our sales consultant for specific plot details.