



Computer generated image of The Laurel plots 1 & 2

The Laurel

Plots 1, 2, 9, 10, 14, 15, 24 & 25
3 bedroom, 2 storey house

The Laurel is a delightful family home, whose downstairs offers you a flowing open plan living space from the kitchen at the front to the living/dining area at the rear. This continues out through the double doors to the garden beyond. To the first floor, bedroom 3 could be converted into a stylish home office or children's playroom, depending on your needs.



COUNTRYSIDE AT



The Laurel

Plots 1, 2, 9, 10*, 14, 15, 24 & 25

Total internal area: 93.2 sq m / 1003 sq ft

Ground Floor

KITCHEN
4.17m x 2.24m 13' 8" x 7' 4"

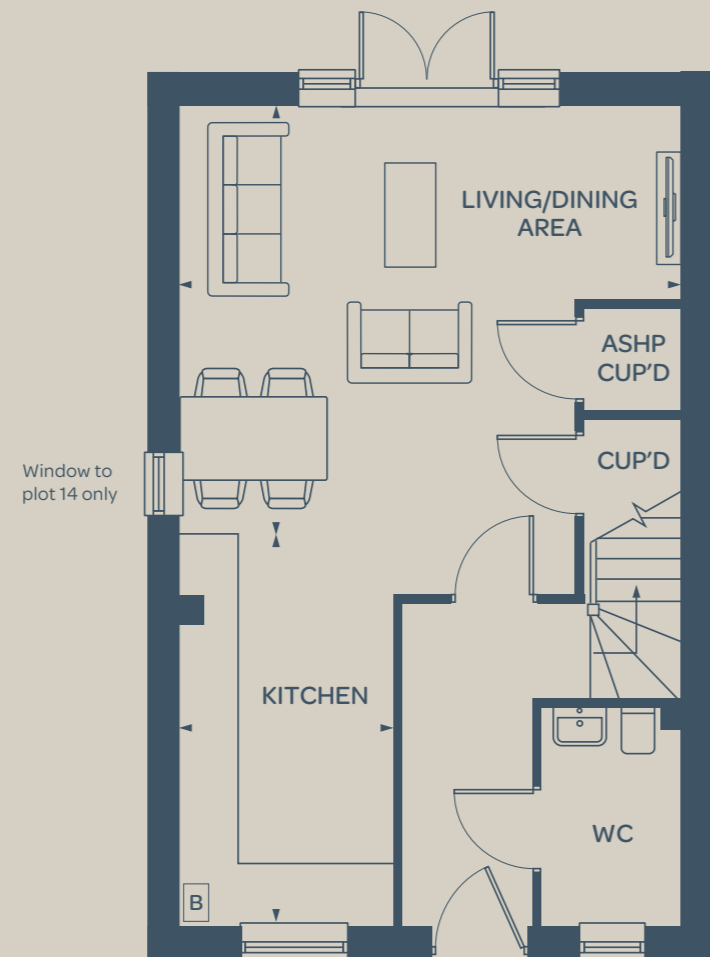
LIVING/DINING AREA
5.31m x 4.51m 17' 5" x 14' 9"

First Floor

MASTER BEDROOM
4.17m x 3.58m 13' 8" x 11' 9"

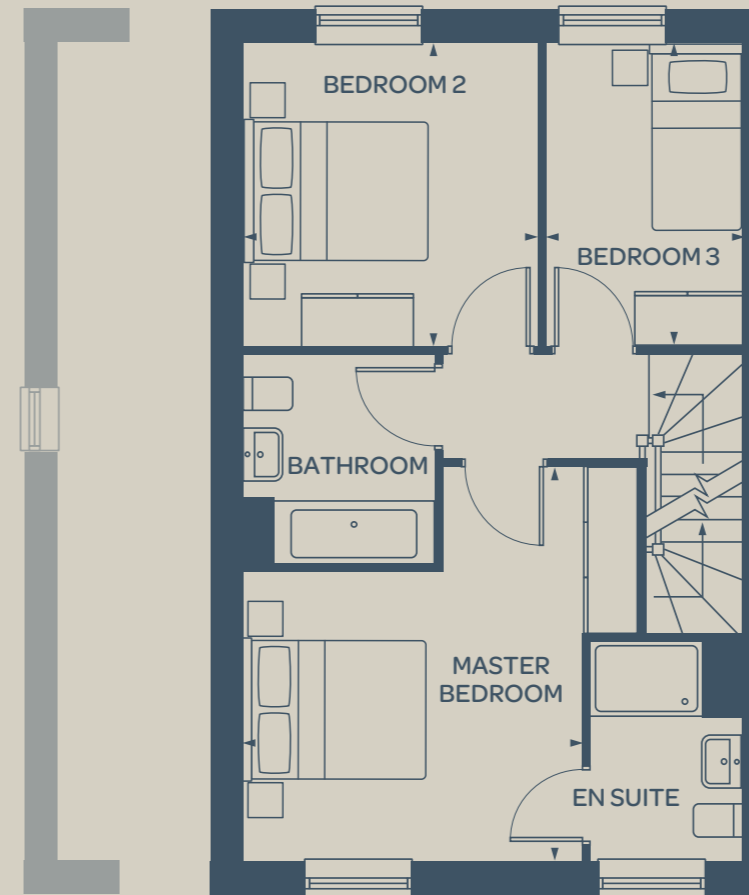
BEDROOM 2
3.21m x 3.11m 10' 7" x 10' 3"

BEDROOM 3
3.21m x 2.10m 10' 7" x 6' 11"



Air source heat pump cupboard omitted to plots 2, 9, 10, 14, 15 & 24

Ground Floor



Window variation to plot 1

First Floor

Window variation to plots 2, 9, 15 & 25



* Handed plot B = Boiler (location is indicative)

The floorplan has been produced for illustrative purposes only. Room sizes shown are between arrow points as indicated on plan. The dimensions have tolerances of + or -50mm and should not be used other than for general guidance. If specific dimensions are required, enquiries should be made to the sales consultant. The floor plans shown are not to scale. Measurements are based on the original drawings. Slight variations may occur during construction. Kitchen and bathroom layouts shown and furniture positions are indicative only.

The illustrations shown are computer generated impressions of how the property may look and are indicative only. External details or finishes may vary on individual plots and homes may be built in either detached or attached styles depending on the development layout. Exact specifications, window styles and whether a property is left or right handed may differ from plot to plot. Please speak to our sales consultant for specific plot details.