

BASE3

basenewhall.co.uk



Computer generated image of The Silva, plots 304 & 305

THE SILVA

Plots 304-306 & 325-327

3 bedroom, 2 storey house

A welcoming three bedroom home offering a modern open plan living space with double doors leading onto the garden. Upstairs, the master bedroom benefits from en suite facilities, affording you a sense of privacy.

newhall

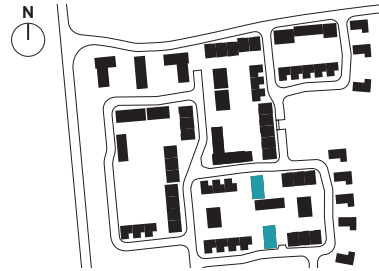


newhall



Plots 304, 305, 306, 325*, 326* & 327*

TOTAL INTERNAL AREA 85 sq.m 917 sq.ft



GROUND FLOOR

KITCHEN
3.40m x 2.52m 11' 2" x 8' 3"

LIVING/DINING AREA
5.02m x 4.99m 16' 6" x 16' 5"

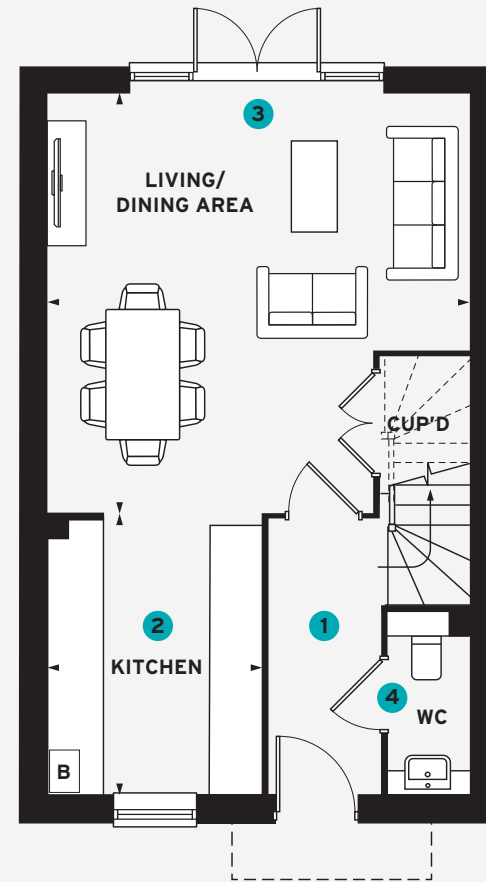
FIRST FLOOR

MASTER BEDROOM
3.29m x 2.96m 10' 10" x 9' 9"

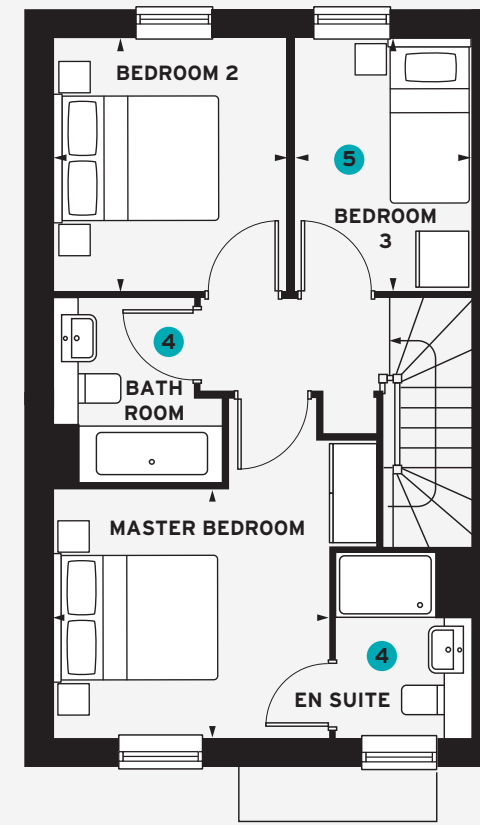
BEDROOM 2
3.04m x 2.80m 10' 0" x 9' 2"

BEDROOM 3
3.04m x 2.13m 10' 0" x 7' 0"

- 1 An elegant entrance hall greets you as you enter the home
- 2 The galley-style kitchen is perfect for cooking up a storm
- 3 The double doors can be thrown open in the summer months
- 4 Two bathrooms and a separate WC give you the utmost in convenience
- 5 Bedroom 3 could become a play room or home office



GROUND FLOOR



FIRST FLOOR

* Handed plot B = Boiler (location is indicative)
All room sizes are approximate with maximum dimensions which have been taken into the kitchen units and are not intended for carpet sizes or items of furniture.
All dimensions and areas listed are to finished measurements. Countryside operates a policy of continuous product development and all room layouts may be subject to minor modifications. Kitchen, bathroom and furniture layouts shown are indicative only. Computer generated images are indicative only and can be subject to change. Images are often shown from an imaginary open space area and variations to the external design and landscaping may occur. Please ask Sales Consultants for detailed information regarding specific properties. August 2022.