

# BASE3

[basenewhall.co.uk](http://basenewhall.co.uk)



Computer generated image of The Nova Apartments

## THE NOVA APARTMENTS

Plots 272-283

1 & 2 bedroom

With a mixture of one and two bedroom apartments, the Nova collection is nestled in the heart of Base 3, close to green areas and convenient amenities. Each home boasts generous open plan living space, while the master bedrooms in the larger apartments have their own en-suite bathrooms. All are finished to the excellent standards you would expect from Countryside.



**COUNTRYSIDE**  
Places People Love

newhall

newhall



**COUNTRYSIDE**  
Places People Love

# Plots 272, 273\*, 274, 275\*, 276 & 277\*

1 bedroom

**TOTAL INTERNAL AREA** 54 sq.m 584 sq.ft

<b>KITCHEN</b>	3.31m x 1.85m	10' 10" x 6' 1"
<b>LIVING/DINING AREA</b>	5.42m x 3.25m	17' 10" x 10' 8"
<b>BEDROOM</b>	4.12m x 3.49m	13' 7" x 11' 6"

# Plots 278, 279\*, 280, 281\*, 282 & 283\*

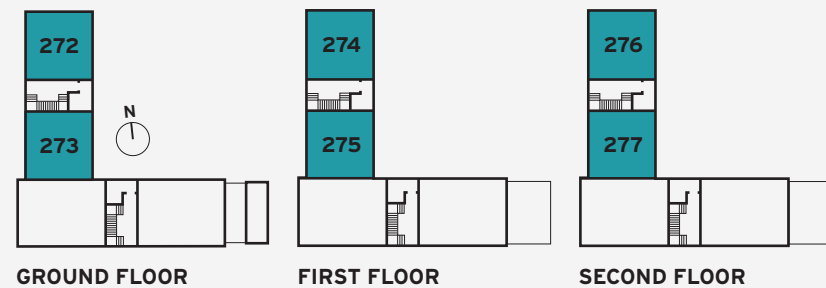
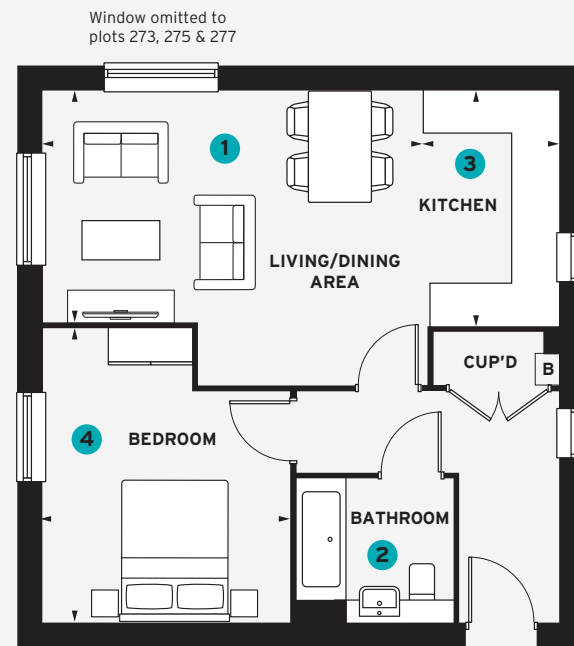
2 bedroom

**TOTAL INTERNAL AREA** 70 sq.m 757 sq.ft

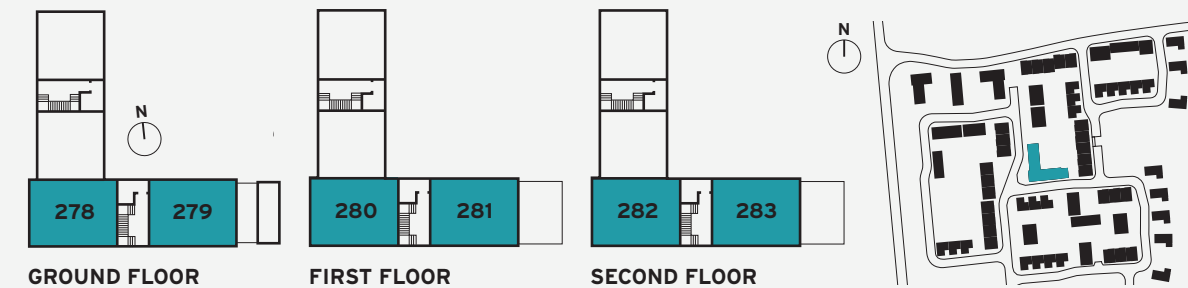
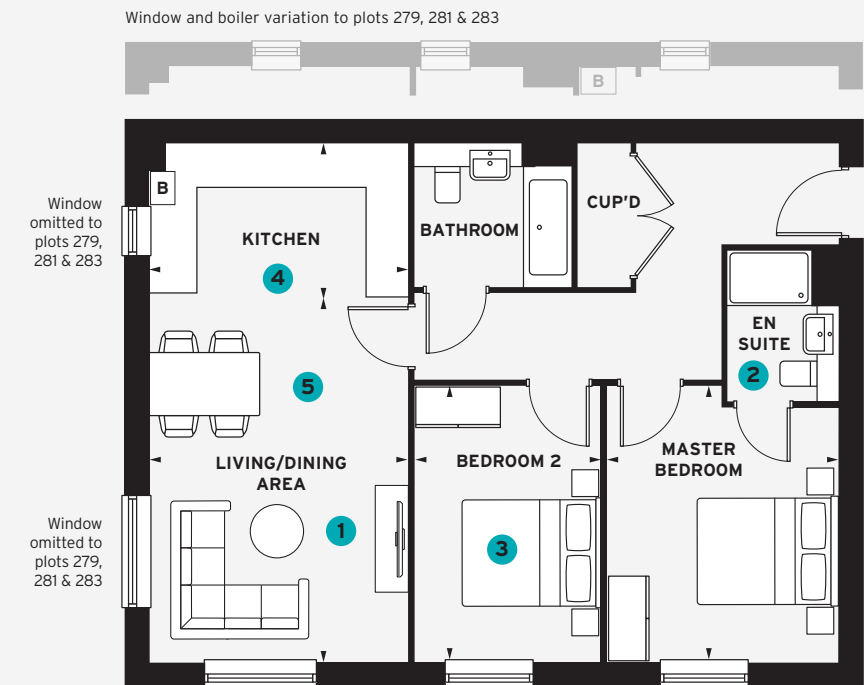
<b>KITCHEN</b>	3.63m x 2.16m	11' 11" x 7' 1"
	3.63m x 1.89m •	11' 11" x 6' 3" •
<b>LIVING/DINING AREA</b>	5.10m x 3.63m	16' 9" x 11' 11"
	5.37m x 3.63m •	17' 8" x 11' 11" •
<b>MASTER BEDROOM</b>	3.89m x 3.24m	12' 9" x 10' 8"
<b>BEDROOM 2</b>	3.89m x 2.62m	12' 9" x 8' 8"
	3.89m x 2.62m •	12' 9" x 8' 7" •

• Plot 279, 281 & 283 variation

- 1 The heart of the home, this open plan living accommodation enjoys real flexibility
- 2 The bathroom benefits from sleek white sanitaryware and chrome accessories
- 3 Workspace is in abundance in the kitchen
- 4 The bedroom is a cosy sanctuary in which to relax



- 1 The living area is wonderfully bright and airy
- 2 An en suite bathroom to the master bedroom means there'll never be a queue in the morning
- 3 Bedroom two is a generous double with room for a wardrobe
- 4 The kitchen offers ample workspace
- 5 You'll love having guests over for dinner



\* Handed plot B = Boiler (location is indicative)  
 All room sizes are approximate with maximum dimensions which have been taken into the kitchen units and are not intended for carpet sizes or items of furniture.  
 All dimensions and areas listed are to finished measurements. Countryside operates a policy of continuous product development and all room layouts may be subject to minor modifications. Kitchen, bathroom and furniture layouts shown are indicative only. Computer generated images are indicative only and can be subject to change. Images are often shown from an imaginary open space area and variations to the external design and landscaping may occur. Please ask Sales Consultants for detailed information regarding specific properties. August 2022.