

Plot 252

1 bedroom

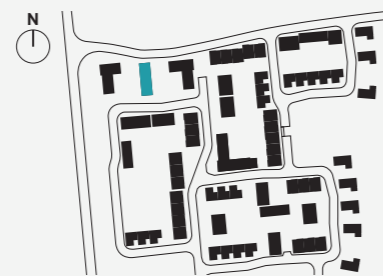
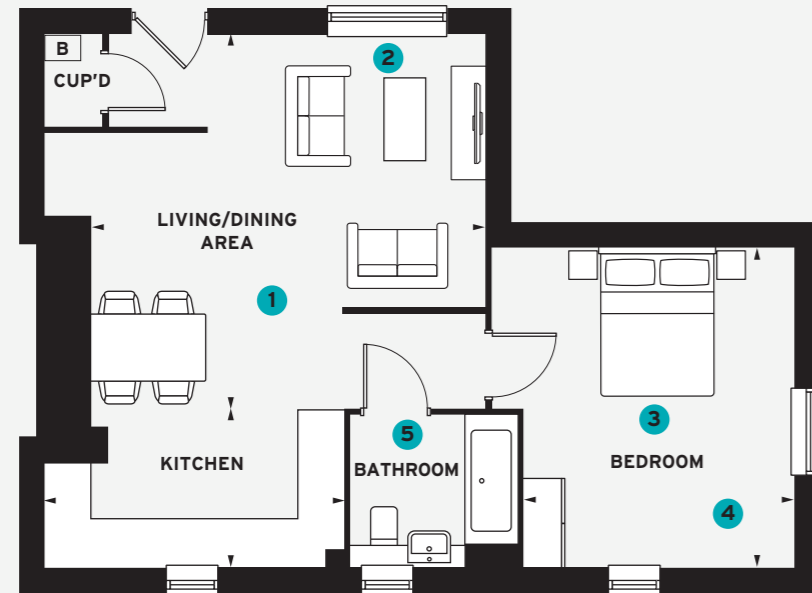
TOTAL INTERNAL AREA 56 sq.m 608 sq.ft

KITCHEN
3.95m x 2.09m 13' 0" x 6' 10"

LIVING/DINING AREA
5.21m x 4.95m 17' 2" x 16' 3"

BEDROOM
4.22m x 3.75m 13' 10" x 11' 9"

- 1 The open plan living space has distinct areas
- 2 A large feature window brings natural light into the living space
- 3 A desk could be added to the bedroom for home working
- 4 The bedroom's double aspect makes it bright and airy
- 5 The bathroom is centrally located for convenience



GROUND FLOOR

B = Boiler (location is indicative)
 All room sizes are approximate with maximum dimensions which have been taken into the kitchen units and are not intended for carpet sizes or items of furniture.
 All dimensions and areas listed are to finished measurements. Countryside operates a policy of continuous product development and all room layouts may be subject to minor modifications. Kitchen, bathroom and furniture layouts shown are indicative only. Computer generated images are indicative only and can be subject to change. Images are often shown from an imaginary open space area and variations to the external design and landscaping may occur. Please ask Sales Consultants for detailed information regarding specific properties. August 2022.

basenewhall.co.uk

BASE3



Computer generated image of The Locus Apartments

THE LOCUS APARTMENTS

Plots 251-256

1 & 2 bedroom

Tucked away in the corner of this latest phase, the Locus apartments are ideal for first time buyers or downsizers looking for a manageable home. The living accommodation is open plan with lots of natural light, making it the perfect environment in which to entertain guests or relax. The bedrooms are generously sized and offer a calming backdrop for a good night's rest.

newhall


COUNTRYSIDE
 Places People Love

newhall


COUNTRYSIDE
 Places People Love

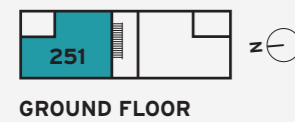
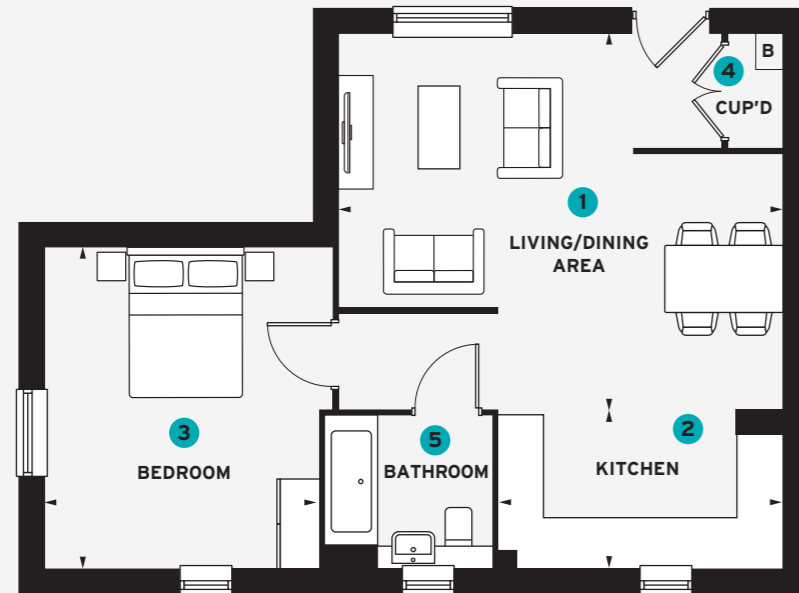
Plot 251

1 bedroom

TOTAL INTERNAL AREA 57 sq.m 622 sq.ft

KITCHEN	3.75m x 2.09m	12' 4" x 6' 10"
LIVING/DINING AREA	5.84m x 4.95m	19' 2" x 16' 3"
BEDROOM	4.22m x 3.60m	13' 10" x 11' 10"

- 1 You have ample room to socialise with guests
- 2 You'll find the kitchen is well appointed with everything at hand
- 3 The bedroom is dual aspect, making it bright and airy
- 4 A storage cupboard is provided for your convenience
- 5 Elegantly finished, this bathroom is a welcoming setting



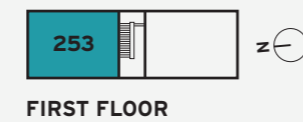
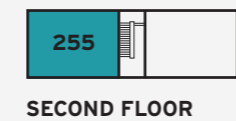
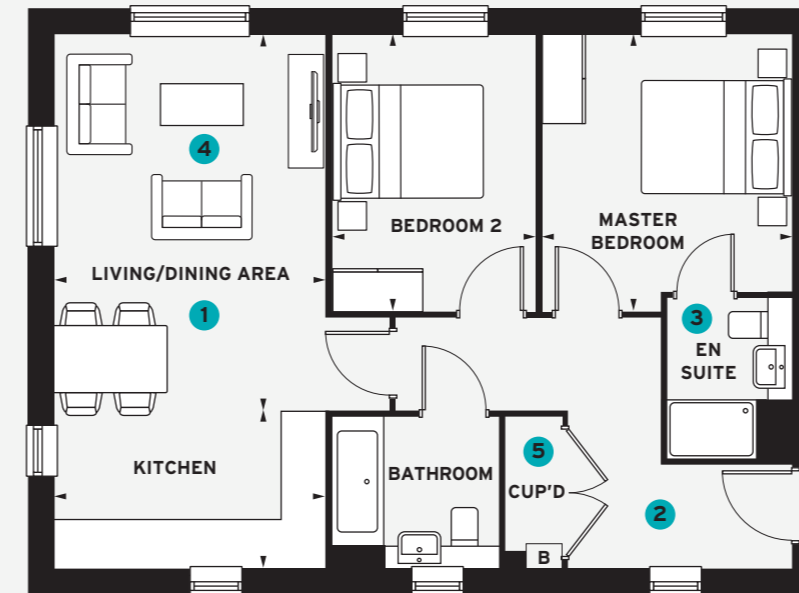
Plots 253 & 255

2 bedroom

TOTAL INTERNAL AREA 68 sq.m 737 sq.ft

KITCHEN	3.57m x 2.09m	11' 9" x 6' 10"
LIVING/DINING AREA	4.95m x 3.57m	16' 3" x 11' 9"
MASTER BEDROOM	3.65m x 3.29m	12' 0" x 10' 10"
BEDROOM 2	3.65m x 2.70m	12' 0" x 8' 10"

- 1 The open plan living area will be the heart of the home
- 2 A spacious entry hall greets you upon arrival
- 3 A chic en suite completes the master bedroom
- 4 There is lots of natural light flooding the living space
- 5 A built-in cupboard is handy for storage



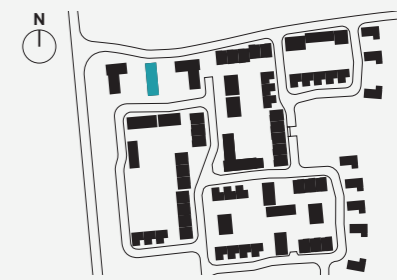
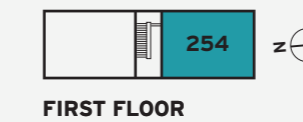
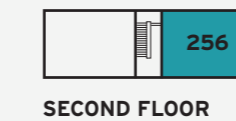
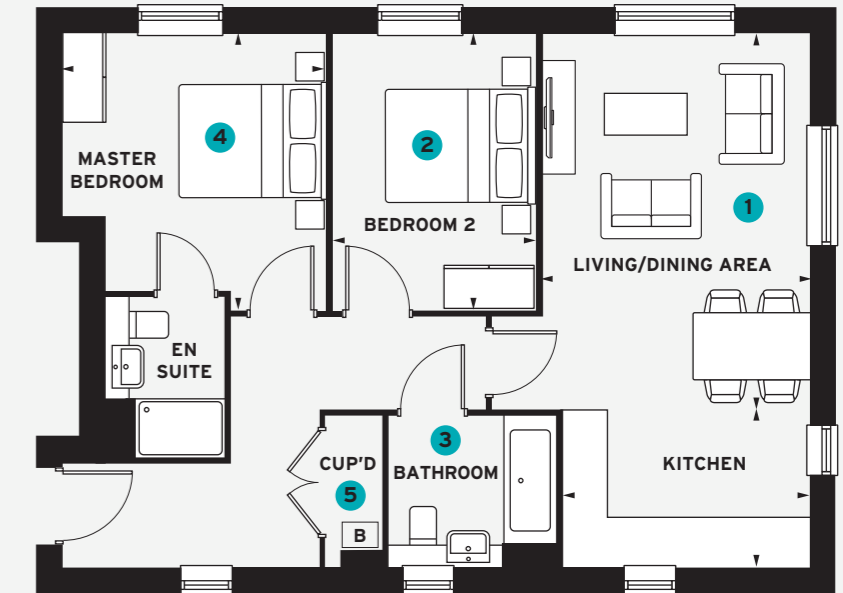
Plots 254 & 256

2 bedroom

TOTAL INTERNAL AREA 67 sq.m 730 sq.ft

KITCHEN	3.26m x 2.09m	10' 8" x 6' 10"
LIVING/DINING AREA	4.95m x 3.52m	16' 3" x 11' 7"
MASTER BEDROOM	3.65m x 3.51m	12' 0" x 11' 6"
BEDROOM 2	3.65m x 2.70m	12' 0" x 8' 10"

- 1 A pleasing ambience is created thanks to natural light in the living space
- 2 Bedroom 2 could easily become your stylish home office
- 3 Everything you need is close at hand in this modern bathroom
- 4 The master bedroom is well proportioned with en suite facilities
- 5 The storage cupboard allows you to tuck away household essentials



B = Boiler (location is indicative)
 All room sizes are approximate with maximum dimensions which have been taken into the kitchen units and are not intended for carpet sizes or items of furniture.
 All dimensions and areas listed are to finished measurements. Countryside operates a policy of continuous product development and all room layouts may be subject to minor modifications. Kitchen, bathroom and furniture layouts shown are indicative only. Computer generated images are indicative only and can be subject to change. Images are often shown from an imaginary open space area and variations to the external design and landscaping may occur. Please ask Sales Consultants for detailed information regarding specific properties. August 2022.