

# BASE3

[basenewhall.co.uk](http://basenewhall.co.uk)



Computer generated image of The Atticus, plots 349-351

## THE ATTICUS

Plots 266-271, 297-299, 310-312, 349-351, 354 & 355

3 bedroom, 3 storey house

A beautiful three bedroom home set over three generously-sized floors. Downstairs is likely to be the heart of the home, where family and friends can come together in the open plan living area which opens out to the rear garden. The lavish master suite has a pleasing spot for a window seat to look over the development beyond.



**COUNTRYSIDE**  
Places People Love

new**hall**

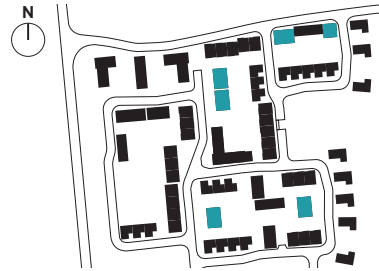
new**hall**



**COUNTRYSIDE**  
Places People Love

Plots 266, 267, 268, 269\*, 270\*,  
271\*, 297\*, 298\*, 299\*, 310, 311, 312,  
349\*, 350\*, 351\*, 354 & 355

**TOTAL INTERNAL AREA** 114 sq.m 1234 sq.ft



**GROUND FLOOR**

**KITCHEN**  
3.78m x 1.94m 12' 5" x 6' 5"

**LIVING/DINING AREA**  
5.62m x 4.46m 18' 5" x 14' 8"

**FIRST FLOOR**

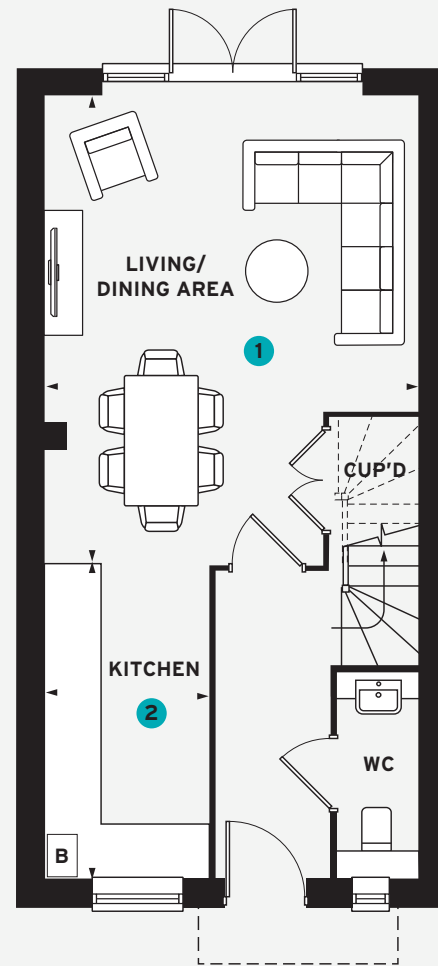
**BEDROOM 2**  
4.46m x 2.82m 14' 8" x 9' 3"

**BEDROOM 3**  
3.41m x 2.48m 11' 3" x 8' 2"

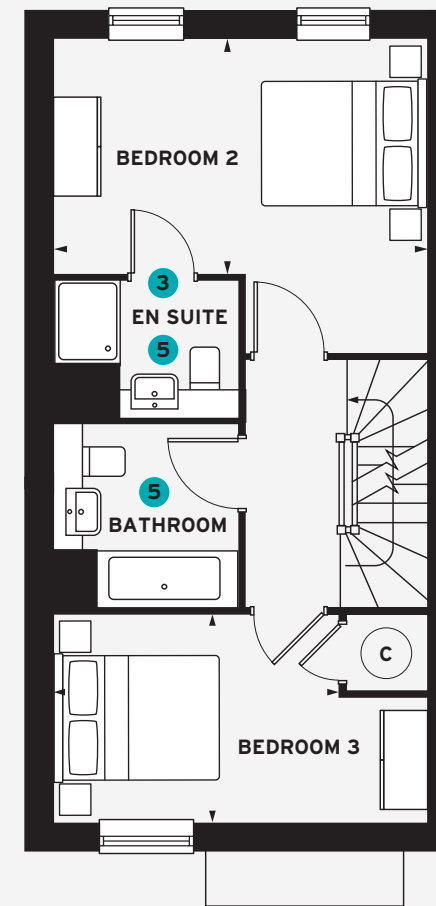
**SECOND FLOOR**

**MASTER BEDROOM**  
3.60m x 3.30m 11' 10" x 10' 10"

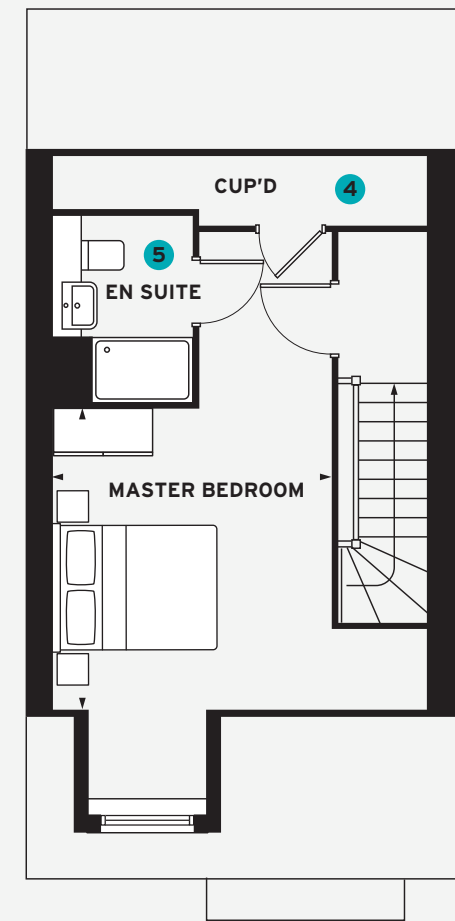
- 1 You're sure to enjoy hosting get-togethers in your open plan living area
- 2 The kitchen offers an abundance of workspace
- 3 Bedroom 2 benefits from its own en suite bathroom
- 4 The master suite has plentiful under-eaves storage
- 5 All bathrooms come with chic white sanitaryware



**GROUND FLOOR**



**FIRST FLOOR**



**SECOND FLOOR**

\* Handed plot C = Hot Water Cylinder B = Boiler (location is indicative)  
All room sizes are approximate with maximum dimensions which have been taken into the kitchen units and are not intended for carpet sizes or items of furniture.  
All dimensions and areas listed are to finished measurements. Countryside operates a policy of continuous product development and all room layouts may be subject to minor modifications. Kitchen, bathroom and furniture layouts shown are indicative only and can be subject to change.  
Images are often shown from an imaginary open space area and variations to the external design and landscaping may occur. Please ask Sales Consultants for detailed information regarding specific properties. August 2022.